



आईएफटीएम विश्वविद्यालय, मुरादाबाद, उत्तर प्रदेश
IFTM University, Moradabad, Uttar Pradesh
NAAC ACCREDITED

STUDENT FEEDBACK REPORT
SCHOOL OF COMPUTER SCIENCE AND APPLICATIONS
2022-23

SECTION – FACILITIES



RESEARCH METHODOLOGY

Data Type:	Primary
Data Collection Tool:	Survey (Online)
Sample Size:	277
Sample Frame:	Students of IFTM University studying in 2022-23 in School of Computer Science and Applications
Sampling:	Probability
Questionnaire:	5-point Likert scale (with 5 being most satisfied and 1 being least satisfied)



In its pursuit of excellence, IQAC at IFTM University conducts a student survey every year; to learn about any scope of improvement in its functioning.

The student responses are sought in the following 5 areas viz.

1. Library
2. Institutional Facilities
3. Examination & Evaluation
4. Placement Cell
5. Student Support

Performance in these areas gets measured through responses given to specific questions (factors) in the questionnaire (Student Survey). In 2022-23, 1984 students participated in the survey. Out of these, 277 were from School of Computer Science & Applications. The findings of the survey on the above mentioned 5 areas are presented in the following section.



LIBRARY

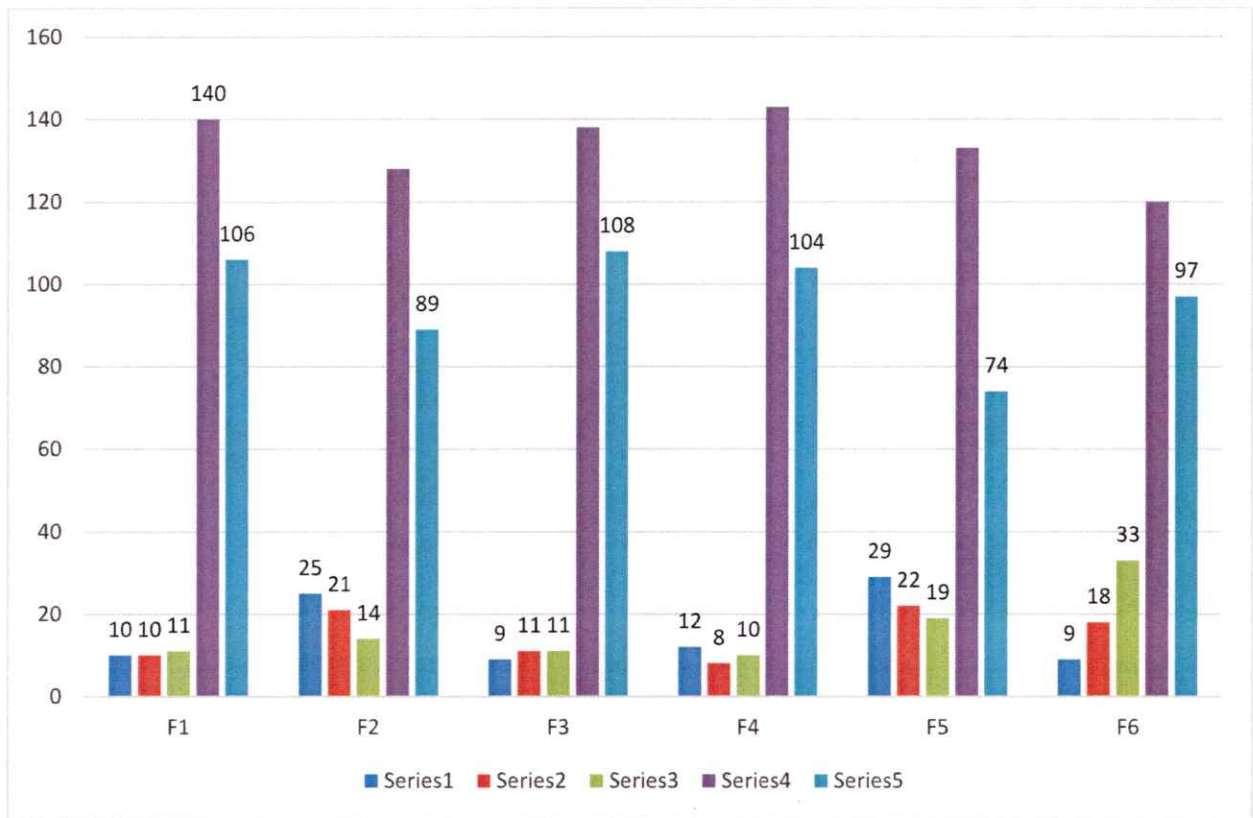
Library is the epicenter of knowledge in any academic institute. It provides its users place to brain storm and learn. The effectiveness of library facility was measured through the following factors.

1. F1: The prescribed books/reading materials are available in the library.
2. F2: Reading room and common room are available in the faculty/college building
3. F3: Available reading space in library is satisfactory
4. F4: The library staff are cooperative and helpful
5. F5: Photocopying facility in the library/Department is available and satisfactory
6. F6: Online educational resources are available and accessible

18% respondents felt that reprography services in library need improvement. The survey also revealed that 17% of the respondents expressed the need of a separate reading room in the department.

LIBRARY							
Ratings	F1	F2	F3	F4	F5	F6	Cumulative Rating
1	10	25	9	12	29	9	4
2	10	21	11	8	22	18	
3	11	14	11	10	19	33	
4	140	128	138	143	133	120	
5	106	89	108	104	74	97	
Average Rating	4	4	4	4	4	4	
No. of Participants in the survey	277	277	277	277	277	277	
% of students satisfied	93	83	93	93	82	90	
% of students dissatisfied	7	17	7	7	18	10	





INSTITUTIONAL FACILITIES

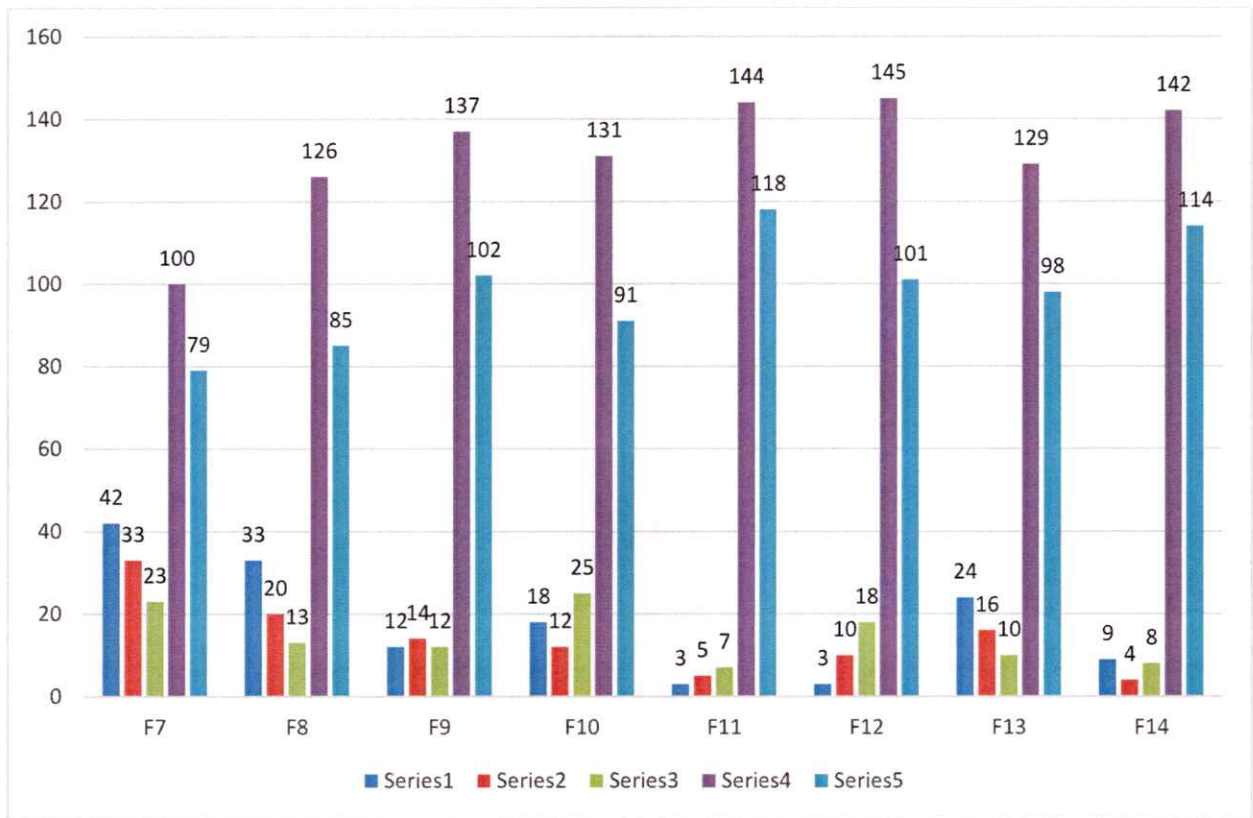
The institutional facilities provide students an environment conducive to learning and help them realize their true potential. The performance on this parameter was measured through various factors viz.

1. F7: Internet facilities are available in the department
2. F8: Toilets/washrooms are hygienic and properly maintained.
3. F9: Clean drinking water is available in the department and on the campus
4. F10: Equipment in the lab(s) is in working condition.
5. F11: The campus is green and Eco friendly
6. F12: The buildings/classrooms are accessible to differently abled persons.
7. F13: The classrooms are clean and well maintained
8. F14: The campus has adequate power supply.

Out of 277 respondents, 27% of the respondents viewed internet connectivity at their respective departments as not satisfactory. 19% of the respondents also felt that more cleanliness and hygiene is required to be maintained in the wash rooms. 14% students said that the classroom infrastructure needs to be improved and fixed.

INSTITUTIONAL FACILITIES									
Ratings	F7	F8	F9	F10	F11	F12	F13	F14	Cumulative Rating
1	42	33	12	18	3	3	24	9	4
2	33	20	14	12	5	10	16	4	
3	23	13	12	25	7	18	10	8	
4	100	126	137	131	144	145	129	142	
5	79	85	102	91	118	101	98	114	
Average Rating	4	4	4	4	4	4	4	4	
No. of Participants in the survey	277	277	277	277	277	277	277	277	
% of students satisfied	73	81	91	89	97	95	86	95	
% of students dissatisfied	27	19	9	11	3	5	14	5	





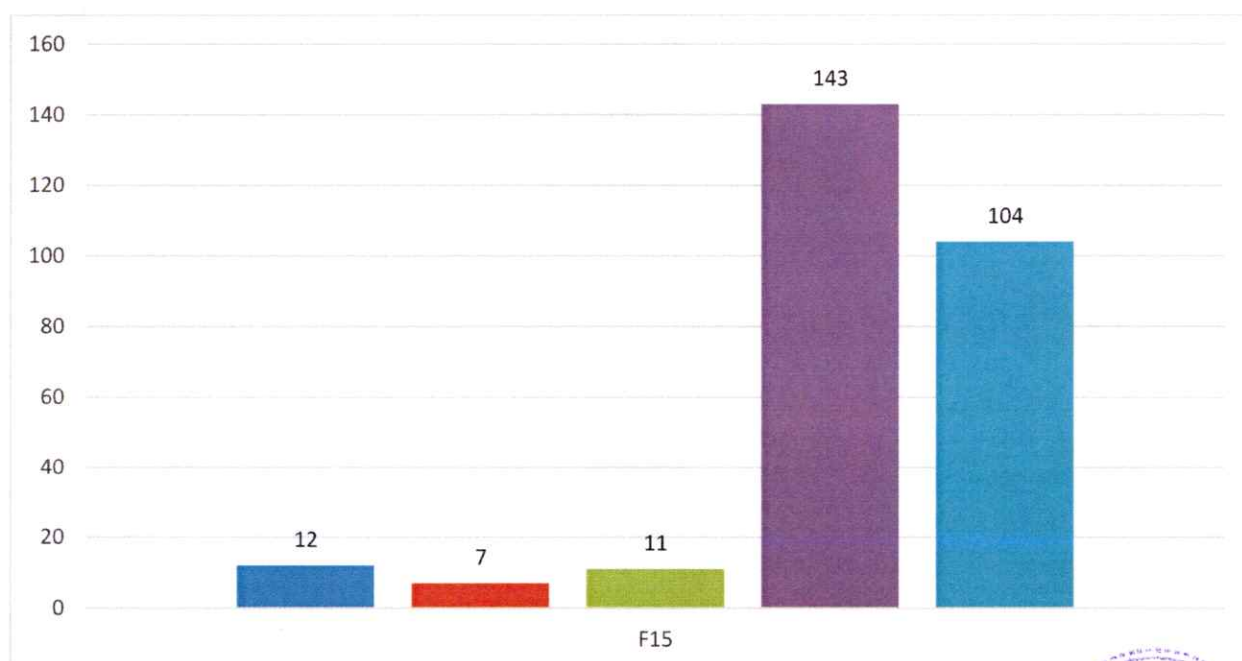
EXAMINATION & EVALUATION

Examination and its evaluation were measured with the help of following factor.

1. F15: Results and attendance records are displayed on time

93% of the respondents agreed that the results and attendance records are displayed on time. The average rating for this factor was 4.

EXAMINATION & EVALUATION		
Ratings	F15	Cumulative Rating
1	12	4
2	7	
3	11	
4	143	
5	104	
Average Rating	4	
No. of Participants in the survey	277	
% of students satisfied	93	
% of students dissatisfied	7	

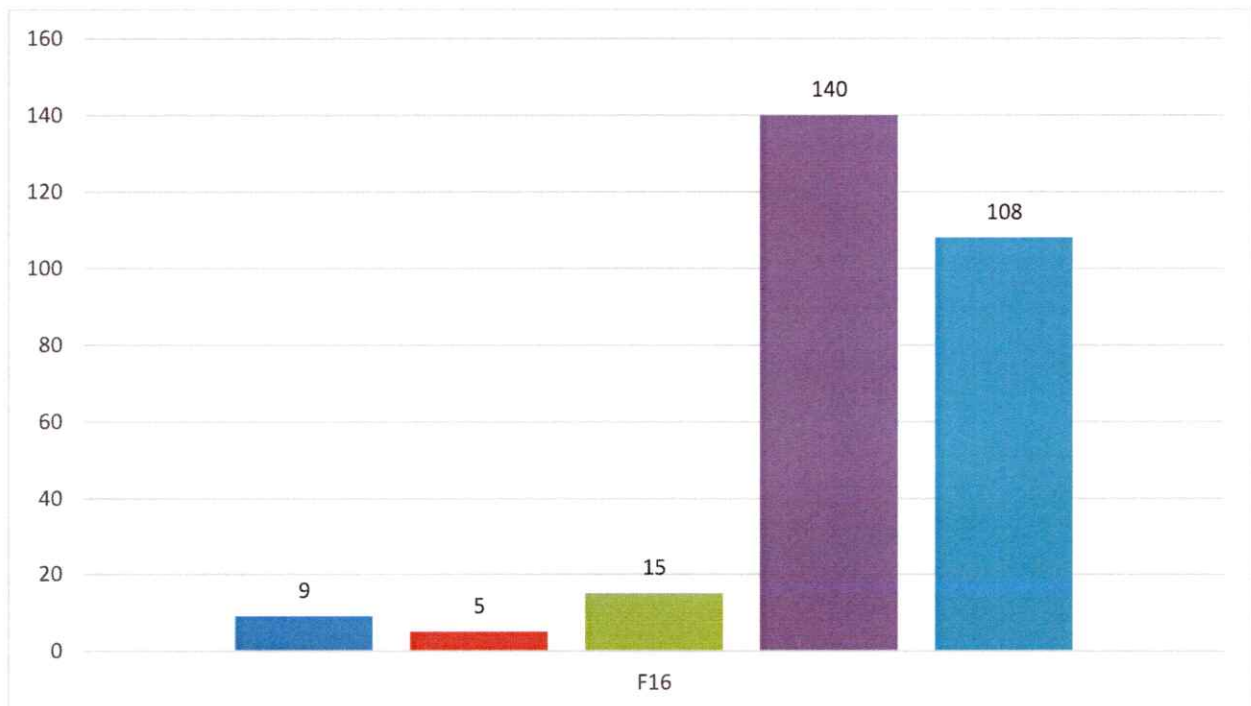


PLACEMENT CELL

The performance of placement cell and its functioning was found satisfactory by 95% of the respondents. The average rating being given to the university on this parameter was 4. Student's perception and experience with the placement cell was sought.

1. F16: The functioning of the placement cell(s) in the university/department is satisfactory.

PLACEMENT CELL		
Ratings	F16	Cumulative Rating
1	9	4
2	5	
3	15	
4	140	
5	108	
Average Rating	4	
No. of Participants in the survey	277	
% of students satisfied	95	
% of students dissatisfied	5	



STUDENT SUPPORT

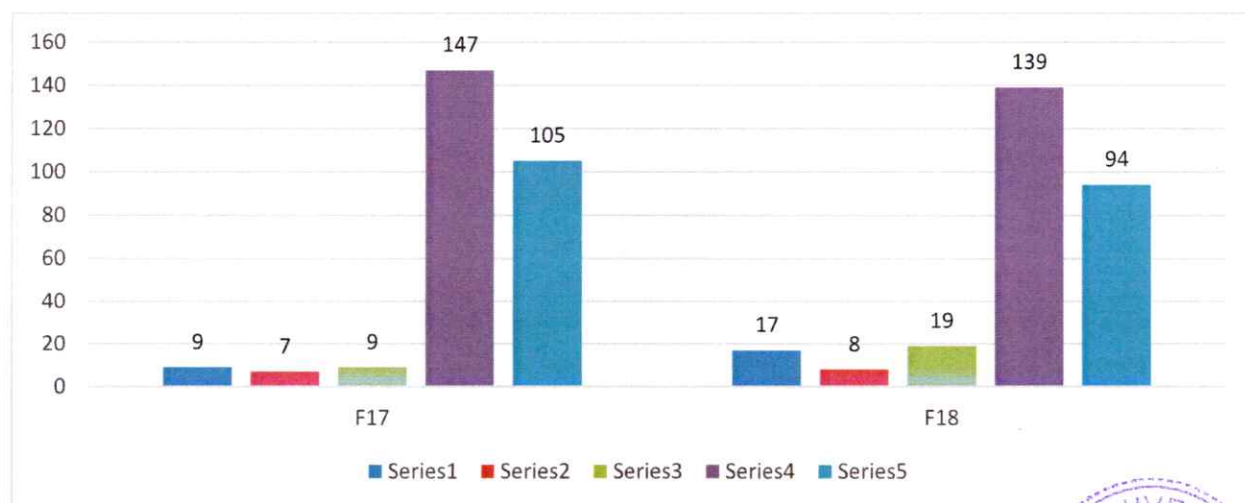
Though university aims to facilitate its students proactively, it may happen that students have some grievances and suggestions. To get their concerns addressed, they may require meeting functionaries across departments.

To measure performance in this area, responses were sought on the following factors –

1. F17: The office staff in the department is helpful.
2. F18: Grievances/problems are redressed/ solved well in time.

94% of the respondents found their interaction with office staff as helpful. However, about 9% of the respondents shared those grievances and problems needs to be solved more efficiently and effectively.

STUDENT SUPPORT			
Ratings	F17	F18	Cumulative Rating
1	9	17	4
2	7	8	
3	9	19	
4	147	139	
5	105	94	
Average Rating	4	4	
No. of Participants in the survey	277	277	
% of students satisfied	94	91	
% of students dissatisfied	6	9	



SECTION – TEACHING & EVALUATION



RESEARCH METHODOLOGY

Data Type:	Primary
Data Collection Tool:	Survey (Online)
Sample Size:	310
Sample Frame:	Students of IFTM University studying in 2022-23 in School of Computer Science & Applications
Sampling:	Probability
Questionnaire:	5-point Likert scale (with 5 being most satisfied and 1 being least satisfied)



Teaching and evaluation of students are at the core of any academic institute. It helps in bringing the desired change in the students and helps them contribute in making society a better place. To learn about the performance in these two areas, a questionnaire was prepared and administered through a survey.

TEACHING

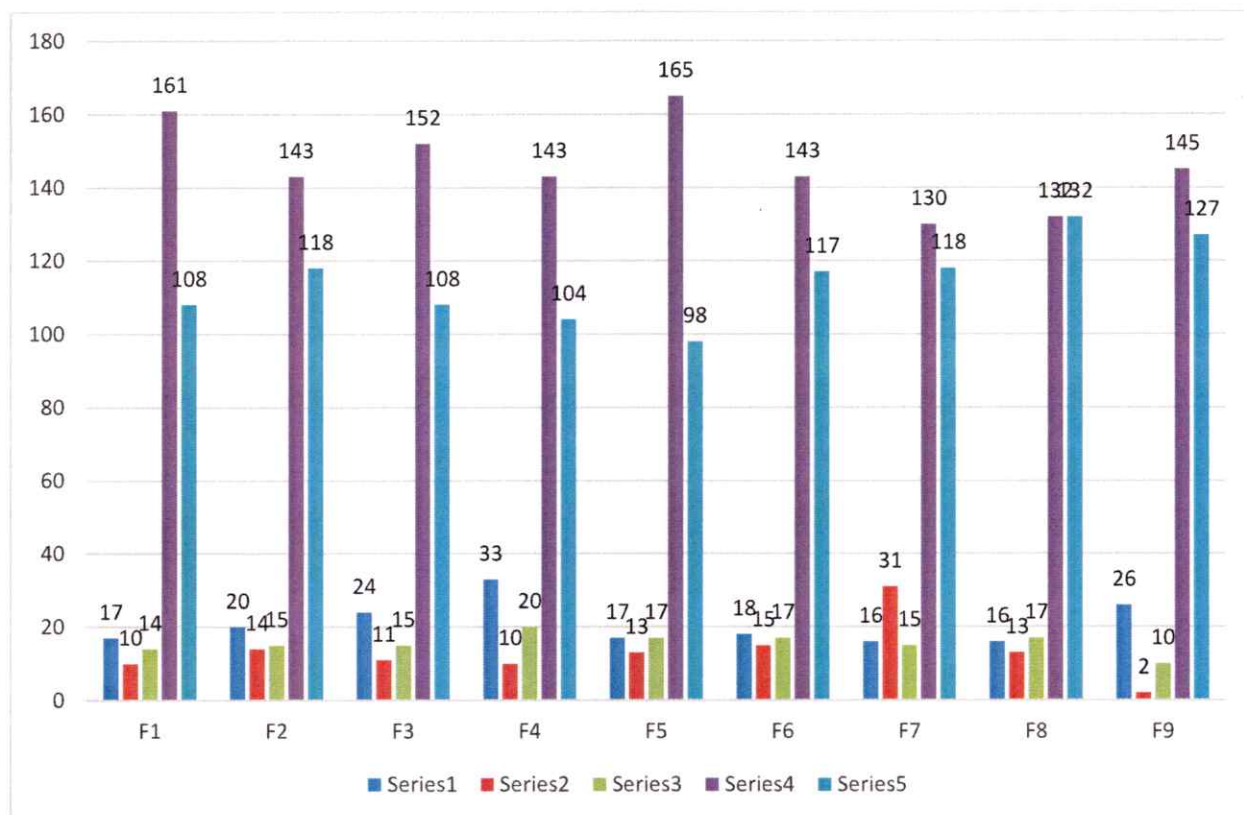
Performance on teaching was evaluated through following 9 factors –

1. F1: The teacher is punctual in the class.
2. F2: The teacher comes well prepared for the lecture
3. F3: The teacher communicates clearly and inspires me by his/ her teaching.
4. F4: The teacher completes the entire syllabus in time.
5. F5: The teacher discusses topics and interacts in the class
6. F6: The teacher encourages for participation and discussion in class.
7. F7: The teacher uses modern teaching aids, handouts, suitable references, power-point presentations (PPT), web-resources, etc.
8. F8: The teacher's attitude towards the students is friendly & helpful.
9. F9: The teacher is available and accessible in Department.

TEACHING										
Ratings	F1	F2	F3	F4	F5	F6	F7	F8	F9	Average Rating
1	17	20	24	33	17	18	16	16	26	4
2	10	14	11	10	13	15	31	13	2	
3	14	15	15	20	17	17	15	17	10	
4	161	143	152	143	165	143	130	132	145	
5	108	118	108	104	98	117	118	132	127	
Average Rating	4	4	4	4	4	4	4	4	4	
No. of Participants in the survey	310	310	310	310	310	310	310	310	310	
% of students satisfied	91	89	89	86	90	89	85	91	91	
% of students dissatisfied	9	11	11	14	10	11	15	9	9	



90% of the students agreed that the classroom discussions are meaningful and help them in understanding the topic in a lucid manner. 91% respondents found their teachers friendly. However, 15% students felt that modern teaching aids including AV systems are required and will enhance their class room experience and learning process. Just under 90% teachers were found encouraging the students for participation and discussion in the class.



EVALUATION

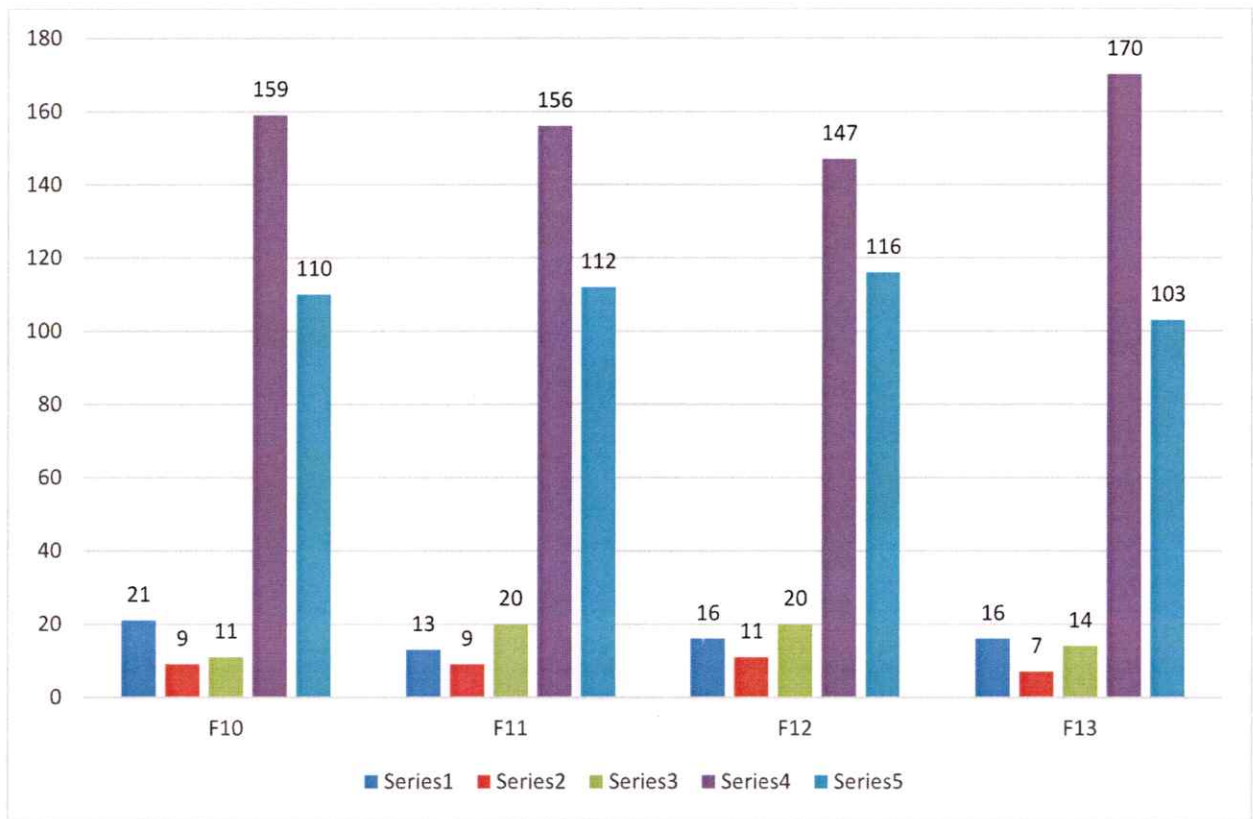
Performance of the “evaluation” criteria is based on 4 factors viz.

1. F10: The evaluation process is fair and unbiased.
2. F11: Regular and timely feedback is given on our (students’) performance.
3. F12: Periodical assessments are conducted as per schedule.
4. F13: I have learnt and understood the subject material/s in this course.

EVALUATION					
Ratings	F10	F11	F12	F13	Average Rating
1	21	13	16	16	4
2	9	9	11	7	
3	11	20	20	14	
4	159	156	147	170	
5	110	112	116	103	
Average Rating	4	4	4	4	
No. of Participants in the survey	310	310	310	310	
% of students satisfied	90	93	91	93	
% of students dissatisfied	10	7	9	7	

The performance on all the four indicators was found good with 91% students sharing their positive sentiments on them.





SECTION – CURRICULUM



RESEARCH METHODOLOGY

Data Type:	Primary
Data Collection Tool:	Survey (Online)
Sample Size:	389
Sample Frame:	Students of IFTM University studying in 2022-23 in School of Computer Science & Applications
Sampling:	Probability Sampling
Questionnaire:	5-point Likert scale (with 5 being most satisfied and 1 being least satisfied)



Curriculum adopted by a university provides not only a structure for teaching; instead it's a measurable plan. It helps quantify the efforts being put by the students along with the other participants of the ecosystem. Its acceptance with all the stake holders is a pre requisite to the ultimate purpose, it tries to achieve.

To bridge any gap between the expectations and the perception about the curriculum, an annual survey is conducted by the university. The questionnaire captures responses on 3 themes viz. acceptance amongst students, perceived relevance and support material. The factors are as follows:

- a. *Acceptance of curriculum amongst students*
- b. *Perceived relevance of the curriculum*
- c. *Support Material for subjects (curriculum)*

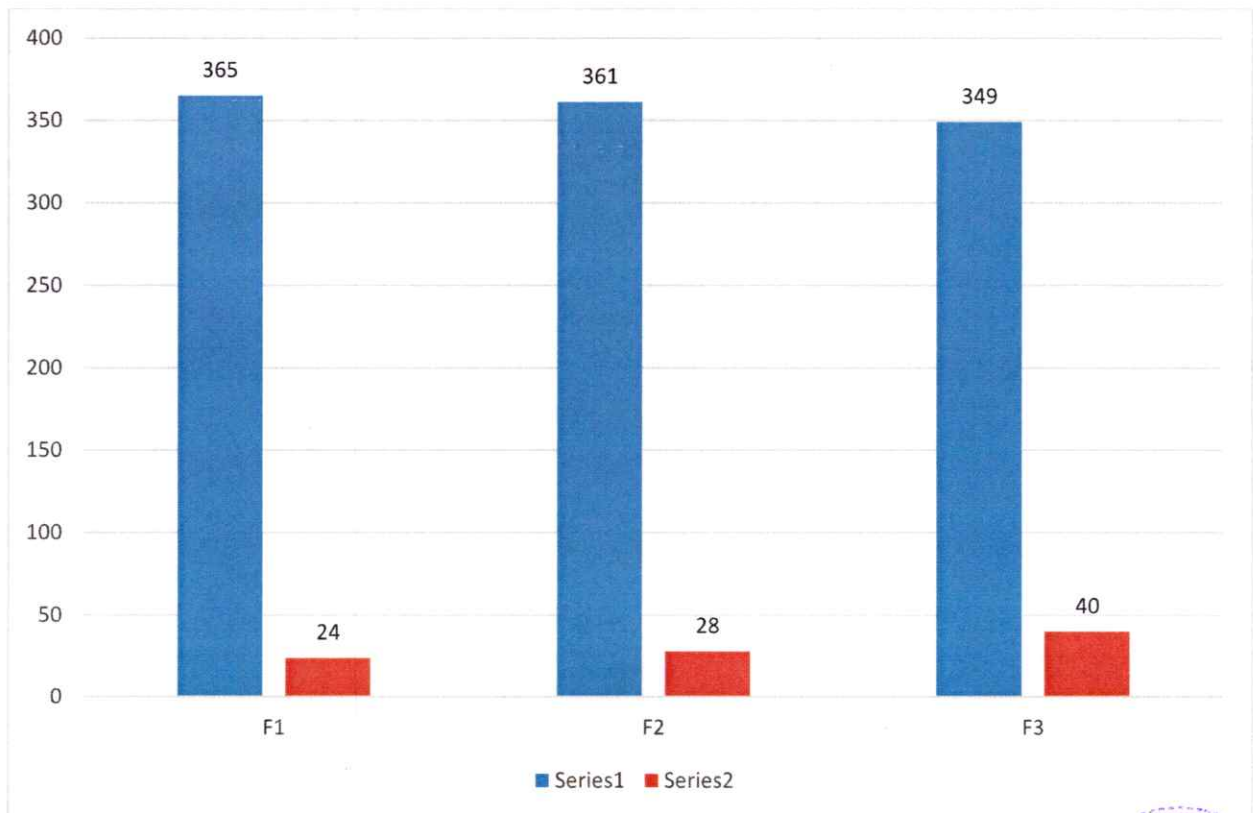


ACCEPTANCE OF CURRICULUM AMONGST STUDENTS –

1. F1: I found the curriculum easy and interesting
2. F2: The instructions given in the curriculum is easy to follow
3. F3: The syllabus has good balance between theory and practical exercises

	ACCEPTANCE		
	F1	F2	F3
Yes	365	361	349
No	24	28	40
Total Responses	389	389	389
Yes %	94	93	90
No %	6	7	10

94% of the respondents found the curriculum easy, which indicates that the curriculum is designed well according to the aptitude level of the students at large. 93% of the respondents found it easy to follow the instructions given in the curriculum. However, 10% of the students felt the need for some adjustment between theory and practical activities.



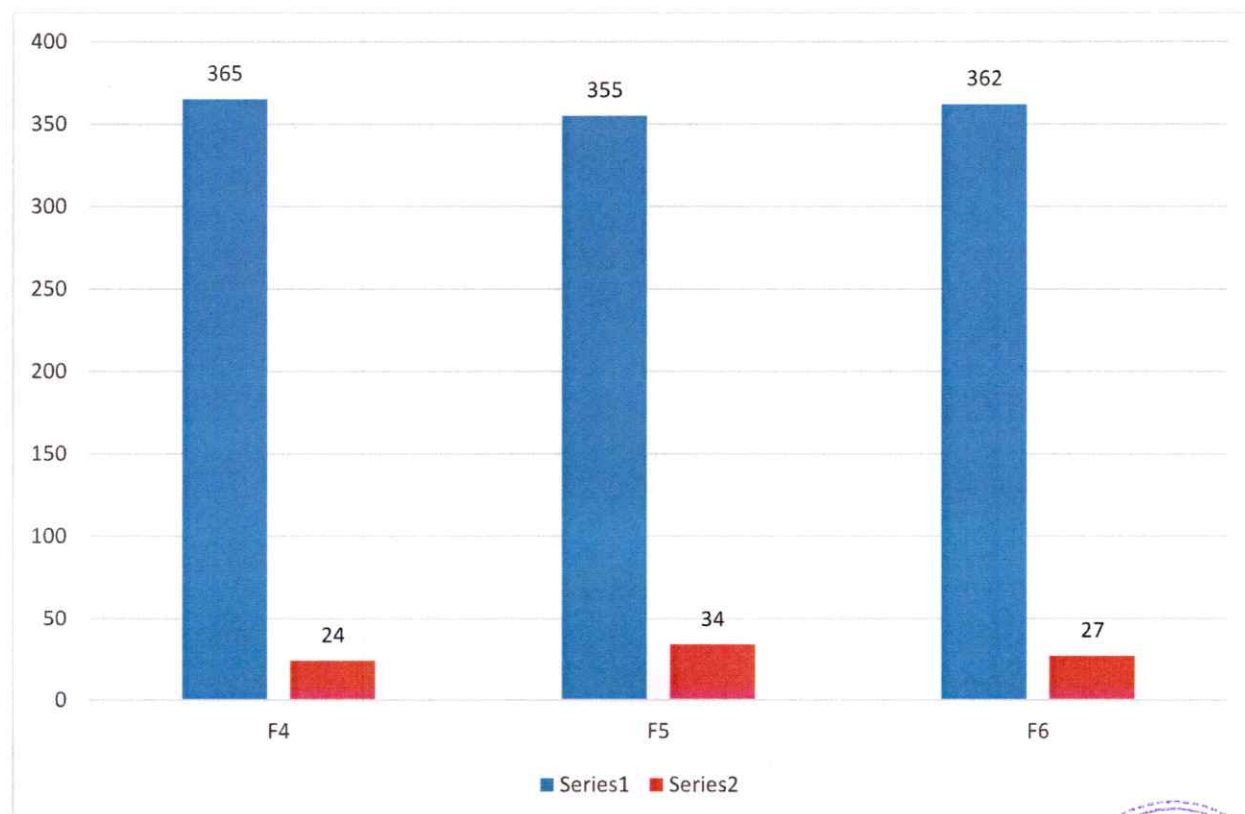
PERCEIVED RELEVANCE OF THE CURRICULUM –

4. F4: The subjects are relevant to my future job aspirations
5. F5: The subjects are very practical and seems applicable in daily life
6. F6: The course has helped me develop my personality

	PERCEIVED RELEVANCE		
	F4	F5	F6
Yes	365	355	362
No	24	34	27
Total Responses	389	389	389
Yes %	94	91	93
No %	6	9	7

91% respondents found the subjects practical and having application in real life. 94% of the students found the subjects relevant according to their future job aspirations. A meagre 7% of the respondents felt the need for personality development classes in their course.

While responses reflect the acceptance, usefulness and contemporary nature of the curriculum at the university; it also highlights the areas for further improvement.



SUPPORT MATERIAL FOR SUBJECTS (CURRICULUM) –

- 7. F7: The reading material and references of the subject are easily available
- 8. F8: Course content is followed by corresponding reference materials?
- 9. F9: What other changes would you like to suggest improving the curriculum / course?

	SUPPORT MATERIAL	
	F7	F8
Yes	345	353
No	44	36
Total Responses	389	389
Yes %	89	91
No %	11	9

While, 91% of the respondents opined that they were provided with the reference material, 11% of the students shared the need of assistance in sourcing the required reading material.

