



आईएफटीएम विश्वविद्यालय, मुरादाबाद, उत्तर प्रदेश  
**IFTM University, Moradabad, Uttar Pradesh**  
NAAC ACCREDITED

**CURRICULUM FEEDBACK REPORT**  
**SCHOOL OF ENGINEERING & TECHNOLOGY**  
**2022-23**

## RESEARCH METHODOLOGY

<b>Data Type:</b>	Primary
<b>Data Collection Tool:</b>	Survey (Online)
<b>Sample Size:</b>	256
<b>Sample Frame:</b>	Students of IFTM University studying in 2022-23 in School of Engineering & Technology
<b>Sampling:</b>	Probability Sampling
<b>Questionnaire:</b>	5-point Likert scale (with 5 being most satisfied and 1 being least satisfied)



Curriculum adopted by a University provides not only a structure for teaching; instead it's a measurable plan. It helps quantify the efforts being put by all the stake holders of the ecosystem. Its acceptance amongst all the stakeholders and suitability is a pre requisite to the ultimate purpose of learning and development, at the University.

To bridge any gap between the expectations and the perception in regards to the curriculum, an annual survey is conducted for all the key stakeholders' viz. students, teachers, alumni and employers.



# **SECTION – STUDENTS**



For students, the questionnaire captured responses on 3 themes viz.:

1. Acceptance of curriculum amongst students
2. Perceived relevance of the curriculum
3. Availability and acceptance of support material for subjects (curriculum)

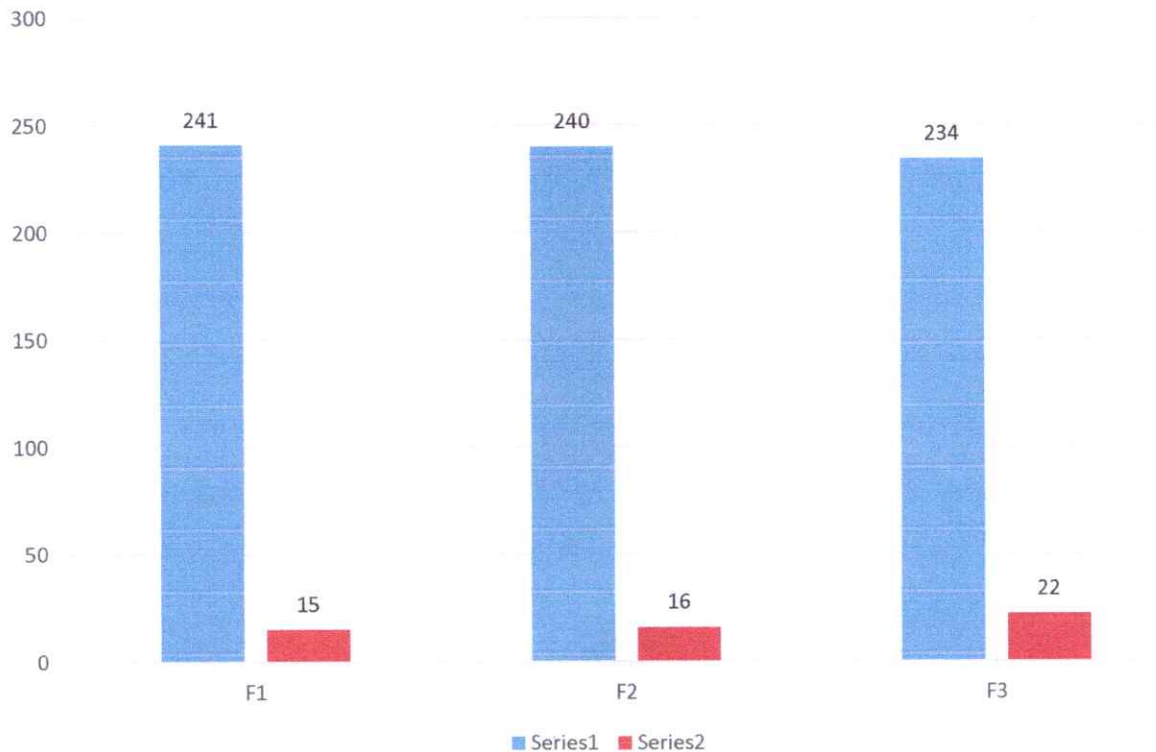


### ACCEPTANCE OF CURRICULUM AMONGST STUDENTS –

1. F1: I found the curriculum easy and interesting
2. F2: The instructions given in the curriculum is easy to follow
3. F3: The syllabus has good balance between theory and practical exercises

	ACCEPTANCE		
	F1	F2	F3
Yes	241	240	234
No	15	16	22
Total Responses	256	256	256
Yes %	94	94	91
No %	6	6	9

94% of the respondents found the curriculum easy, which indicates that the curriculum is designed well according to the aptitude level of the students at large. 94% of the respondents found it easy to follow the instructions given in the curriculum. However, 9% of the students felt the need for some adjustment between theory and practical activities.



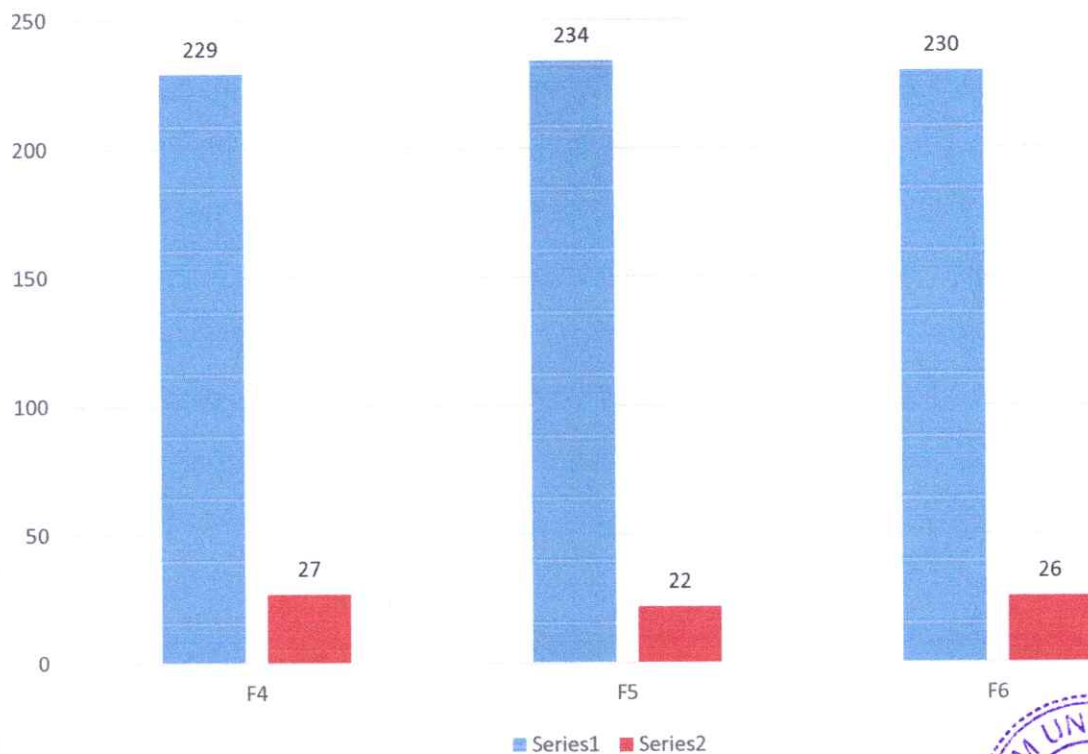
### PERCEIVED RELEVANCE OF THE CURRICULUM –

4. F4: The subjects are relevant to my future job aspirations
5. F5: The subjects are very practical and seems applicable in daily life
6. F6: The course has helped me develop my personality

PERCEIVED RELEVANCE			
	F4	F5	F6
Yes	229	234	230
No	27	22	26
Total Responses	256	256	256
Yes %	89	91	90
No %	11	9	10

91% respondents found the subjects practical and having application in real life. However, 11% of the respondents felt the subjects having limited relevance for their personal job aspirations.

While responses reflect the acceptance, usefulness and contemporary nature of the curriculum at the university; it also highlights the areas for further improvement.



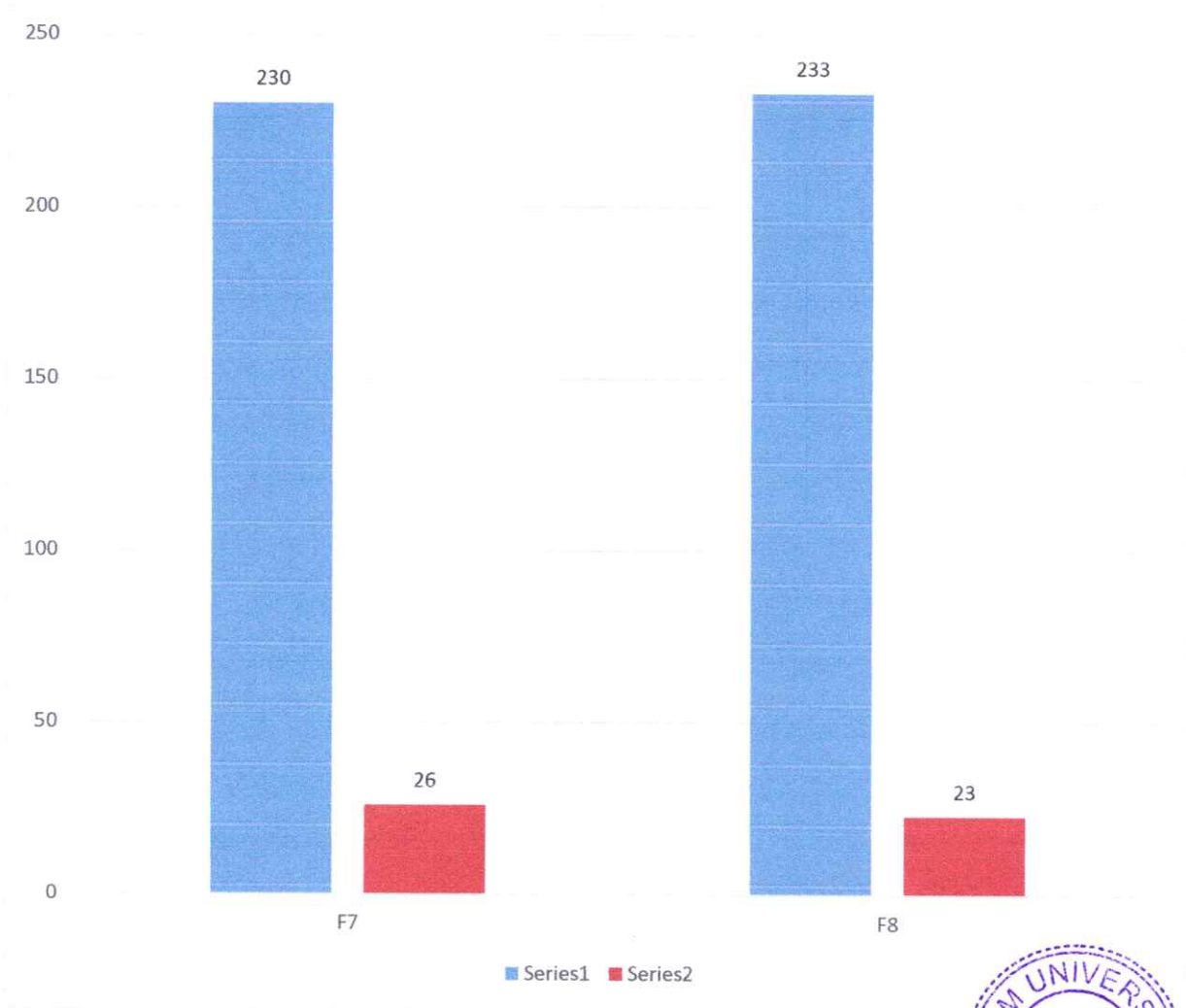


**SUPPORT MATERIAL FOR SUBJECTS (CURRICULUM) –**

- 7. F7: The reading material and references of the subject are easily available
- 8. F8: Course content is followed by corresponding reference materials?
- 9. F9: What other changes would you like to suggest improving the curriculum / course?

	SUPPORT MATERIAL	
	F7	F8
Yes	230	233
No	26	23
<b>Total Responses</b>	<b>256</b>	<b>256</b>
Yes %	90	91
No %	10	9

While, 91% of the respondents opined that they were provided with the reference material, 90% of the students shared that the required reading material is ubiquitously available.



# **SECTION – TEACHERS**

## RESEARCH METHODOLOGY

<b>Data Type:</b>	Primary
<b>Data Collection Tool:</b>	Survey (Online)
<b>Sample Size:</b>	67
<b>Sample Frame:</b>	Teachers of IFTM University in 2022-23 in School of Engineering & Technology
<b>Sampling:</b>	Probability Sampling
<b>Questionnaire:</b>	5-point Likert scale (with 5 being most satisfied and 1 being least satisfied)



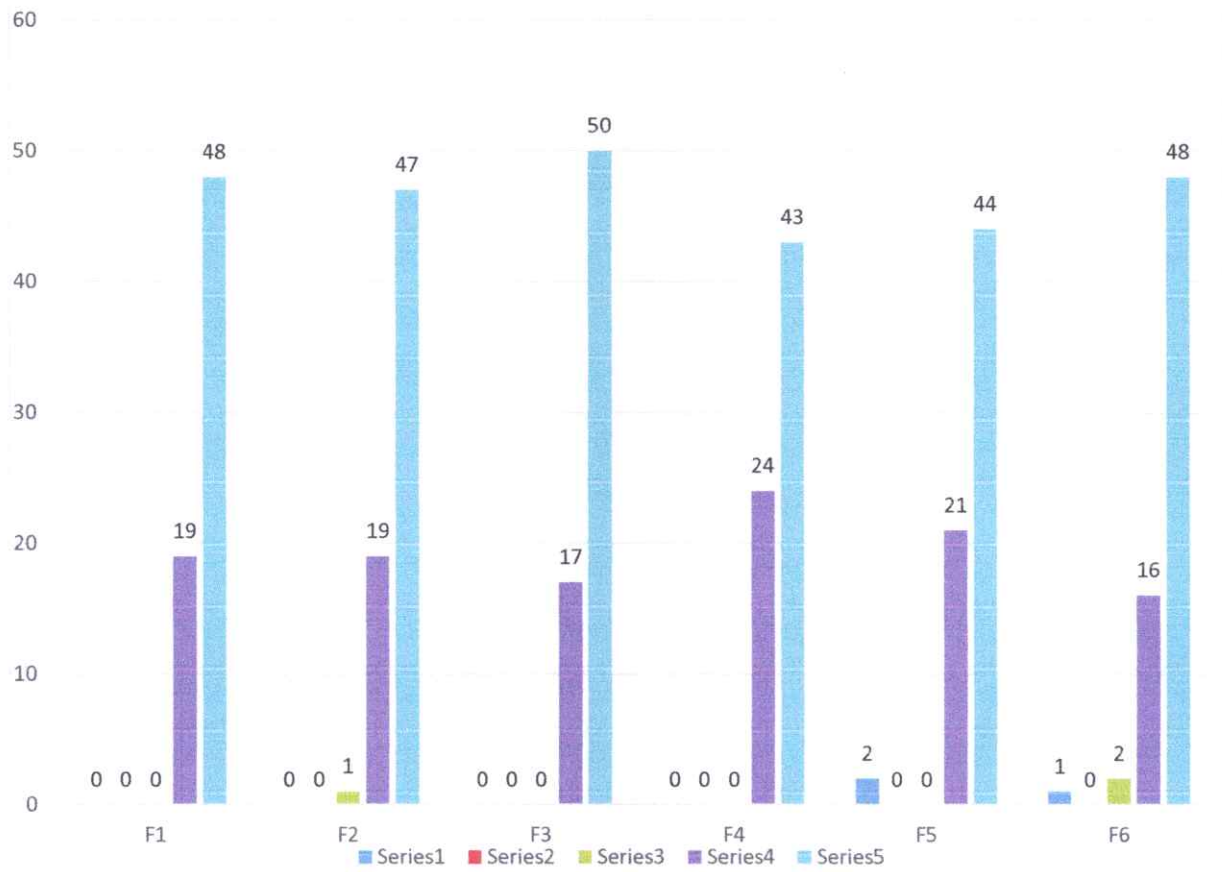
For teachers, the questionnaire captures responses in the following areas:

- a. F1: Syllabus is suitable to the course
- b. F2: Syllabus is need based
- c. F3: Aims and objectives of the syllabi are well defined and clear to teachers and students
- d. F4: The course/syllabus has good balance between theory and application.
- e. F5: The course/syllabus has made me interested in the subject area.
- f. F6: The course/syllabus of this subject increased my knowledge and perspective in the subject area

SYLLABUS / CURRICULUM							
	F1	F2	F3	F4	F5	F6	Average Rating
1	0	0	0	0	2	1	5
2	0	0	0	0	0	0	
3	0	1	0	0	0	2	
4	19	19	17	24	21	16	
5	48	47	50	43	44	48	
Average Rating	5	5	5	5	5	5	
No. of Participants in the survey	67	67	67	67	67	67	
% of teachers satisfied	100	100	100	100	97	99	
% of teachers dissatisfied	0	0	0	0	3	1	







The survey did not find any adverse feedback on this parameter.



# **SECTION – ALUMNI**

## RESEARCH METHODOLOGY

<b>Data Type:</b>	Primary
<b>Data Collection Tool:</b>	Survey (Online)
<b>Sample Size:</b>	78
<b>Sample Frame:</b>	Students of IFTM University who passed out of the University before 2022-23 in School of Engineering & Technology
<b>Sampling:</b>	Non Probability Sampling
<b>Questionnaire:</b>	5-point Likert scale (with 5 being most satisfied and 1 being least satisfied)



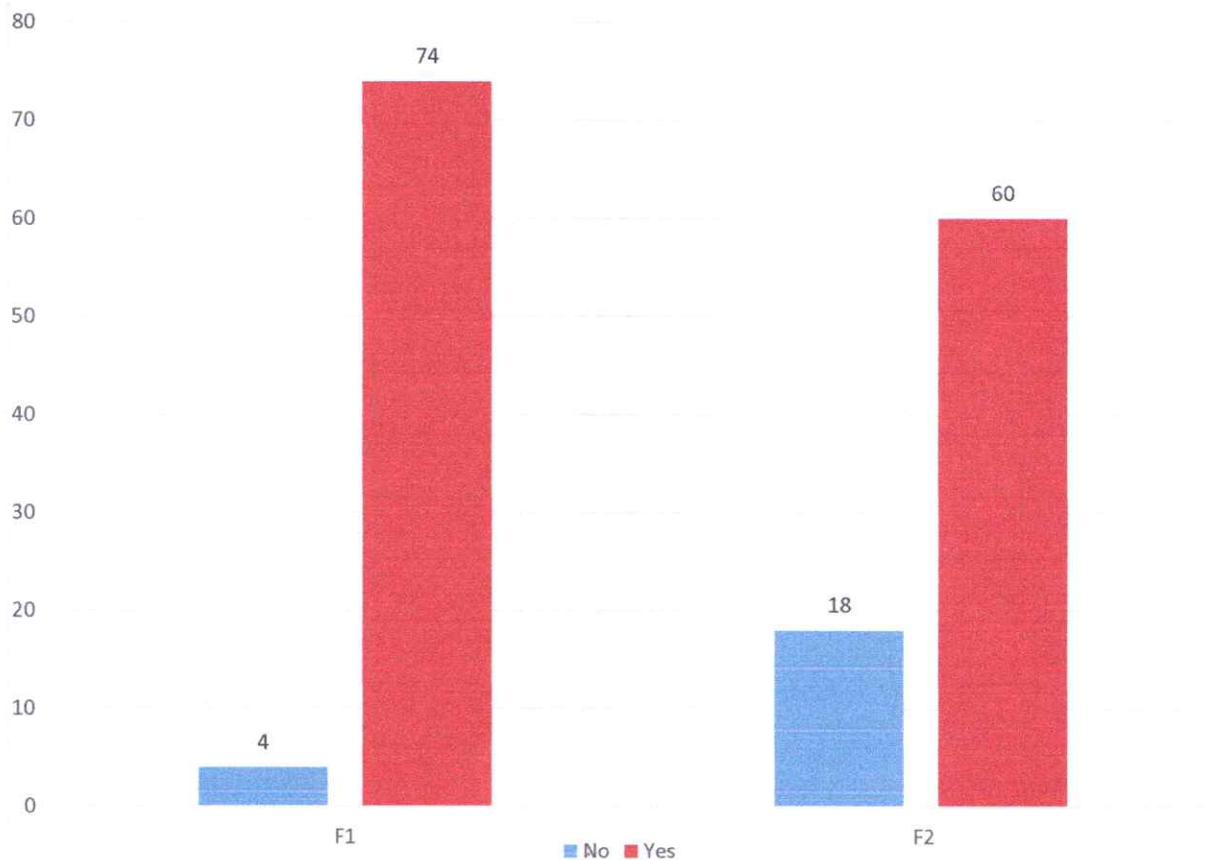
The responses of the alumni are likely to be free of any biases of any kind. To capture the responses of these erstwhile students of the University, an online survey is conducted every year. Amongst the many other dimensions, curriculum stands as the most important one.

The former students were asked dichotomous questions about:

- a. F1: Have you obtained sufficient know-how (both in theory and practice) at IFTMU?
- b. F2: Is the education imparted at IFTMU useful and relevant in your present job?

	No	Yes	Grand Total	Agreed Percentage	Disagreed Percentage
F1	4	74	78	95	5
F2	18	60	78	77	23

The survey revealed that 77% of the alumni found the education imparted i.e. curriculum at the University useful and relevant. 95% of the respondents agreed that they got sufficient know-how to do their professional tasks.





To understand the scenario better, some responses were sought on a 5 point scale, viz. for the factors:

- a. F1: Significance of the course(s) that you learnt in relation to your current job
- b. F2: Learning experience in terms of their relevance to the real life application
- c. F3: Professional courses and their suitability to the Industry
- d. F4: Industry Oriented Projects (if applicable)
- e. F5: Seminars & Workshop
- f. F6: Guest Lectures
- g. F7: Special Training Classes for bridging Industry/Academic gap

	Poor	Average	Good	Very Good	Excellent	Grand Total	Satisfied Percentage	Not Satisfied Percentage
F1	2	4	23	34	15	78	92	8
F2	0	1	26	30	21	78	99	1
F3	1	2	21	20	34	78	96	4
F4	9	16	7	14	32	78	68	32
F5	8	8	6	13	43	78	79	21
F6	8	6	5	18	41	78	82	18
F7	13	9	8	6	42	78	72	28

32% of the responding alumni shared their discontent with the industry-oriented projects provided to them. 21% opined that the quality of seminars and workshop conducted for them during the course did not meet their expectations. 28% of these alumni were also found dissatisfied with the special training classes run for them.



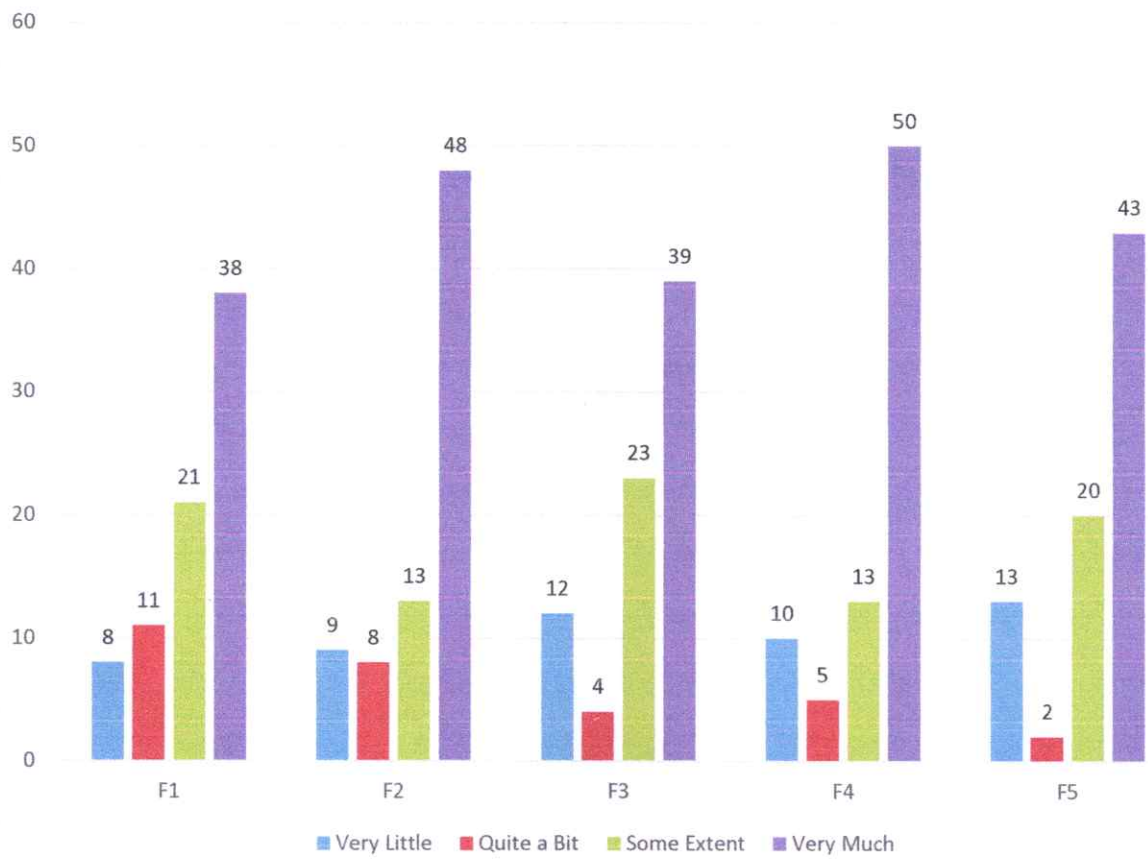
To evaluate the performance on this parameter of Program Educational Objectives, questions were asked in reference to 5 factors viz.

1. F1: Preparation: To educate students for graduate and postgraduate programs and to help them succeed in their chosen/ related fields.
2. F2: Core Competence: To provide students with sound knowledge in their chosen area.
3. F3: Breadth: To train students with knowledge relating to an array of professional fields undertaken so as to comprehend, analyze, design, and create innovative products and find solutions to improve the quality of life
4. F4: Professionalism: To create professionally superior and ethically strong global manpower and to uphold moral values. With effective communication skills, teamwork skills, multidisciplinary approach, and an ability to improve the quality of life.
5. F5: Learning Environment: To create an intellectual environment for research and development aware of emerging technologies leading to continual learning needed for a successful professional career, to create a center of excellence develop technocrats and business leaders.

17% of the respondents felt that the software and technologies taught at the university needs to be upgraded and the learning environment needs to be improved.

	Very Little	Quite a Bit	Some Extent	Very Much	Total Responses	Satisfied Percentage	Not Satisfied Percentage
F1	8	11	21	38	78	90	10
F2	9	8	13	48	78	88	12
F3	12	4	23	39	78	85	15
F4	10	5	13	50	78	87	13
F5	13	2	20	43	78	83	17







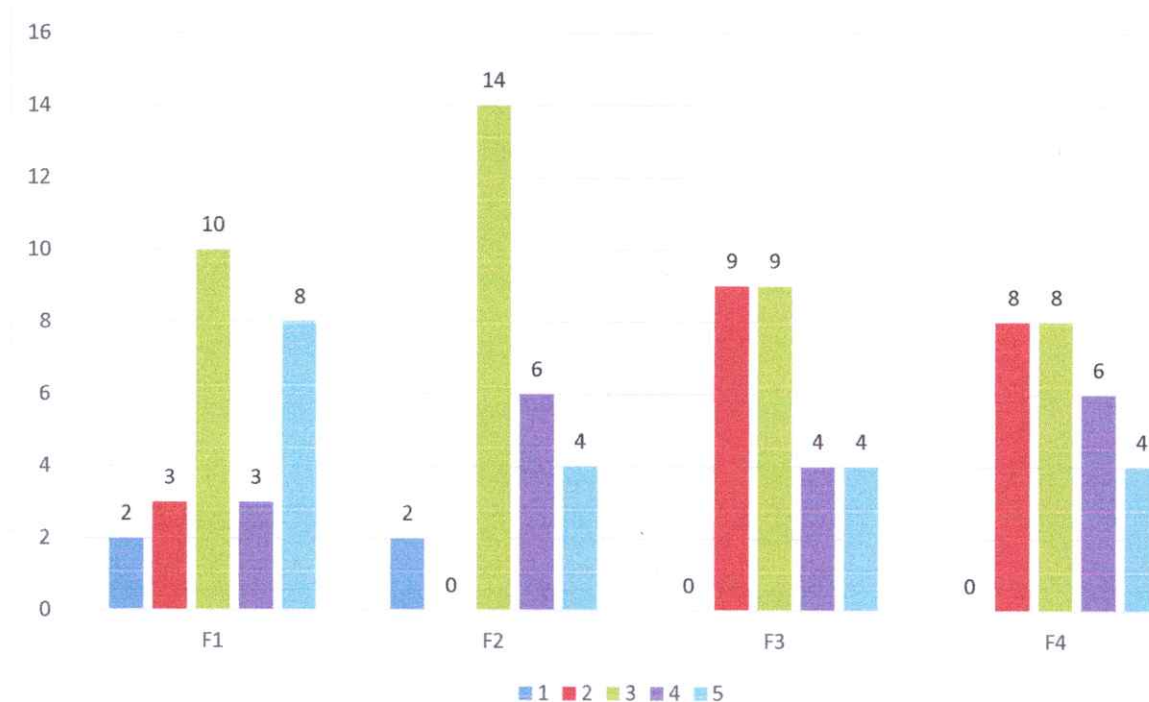
**SECTION – EMPLOYER  
(INDUSTRY)**

The technical skills demonstrated by the employed / professionals at workplace is a very important indicator of the quality and sufficiency of the curriculum. Responses were sought on the following parameters:

- a. F1: Technical knowledge/skill
- b. F2: Using technology and workplace equipment.
- c. F3: Developing practical solutions to work place problems
- d. F4: Innovativeness and creativity

	1	2	3	4	5	Satisfied %	Dissatisfied %
F1	2	3	10	3	8	81	19
F2	2	0	14	6	4	92	8
F3	0	9	9	4	4	65	35
F4	0	8	8	6	4	69	31

A substantial number of employers shared their concern about the knowledge, skills and the ability of students they recruited in developing practical solutions to work place problems.





आईएफटीएम विश्वविद्यालय, मुरादाबाद, उत्तर प्रदेश  
**IFTM University, Moradabad, Uttar Pradesh**  
NAAC ACCREDITED

**STUDENT FEEDBACK REPORT**  
**SCHOOL OF ENGINEERING & TECHNOLOGY**  
**2022-23**

# SECTION – FACILITIES



## RESEARCH METHODOLOGY

<b>Data Type:</b>	Primary
<b>Data Collection Tool:</b>	Survey (Online)
<b>Sample Size:</b>	344
<b>Sample Frame:</b>	Students of IFTM University studying in 2022-23 in School of Engineering & Technology
<b>Sampling:</b>	Probability
<b>Questionnaire:</b>	5-point Likert scale (with 5 being most satisfied and 1 being least satisfied)



In its pursuit of excellence, IQAC at IFTM University conducts a student survey every year; to learn about any scope of improvement in its functioning.

The student responses are sought in the following 5 areas viz.

1. Library
2. Institutional Facilities
3. Examination & Evaluation
4. Placement Cell
5. Student Support

Performance in these areas gets measured through responses given to specific questions (factors) in the questionnaire (Student Survey). In 2022-23, 1984 students participated in the survey. Out of these responses, 286 were from School of Engineering & Technology. The findings of the survey on the above mentioned 5 areas are presented in the following section.





## LIBRARY

Library is the epicenter of knowledge in any academic institute. It provides its users place to brain storm and learn. The effectiveness of library facility was measured through the following factors.

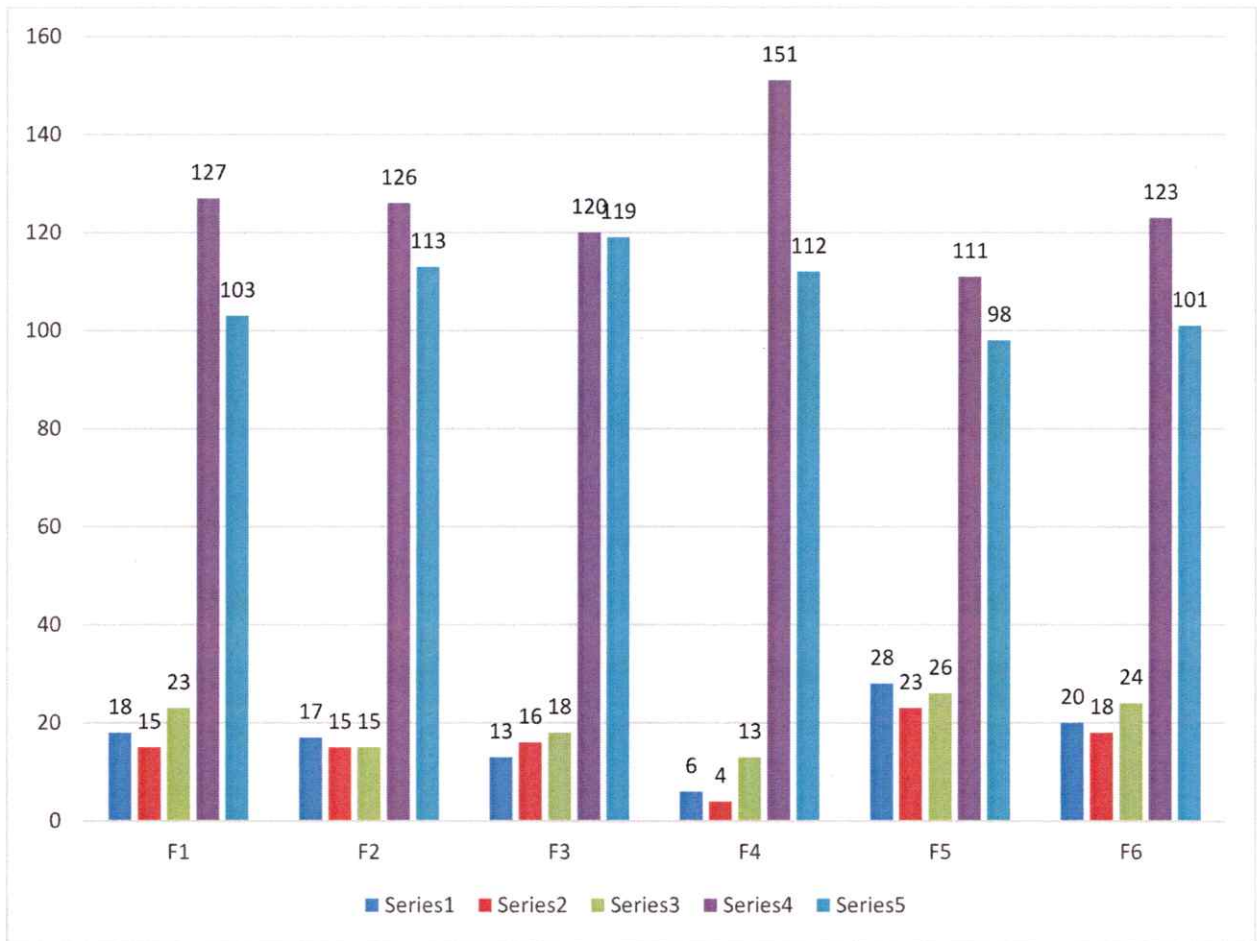
1. F1: The prescribed books/reading materials are available in the library.
2. F2: Reading room and common room are available in the faculty/college building
3. F3: Available reading space in library is satisfactory
4. F4: The library staff are cooperative and helpful
5. F5: Photocopying facility in the library/Department is available and satisfactory
6. F6: Online educational resources are available and accessible

Out of 286 respondents, 18% respondents felt that reprography services in library need improvement. The survey also revealed that 13% respondents had some issue in accessing the online resources available for them. 11% of the respondents also felt that the titles in their area of study are available in lesser in number than expected.

LIBRARY							
Ratings	F1	F2	F3	F4	F5	F6	Cumulative Rating
1	18	17	13	6	28	20	4
2	15	15	16	4	23	18	
3	23	15	18	13	26	24	
4	127	126	120	151	111	123	
5	103	113	119	112	98	101	
<b>Average Rating</b>	4	4	4	4	4	4	
<b>No. of Participants in the survey</b>	286	286	286	286	286	286	
<b>% of students satisfied</b>	88	89	90	97	82	87	
<b>% of students dissatisfied</b>	12	11	10	3	18	13	







## INSTITUTIONAL FACILITIES

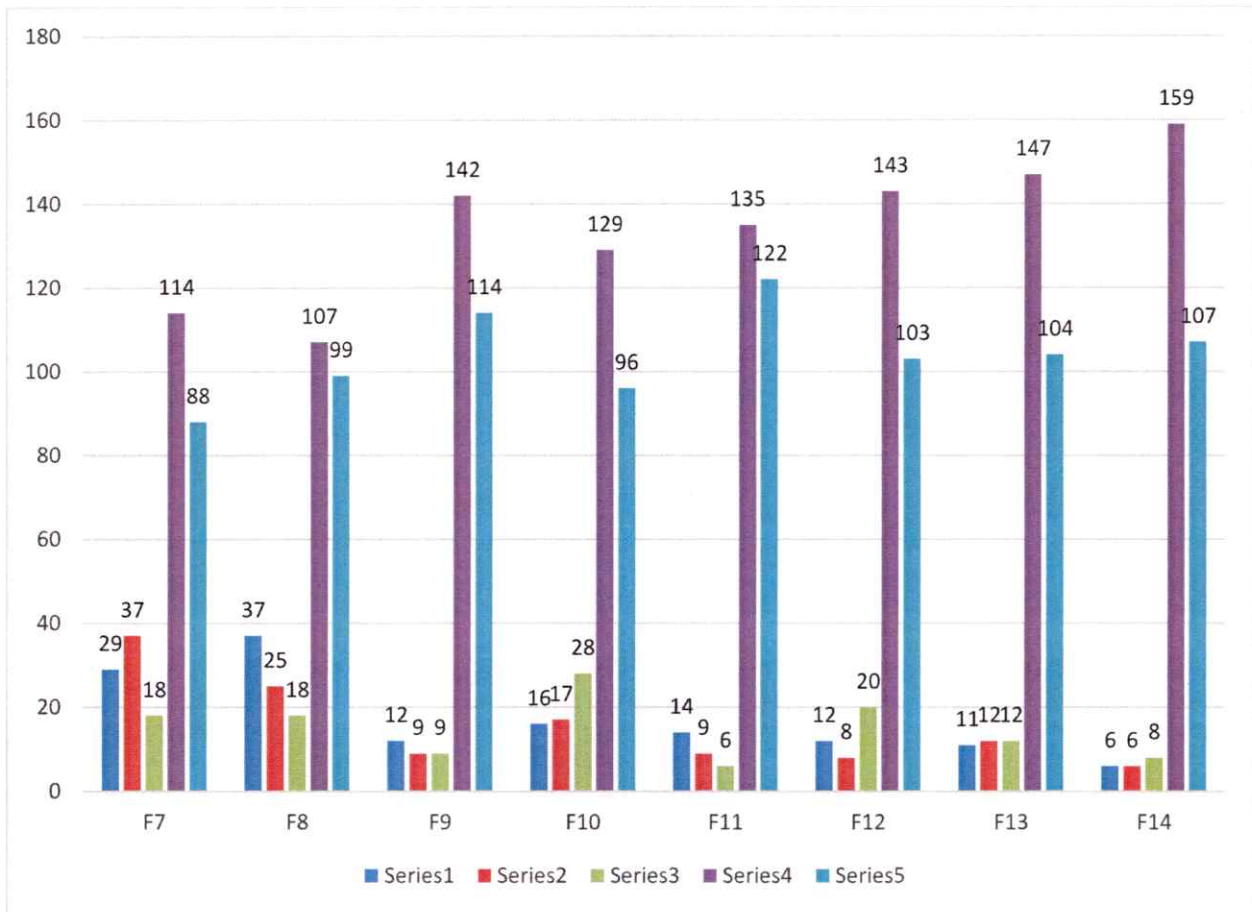
The institutional facilities provide students an environment conducive to learning and help them realize their true potential. The performance on this parameter was measured through various factors viz.

1. F7: Internet facilities are available in the department
2. F8: Toilets/washrooms are hygienic and properly maintained.
3. F9: Clean drinking water is available in the department and on the campus
4. F10: Equipment in the lab(s) is in working condition.
5. F11: The campus is green and Eco friendly
6. F12: The buildings/classrooms are accessible to differently abled persons.
7. F13: The classrooms are clean and well maintained
8. F14: The campus has adequate power supply.

Out of 286 respondents, 92% agreed that the environment at IFTM is ecofriendly and green. The same percentage of respondents also shared their satisfaction with the classrooms and its infrastructure. However, 23% of the respondents viewed internet connectivity at their respective departments as not satisfactory. 22% of the respondents also felt that more cleanliness and hygiene is required to be maintained in the wash rooms.

INSTITUTIONAL FACILITIES									
Ratings	F7	F8	F9	F10	F11	F12	F13	F14	Cumulative Rating
1	29	37	12	16	14	12	11	6	4
2	37	25	9	17	9	8	12	6	
3	18	18	9	28	6	20	12	8	
4	114	107	142	129	135	143	147	159	
5	88	99	114	96	122	103	104	107	
<b>Average Rating</b>	4	4	4	4	4	4	4	4	
<b>No. of Participants in the survey</b>	286	286	286	286	286	286	286	286	
<b>% of students satisfied</b>	77	78	93	88	92	93	92	96	
<b>% of students dissatisfied</b>	23	22	7	12	8	7	8	4	







## EXAMINATION & EVALUATION

Examination and its evaluation were measured with the help of following factor.

1. F15: Results and attendance records are displayed on time

94% of the respondents agreed that the results and attendance records are displayed on time. The average rating for this factor was 4.

EXAMINATION & EVALUATION		
Ratings	F15	Cumulative Rating
1	7	4
2	9	
3	18	
4	138	
5	114	
Average Rating	4	
No. of Participants in the survey	286	
% of students satisfied	94	
% of students dissatisfied	6	

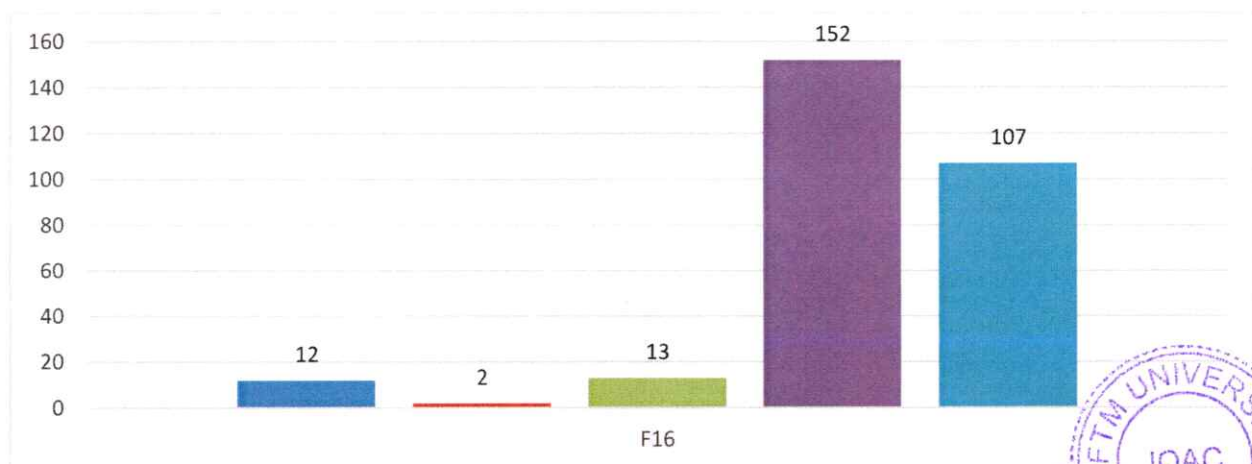


## PLACEMENT CELL

The performance of placement cell and its functioning was found satisfactory by 95% of the respondents. The average rating being given to the university on this parameter was 4. Student's perception and experience with the placement cell was sought.

1. F16: The functioning of the placement cell(s) in the university/department is satisfactory.

PLACEMENT CELL		
Ratings	F16	Cumulative Rating
1	12	4
2	2	
3	13	
4	152	
5	107	
Average Rating	4	
No. of Participants in the survey	286	
% of students satisfied	95	
% of students dissatisfied	5	



## STUDENT SUPPORT

Though university aims to facilitate its students proactively, it may happen that students have some grievances and suggestions. To get their concerns addressed, they may require meeting functionaries across departments.

To measure performance in this area, responses were sought on the following factors –

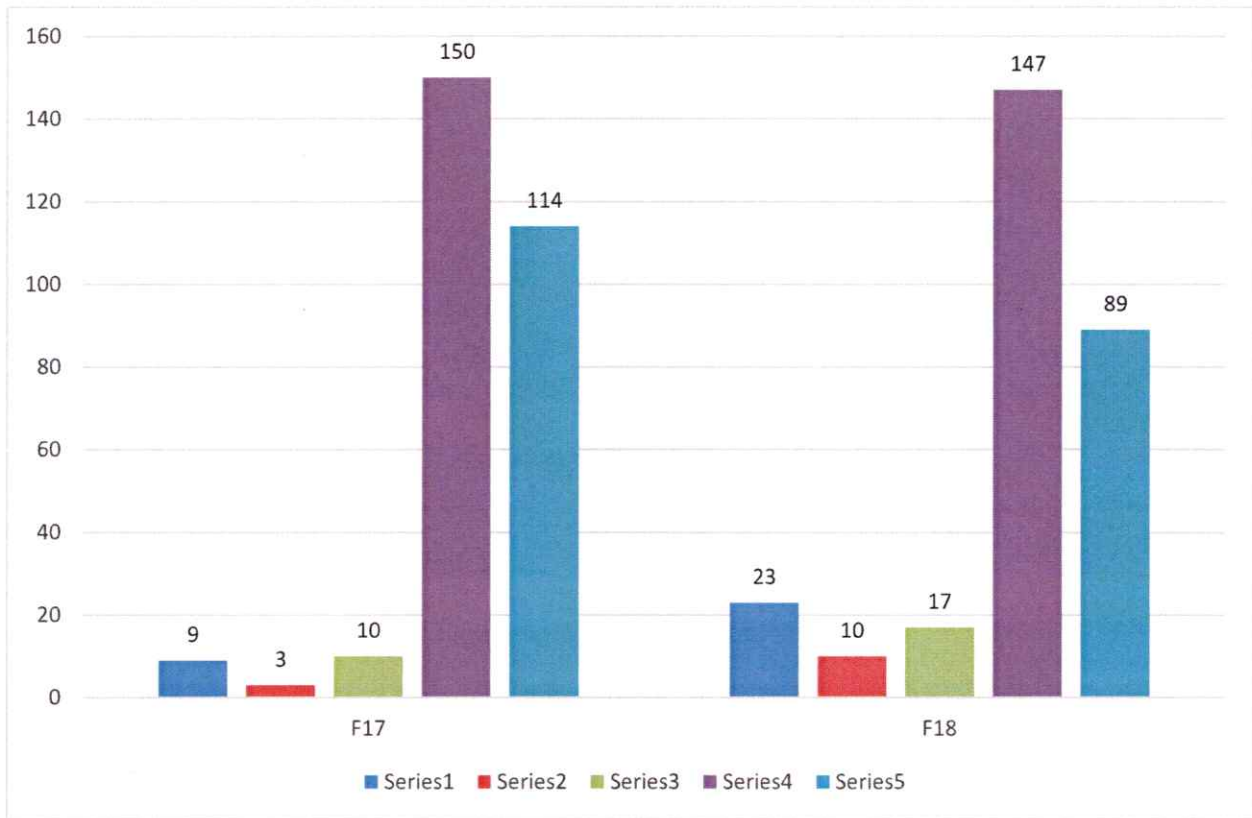
1. F17: The office staff in the department is helpful.
2. F18: Grievances/problems are redressed/ solved well in time.

96% of the respondents found their interaction with office staff as helpful. About 12% of the respondents shared that grievances and problems needs to be resolved more efficiently and effectively.

<b>STUDENT SUPPORT</b>			
<b>Ratings</b>	<b>F17</b>	<b>F18</b>	<b>Cumulative Rating</b>
<b>1</b>	9	23	4
<b>2</b>	3	10	
<b>3</b>	10	17	
<b>4</b>	150	147	
<b>5</b>	114	89	
<b>Average Rating</b>	4	4	
<b>No. of Participants in the survey</b>	286	286	
<b>% of students satisfied</b>	96	88	
<b>% of students dissatisfied</b>	4	12	









# **SECTION – TEACHING & EVALUATION**



## RESEARCH METHODOLOGY

<b>Data Type:</b>	Primary
<b>Data Collection Tool:</b>	Survey (Online)
<b>Sample Size:</b>	259
<b>Sample Frame:</b>	Students of IFTM University studying in 2022-23 in School of Engineering & Technology
<b>Sampling:</b>	Probability
<b>Questionnaire:</b>	5-point Likert scale (with 5 being most satisfied and 1 being least satisfied)



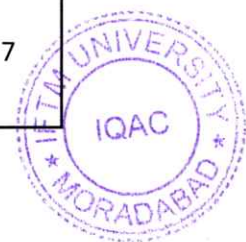
Teaching and evaluation of students are at the core of any academic institute. It helps in bringing the desired change in the students and helps them contribute in making society a better place. To learn about the performance in these two areas, a questionnaire was prepared and administered through a survey.

## TEACHING

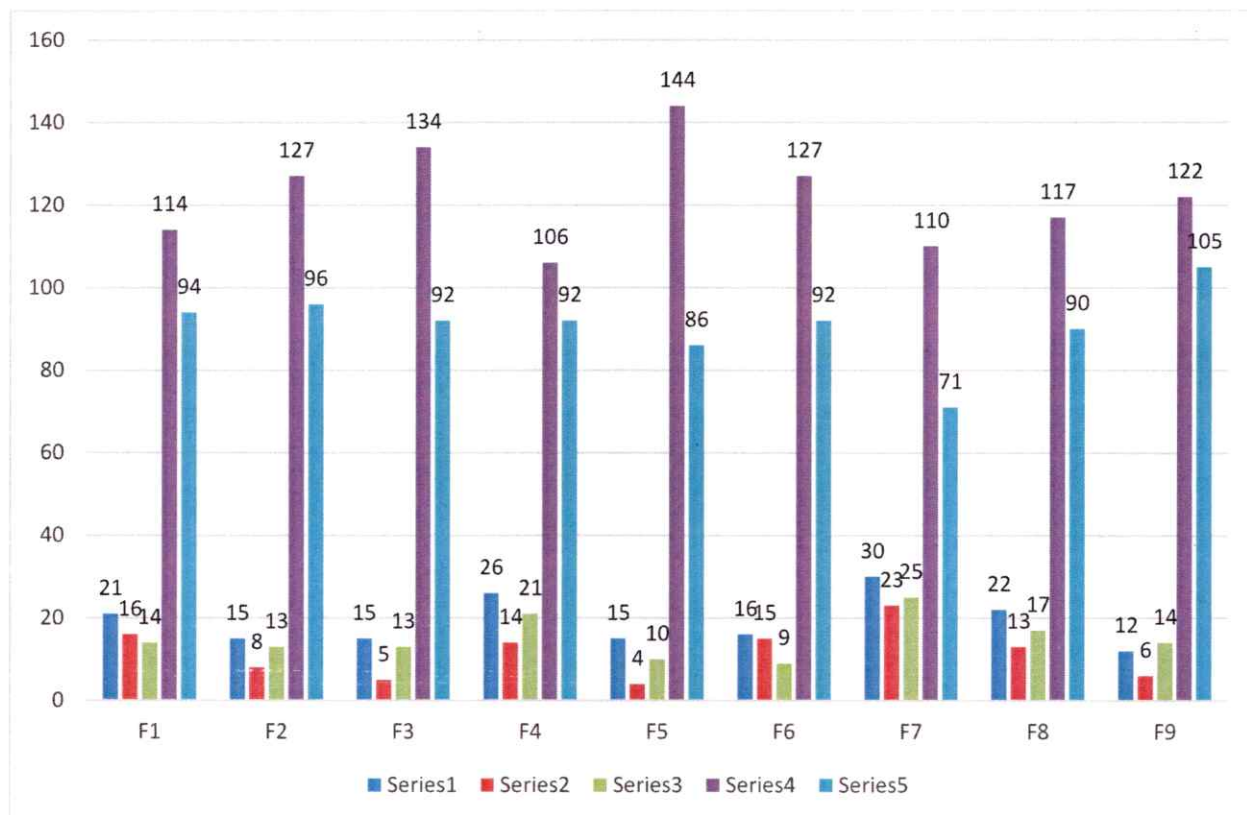
Performance on teaching was evaluated through following 9 factors –

1. F1: The teacher is punctual in the class.
2. F2: The teacher comes well prepared for the lecture
3. F3: The teacher communicates clearly and inspires me by his/ her teaching.
4. F4: The teacher completes the entire syllabus in time.
5. F5: The teacher discusses topics and interacts in the class
6. F6: The teacher encourages for participation and discussion in class.
7. F7: The teacher uses modern teaching aids, handouts, suitable references, power-point presentations (PPT), web-resources, etc.
8. F8: The teacher's attitude towards the students is friendly & helpful.
9. F9: The teacher is available and accessible in Department.

TEACHING										
	F1	F2	F3	F4	F5	F6	F7	F8	F9	Average Rating
1	21	15	15	26	15	16	30	22	12	4
2	16	8	5	14	4	15	23	13	6	
3	14	13	13	21	10	9	25	17	14	
4	114	127	134	106	144	127	110	117	122	
5	94	96	92	92	86	92	71	90	105	
Average Rating	4	4	4	4	4	4	4	4	4	
No. of Participants in the survey	259	259	259	259	259	259	259	259	259	
% of students satisfied	86	91	92	85	93	88	80	86	93	
% of students dissatisfied	14	9	8	15	7	12	20	14	7	



More than 90% of the students agreed that the teachers come well prepared and on time to the class. 93% respondents rated classroom discussions as meaningful and help understanding the topic in a lucid manner. However, 20% students felt that modern teaching aids including AV systems are required and will enhance their class room experience and learning process. 15% students opined that they experienced some part of the syllabus got inadvertently left during the course of study.





## EVALUATION

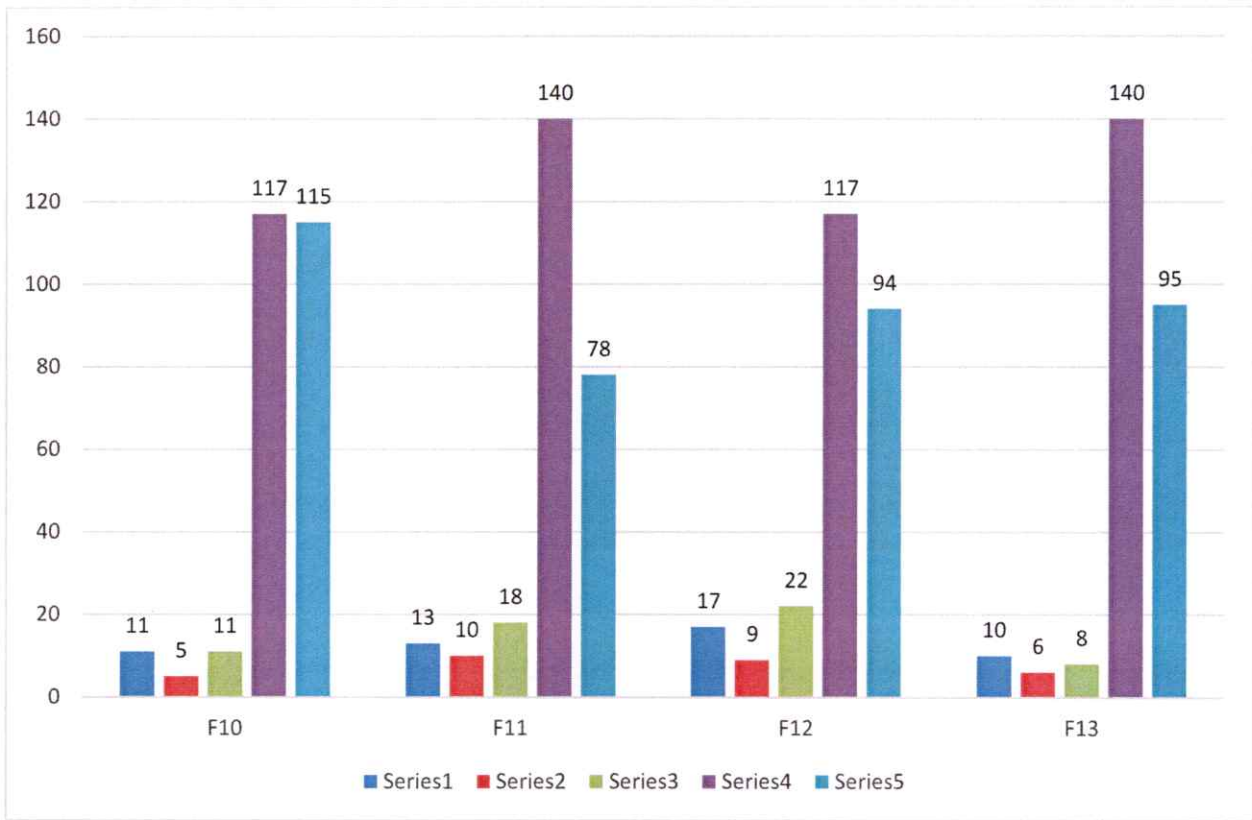
Performance of the “evaluation” criteria is based on 4 factors viz.

1. F10: The evaluation process is fair and unbiased.
2. F11: Regular and timely feedback is given on our (students’) performance.
3. F12: Periodical assessments are conducted as per schedule.
4. F13: I have learnt and understood the subject material/s in this course.

EVALUATION					
	F10	F11	F12	F13	Average Rating
1	11	13	17	10	4
2	5	10	9	6	
3	11	18	22	8	
4	117	140	117	140	
5	115	78	94	95	
<b>Average Rating</b>	4	4	4	4	
<b>No. of Participants in the survey</b>	259	259	259	259	
<b>% of students satisfied</b>	94	91	90	94	
<b>% of students dissatisfied</b>	6	9	10	6	

94% of the students were satisfied with the process and performance of evaluation exercise in the university. They agreed that the evaluation process is fair and unbiased.





# SECTION – CURRICULUM



## RESEARCH METHODOLOGY

<b>Data Type:</b>	Primary
<b>Data Collection Tool:</b>	Survey (Online)
<b>Sample Size:</b>	256
<b>Sample Frame:</b>	Students of IFTM University studying in 2022-23 in School of Engineering & Technology
<b>Sampling:</b>	Probability Sampling
<b>Questionnaire:</b>	5-point Likert scale (with 5 being most satisfied and 1 being least satisfied)





Curriculum adopted by a university provides not only a structure for teaching; instead it's a measurable plan. It helps quantify the efforts being put by the students along with the other participants of the ecosystem. Its acceptance with all the stake holders is a pre requisite to the ultimate purpose, it tries to achieve.

To bridge any gap between the expectations and the perception about the curriculum, an annual survey is conducted by the university. The questionnaire captures responses on 3 themes viz. acceptance amongst students, perceived relevance and support material. The factors are as follows:

- a. *Acceptance of curriculum amongst students*
- b. *Perceived relevance of the curriculum*
- c. *Support Material for subjects (curriculum)*

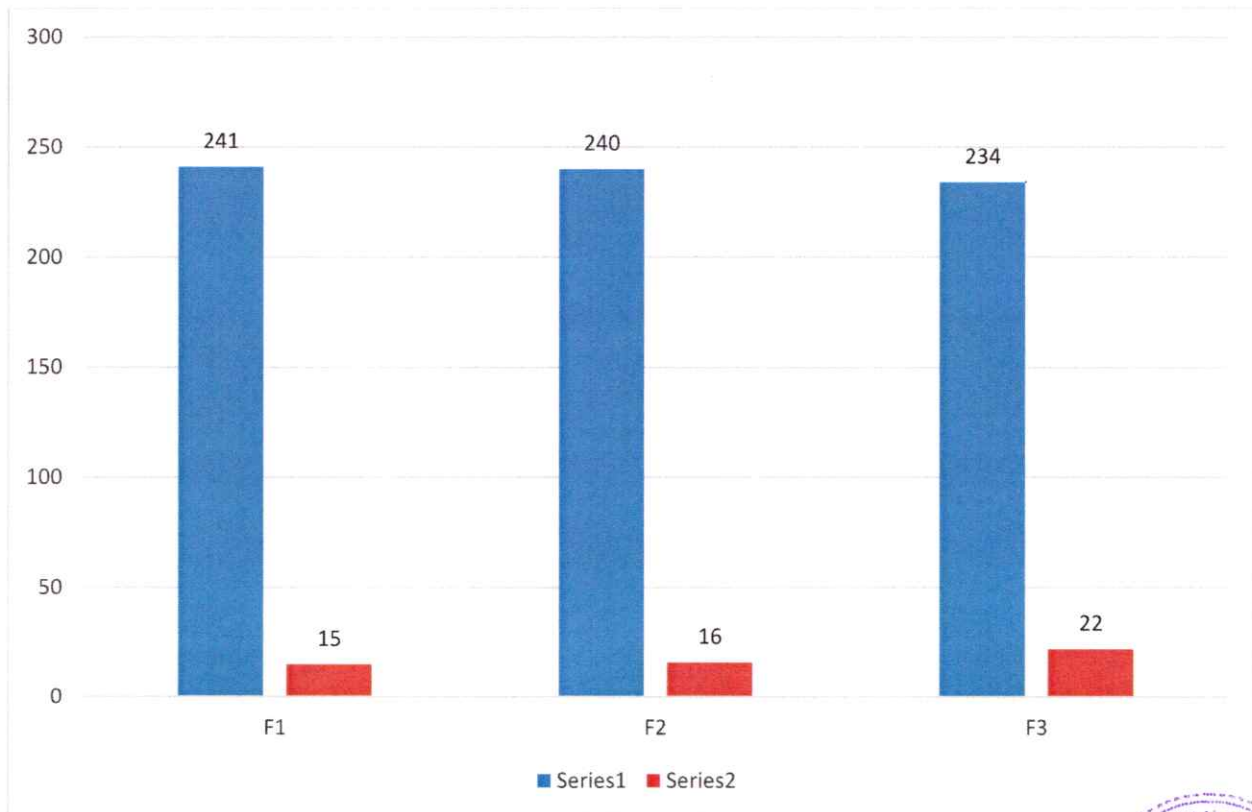


**ACCEPTANCE OF CURRICULUM AMONGST STUDENTS –**

1. F1: I found the curriculum easy and interesting
2. F2: The instructions given in the curriculum is easy to follow
3. F3: The syllabus has good balance between theory and practical exercises

	ACCEPTANCE		
	F1	F2	F3
Yes	241	240	234
No	15	16	22
Total Responses	256	256	256
Yes %	94	94	91
No %	6	6	9

94% of the respondents found the curriculum easy, which indicates that the curriculum is designed well according to the aptitude level of the students at large. 94% of the respondents found it easy to follow the instructions given in the curriculum. However, 9% of the students felt the need for some adjustment between theory and practical activities.



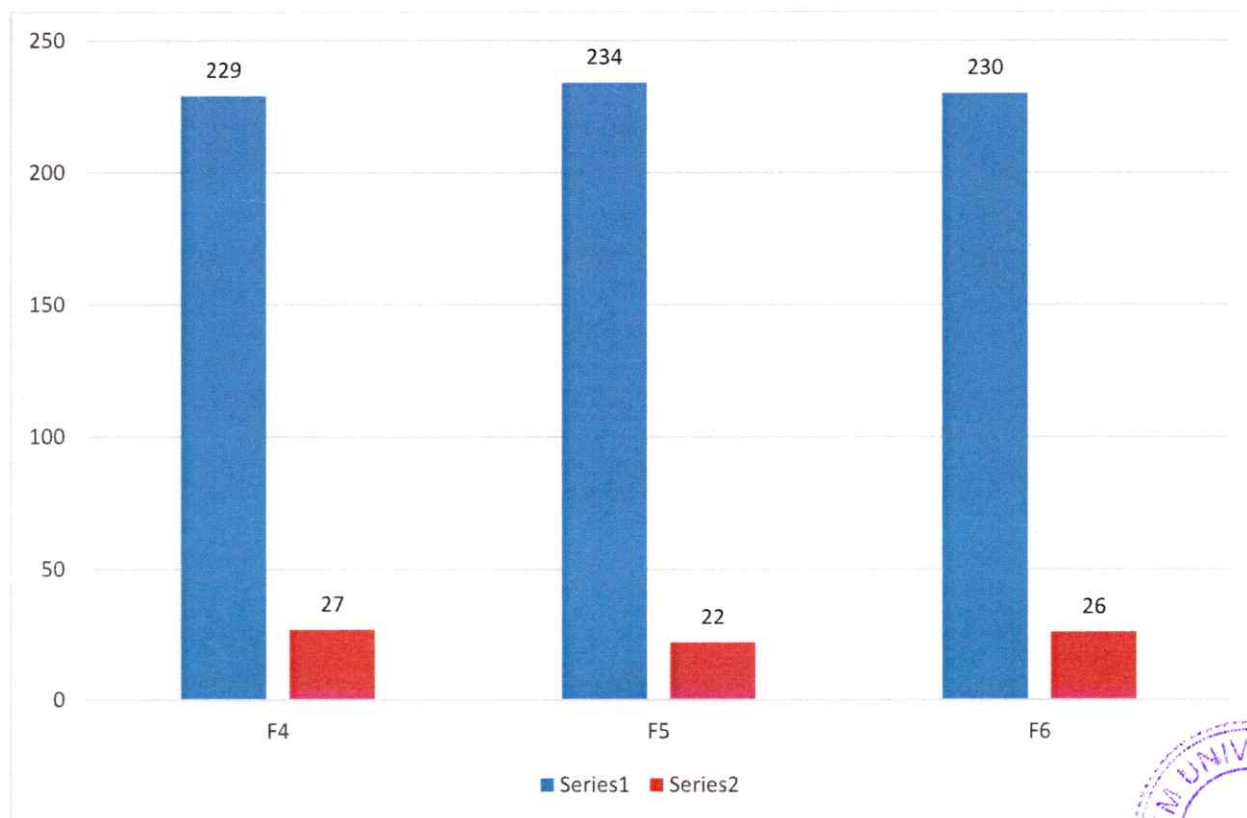
### PERCEIVED RELEVANCE OF THE CURRICULUM –

4. F4: The subjects are relevant to my future job aspirations
5. F5: The subjects are very practical and seems applicable in daily life
6. F6: The course has helped me develop my personality

PERCEIVED RELEVANCE			
	F4	F5	F6
Yes	229	234	230
No	27	22	26
Total Responses	256	256	256
Yes %	89	91	90
No %	11	9	10

91% respondents found the subjects practical and having application in real life. However, 11% of the respondents felt the subjects having limited relevance for their personal job aspirations.

While responses reflect the acceptance, usefulness and contemporary nature of the curriculum at the university; it also highlights the areas for further improvement.

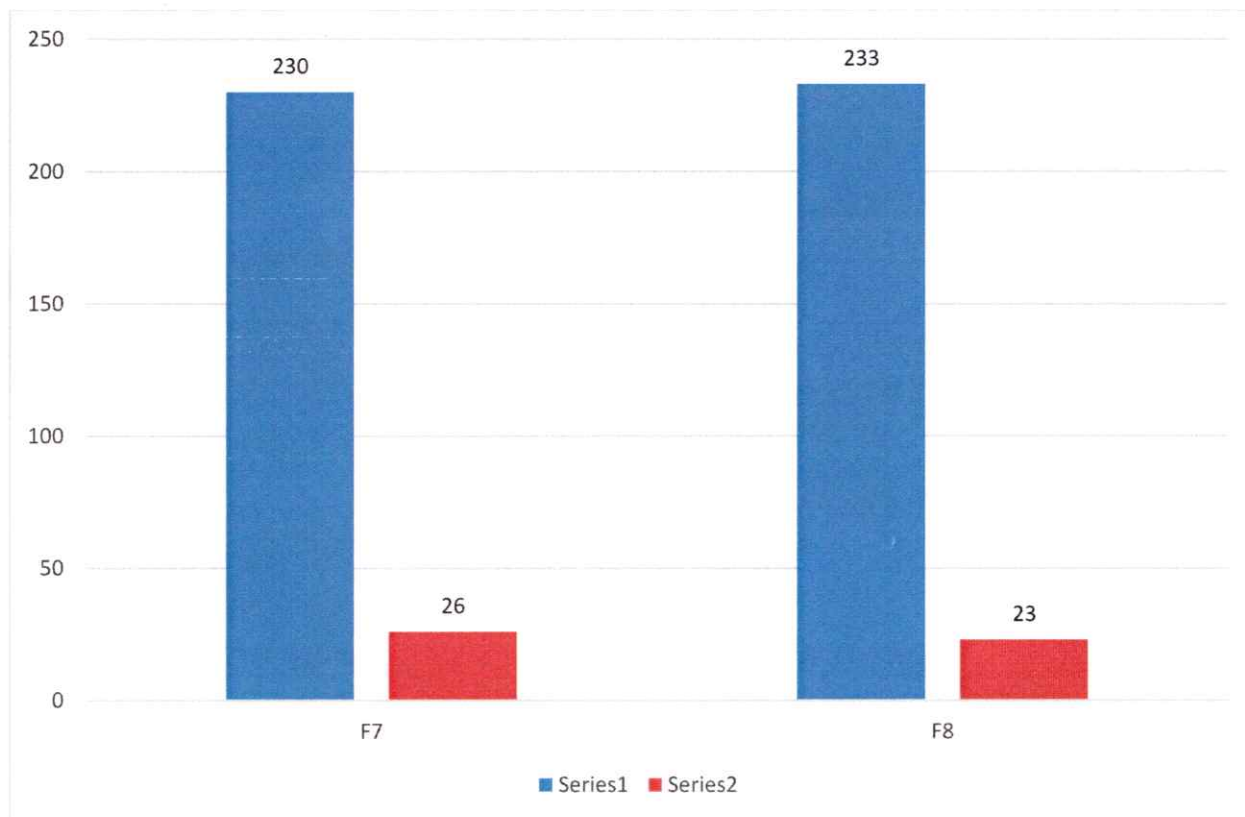


**SUPPORT MATERIAL FOR SUBJECTS (CURRICULUM) –**

- 7. F7: The reading material and references of the subject are easily available
- 8. F8: Course content is followed by corresponding reference materials?
- 9. F9: What other changes would you like to suggest improving the curriculum / course?

	SUPPORT MATERIAL	
	F7	F8
Yes	230	233
No	26	23
<b>Total Responses</b>	<b>256</b>	<b>256</b>
Yes %	90	91
No %	10	9

While, 91% of the respondents opined that they were provided with the reference material, 90% of the students shared that the required reading material is ubiquitously available.



**\*\*\* LAST PAGE OF THE REPORT \*\*\***





आईएफटीएम विश्वविद्यालय, मुरादाबाद, उत्तर प्रदेश  
**IFTM University, Moradabad, Uttar Pradesh**  
NAAC ACCREDITED

**TEACHERS' FEEDBACK REPORT**  
**SCHOOL OF ENGINEERING & TECHNOLOGY**  
**2022-23**

## RESEARCH METHODOLOGY

<b>Data Type:</b>	Primary
<b>Data Collection Tool:</b>	Survey (Online)
<b>Sample Size:</b>	67
<b>Sample Frame:</b>	Teachers teaching at IFTM University in 2022-23 in School of Engineering & Technology
<b>Sampling:</b>	Probability Sampling
<b>Questionnaire:</b>	5-point Likert scale (Strongly Disagree – 1, Disagree – 2, Neither Agree Nor Disagree – 3, Agree – 4, Strongly Agree - 5)



Teachers are the backbone of any academic institute. No academic institute can thrive, unless its faculty is not satisfied. In its pursuit of excellence, IQAC at IFTM University conducts a teacher's survey every year; to learn about any scope of improvement in its functioning.

The survey attempted to capture the satisfaction level of teachers in reference to the following 6 areas viz.

- a. *Curriculum / Syllabus*
- b. *Examination & Evaluation*
- c. *Facilities*
- d. *Course Content & Books*
- e. *Freedom*
- f. *Friendly & Favorable Environment*

Performance in these areas gets measured through responses given to specific questions (factors) in the questionnaire (Teachers' Feedback Survey). In 2022-23, 67 faculty members participated in the survey from School of Engineering & Technology. The findings of the survey 2022-23 on the above mentioned 6 areas are presented in the following section.



## CURRICULUM / SYLLABUS

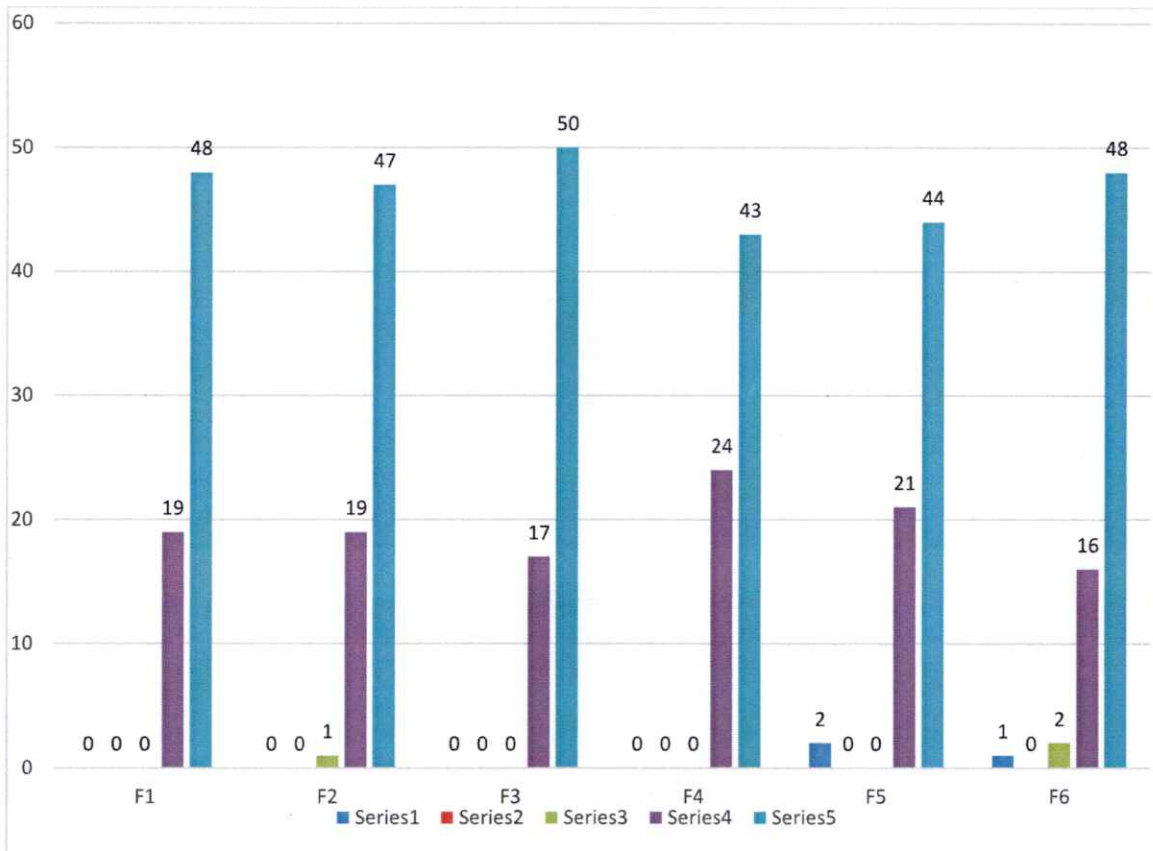
The curriculum is the road map for a student. If well designed, it helps them embark upon the journey of personal joy and professional success.

1. F1: Syllabus is suitable to the course.
2. F2: Syllabus is need based.
3. F3: Aims and objectives of the syllabi are well defined and clear to teachers and students.
4. F4: The course/syllabus has good balance between theory and application.
5. F5: The course/syllabus has made me interested in the subject area.
6. F6: The course/syllabus of this subject increased my knowledge and perspective in the subject area.

SYLLABUS / CURRICULUM							
	F1	F2	F3	F4	F5	F6	Average Rating
1	0	0	0	0	2	1	5
2	0	0	0	0	0	0	
3	0	1	0	0	0	2	
4	19	19	17	24	21	16	
5	48	47	50	43	44	48	
Average Rating	5	5	5	5	5	5	
No. of Participants in the survey	67	67	67	67	67	67	
% of teachers satisfied	100	100	100	100	97	99	
% of teachers dissatisfied	0	0	0	0	3	1	







## EXAMINATION & EVALUATION

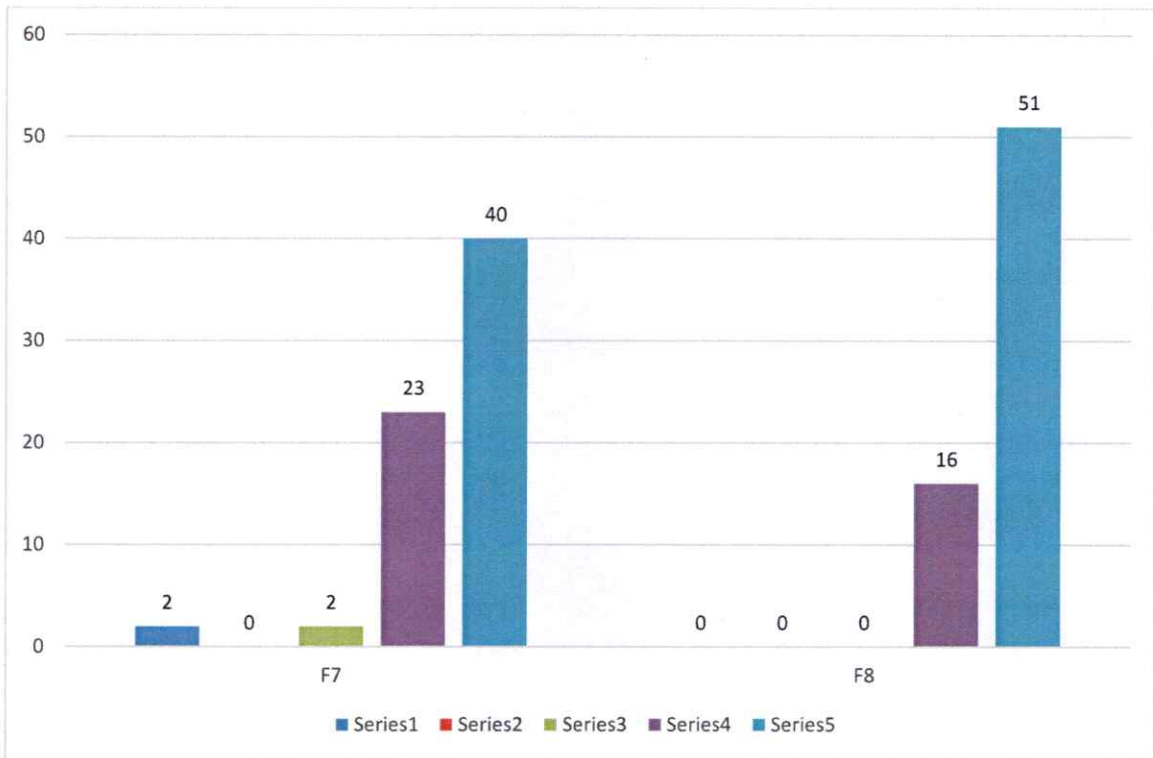
The examination and evaluation process at university is rigorous and conducive to the development of its students.

1. F7: The course/ programme of studies carries sufficient number of optional papers.
2. F8: Tests and examinations are conducted well in time with proper coverage of all units in the syllabus.

Of all the 67 respondents, everyone agreed that the examinations are conducted well on time and covers the entire syllabus. 97% faculty members opined that courses have ample number of optional papers.

EXAMINATION & EVALUATION			
	F7	F8	Average Rating
1	2	0	5
2	0	0	
3	2	0	
4	23	16	
5	40	51	
Average Rating	4	5	
No. of Participants in the survey	67	67	
% of teachers satisfied	97	100	
% of teachers dissatisfied	3	0	





## FACILITIES

The University also believes that basic amenities like hygienic washrooms, a neat personal space to work, and reading room are essential to a teacher.

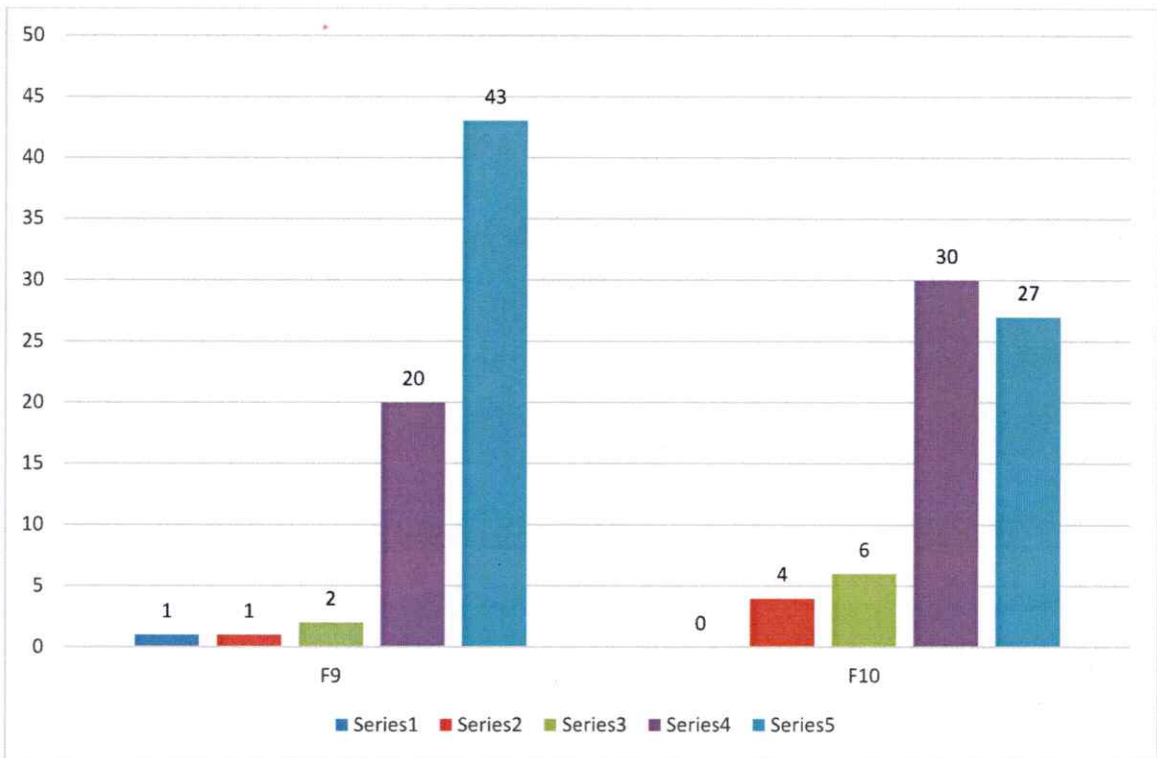
1. F9: Infrastructural facilities, such as teacher's rooms/carrels, class rooms, reading rooms and toilets are available in the Department.
2. F10: Staff canteen is available at the faculty level.

FACILITIES			
	F9	F10	Average Rating
1	1	0	4
2	1	4	
3	2	6	
4	20	30	
5	43	27	
Average Rating	5	4	
No. of Participants in the survey	67	67	
% of teachers satisfied	97	94	
% of teachers dissatisfied	3	6	

While 97% of the faculty members were found satisfied with various facilities and infrastructure meant for them; about 6% of the faculty members felt the need of a dedicated canteen at the department level.







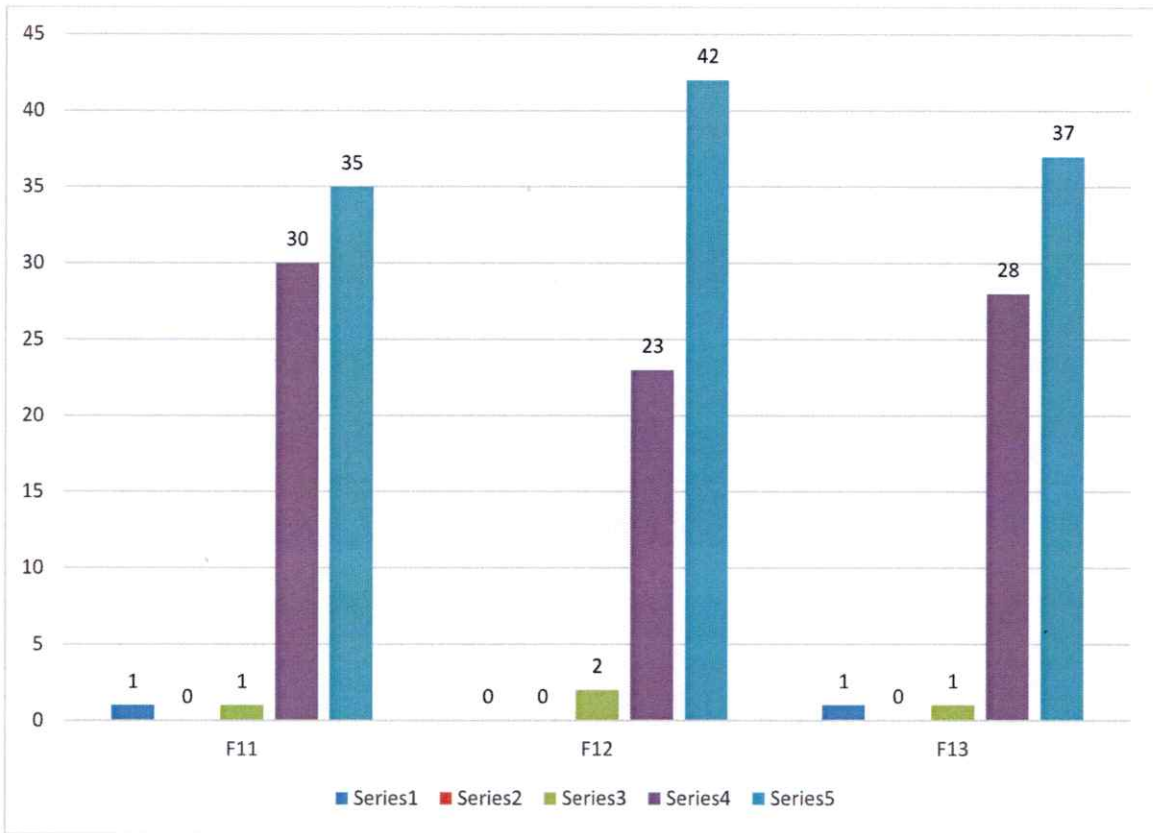
## COURSE CONTENT & BOOKS

Availability of reference material, books and other forms of literature is important not only for students but teachers too. The performance on course content and books was measured through following 3 factors:

1. F11: Course content is followed by corresponding reference materials.
2. F12: Sufficient number of prescribed books is available in the library.
3. F13: The books prescribed/ listed as reference materials are relevant, updated appropriate.

COURSE CONTENT & BOOKS				
	F11	F12	F13	Average Rating
1	1	0	1	5
2	0	0	0	
3	1	2	1	
4	30	23	28	
5	35	42	37	
Average Rating	4	5	4	
No. of Participants in the survey	67	67	67	
% of teachers satisfied	99	100	99	
% of teachers dissatisfied	1	0	1	





## FREEDOM

Freedom to bring novelty at work place, including in curriculum and pedagogy sans any reservations help an academician unleash his true potential. It not only benefits the academia but also enrich the experience of all the stake holders.

To measure performance in this area, responses were sought on the following factors –

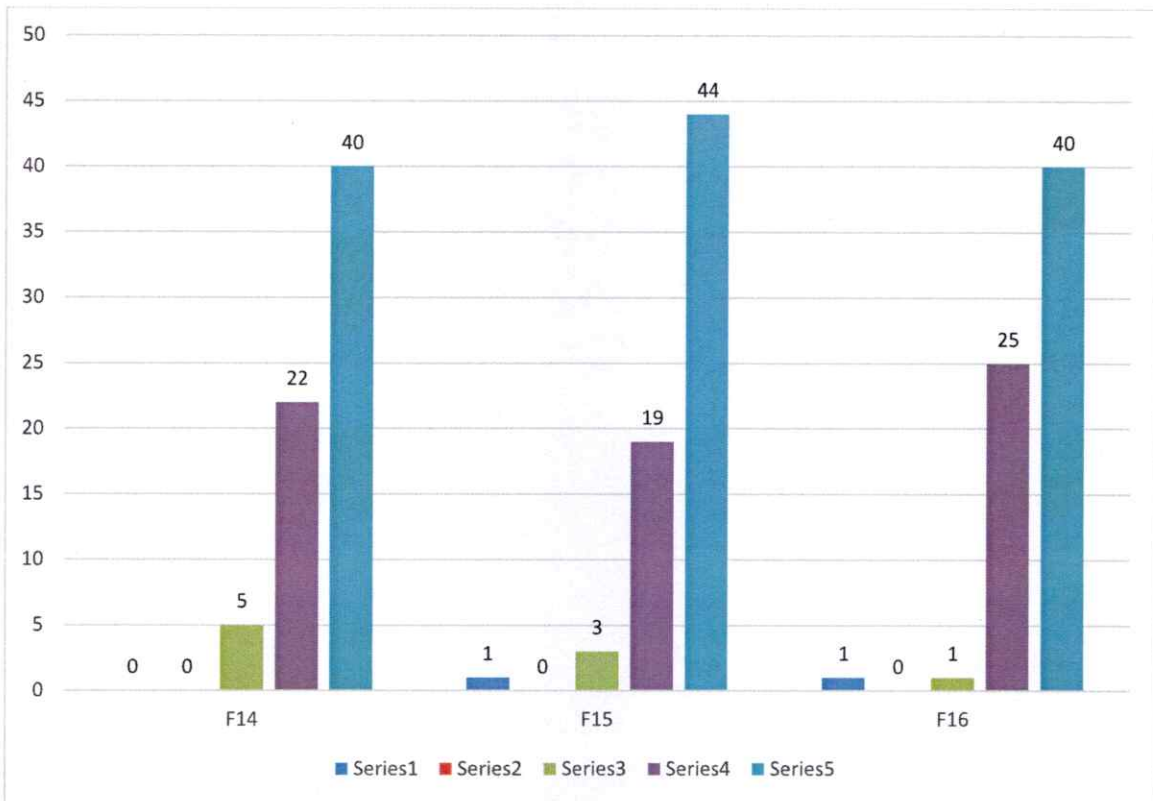
1. F14: I have the freedom to propose, modify, suggest and incorporate new topics in the syllabus.
2. F15: I have the freedom to adopt new techniques/strategies of teaching such as seminar presentations, group discussions and learners' participation.
3. F16: I have the freedom to adopt/adapt new techniques/strategies of testing and assessment of students.

Most of the respondents agreed that they have the required freedom to propose new topics in the syllabus. The respondents confirmed that they have the freedom to adopt new techniques of teaching. The teachers also confirmed that they have the freedom to use new methods of assessment in the class.

<b>FREEDOM</b>				
	<b>F14</b>	<b>F15</b>	<b>F16</b>	<b>Average Rating</b>
<b>1</b>	0	1	1	<b>5</b>
<b>2</b>	0	0	0	
<b>3</b>	5	3	1	
<b>4</b>	22	19	25	
<b>5</b>	40	44	40	
Average Rating	5	5	5	
No. of Participants in the survey	67	67	67	
% of teachers satisfied	100	99	99	
% of teachers dissatisfied	0	1	1	







## FRIENDLY & FAVOURABLE ENVIRONMENT

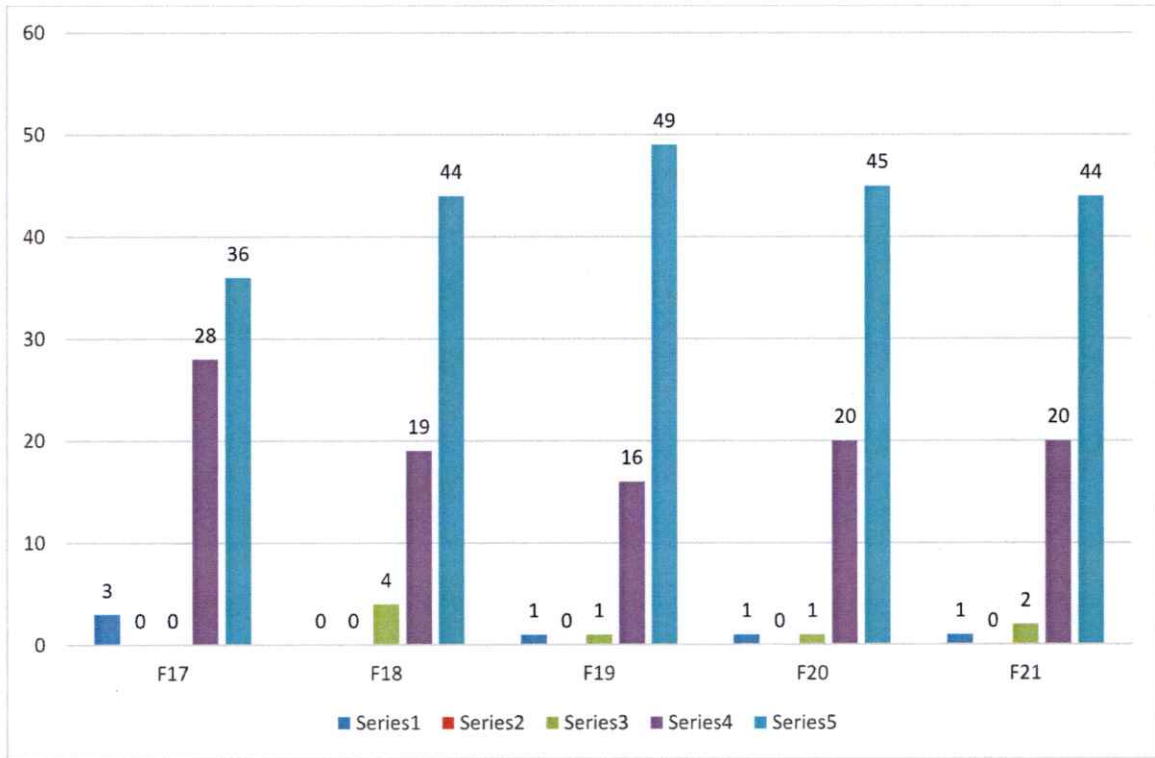
A friendly environment and favorable policies help faculty delivering their best. To measure the performance in this area, responses from faculty members were sought on the following factors –

1. F17: The environment in the department is conducive to teaching and research.
2. F18: The administration is teacher friendly.
3. F19: The University provides adequate and smooth support for projects and research facilities.
4. F20: The University provides adequate funding and support to faculty members for upgrading their skills and qualifications.
5. F21: Provisions for professional development are non-discriminatory and fair.

FRIENDLY & FAVOURABLE ENVIRONMENT						
	F17	F18	F19	F20	F21	Average Rating
1	3	0	1	1	1	5
2	0	0	0	0	0	
3	0	4	1	1	2	
4	28	19	16	20	20	
5	36	44	49	45	44	
Average Rating	4	5	5	5	5	
No. of Participants in the survey	67	67	67	67	67	
% of teachers satisfied	96	100	99	99	99	
% of teachers dissatisfied	4	0	1	1	1	

Most of the faculty members agreed that the environment at the University and its policies are very conducive for teaching and undertaking research projects. Almost every respondent agreed that the support they get from the administration has enabled them to perform their duties in a better manner.





\*\*\* LAST PAGE OF THE REPORT \*\*\*



आईएफटीएम विश्वविद्यालय, मुरादाबाद, उत्तर प्रदेश  
**IFTM University, Moradabad, Uttar Pradesh**  
NAAC ACCREDITED

**ALUMNI FEEDBACK REPORT**  
**SCHOOL OF ENGINEERING & TECHNOLOGY**  
**2022-23**



## RESEARCH METHODOLOGY

**Data Type:** Primary

**Data Collection Tool:** Survey (Online)

**Sample Size:** 78

**Sample Frame:** Individuals who have been student at IFTM University in School of Engineering and Technology

**Sampling:** Non Probability (Convenience Sampling)

**Questionnaire:** 5-point Likert scale (with 5 being most satisfied and 1 being least satisfied)

\* Scale with 5 points viz. *excellent, very good, good, average and poor* is interpreted and presented as satisfied and dissatisfied.

\*\* Responses excellent, very good and good are interpreted as *satisfied respondent* and responses average and poor are interpreted as dissatisfied.

Alumni of any institute or a university are the true reflections of the quality of services rendered there. They are the ones having the complete experience, and their suggestions are evenhanded and valuable.

To learn about any possible need for improvement, the University tries to connect with its alumni every year. An online survey is administered to get their feedback, improve its functioning and fix any shortcoming if found.

The survey attempted to capture the satisfaction level of alumni in reference to the following 4 areas viz.

1. University Facilities & Overall Infrastructure
2. Grievances, Facilities & Academic Initiatives
3. Educational Objectives of the Program
4. Feedback about Training & Placement Cell

Performance in these areas gets measured through responses given to specific questions (factors) in the questionnaire (Alumni Feedback Survey). In 2022-23, responses could be elicited from 78 alumni of School of Engineering & Technology.

#### **University Facilities & Overall Infrastructure:**

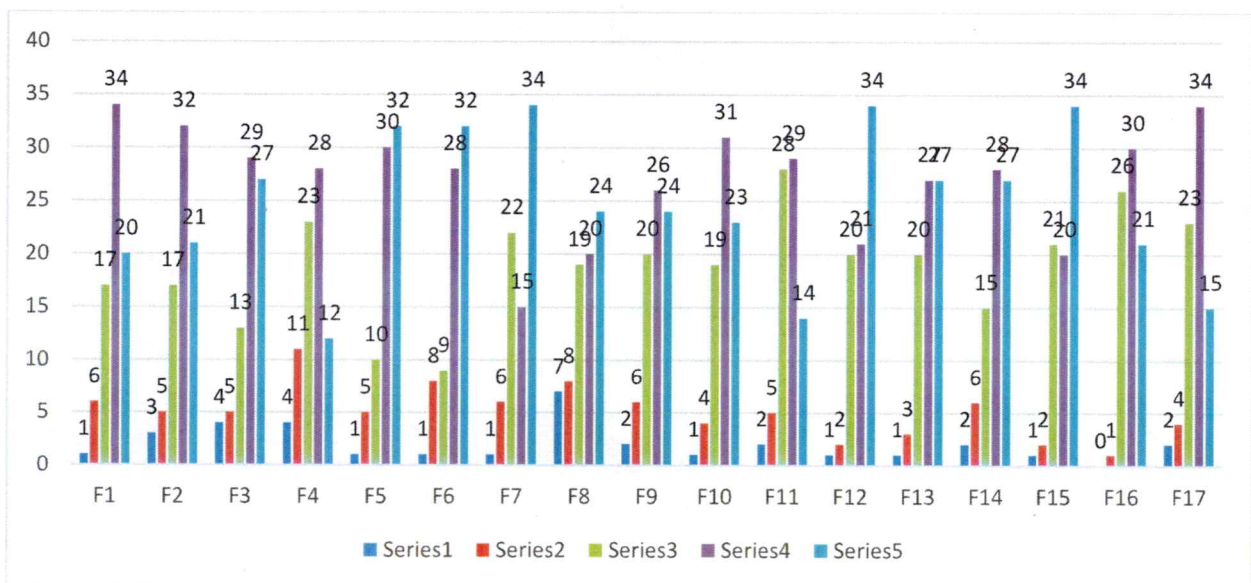
To evaluate the performance on this parameter, questions were asked in reference to 17 factors viz.

1. F1: Admission Procedure
2. F2: Fee structure
3. F3: Environment
4. F4: Infrastructure & Lab facilities
5. F5: Faculty
6. F6: Project Guidance
7. F7: Quality of support material
8. F8: Training & Placement
9. F9: Library
10. F10: Canteen Facilities
11. F11: Hostel Facilities
12. F12: Overall Rating of the University
13. F13: Alumni Association/Network of Old Friends
14. F14: Caliber of students passing out of this University
15. F15: Professional courses and their suitability to the Industry
16. F16: Learning experience in terms of their relevance to the real life application
17. F17: Significance of the course(s) that you learnt in relation to your current job

Out of 78 respondents, 92% were found satisfied with the faculty at the University. 12% of the respondents voiced their concern with the project guidance they received.

However, 19% of the respondents voiced their dissatisfaction with the Training and Placement Cell and the state of infrastructure at the department.

	Poor	Average	Good	Very Good	Excellent	Total Responses	Satisfied Percentage	Not Satisfied Percentage
F1	1	6	17	34	20	78	91	9
F2	3	5	17	32	21	78	90	10
F3	4	5	13	29	27	78	88	12
F4	4	11	23	28	12	78	81	19
F5	1	5	10	30	32	78	92	8
F6	1	8	9	28	32	78	88	12
F7	1	6	22	15	34	78	91	9
F8	7	8	19	20	24	78	81	19
F9	2	6	20	26	24	78	90	10
F10	1	4	19	31	23	78	94	6
F11	2	5	28	29	14	78	91	9
F12	1	2	20	21	34	78	96	4
F13	1	3	20	27	27	78	95	5
F14	2	6	15	28	27	78	90	10
F15	1	2	21	20	34	78	96	4
F16	0	1	26	30	21	78	99	1
F17	2	4	23	34	15	78	92	8





**Grievances, Facilities & Academic Initiatives:**

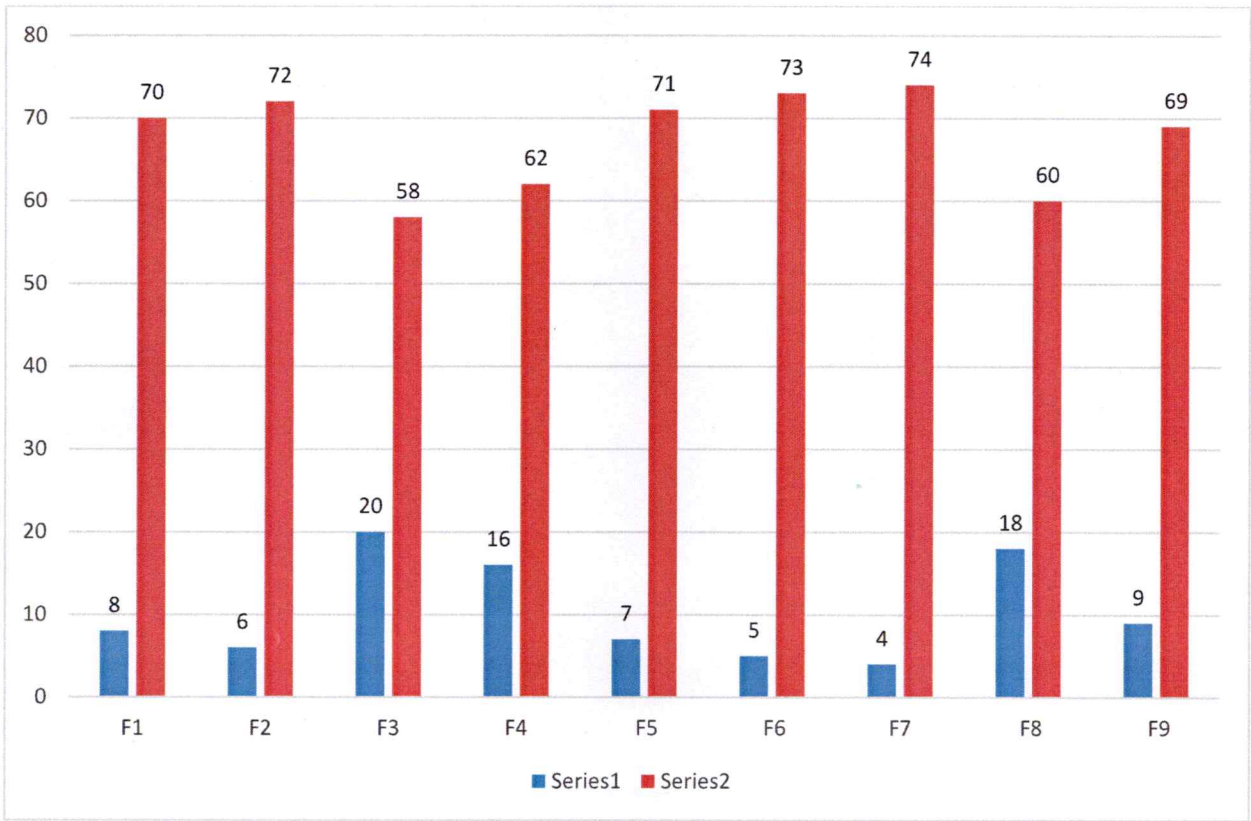
Responses were also sought to capture the opinion of alumni about the different aspects of the University including handling of grievances, adequacy of various facilities and academic initiatives being taken by the University. The factors / questions are as follows:

1. F1: Do you feel proud to be associated with IFTM University as an Alumnus?
2. F2: Would you like to join the Department/School Alumni Association?
3. F3: Have you participated in any Alumni meet as of now (organized by your parent department)?
4. F4: Are you willing to contribute to the development of the Department/School?
5. F5: Were your grievances properly handled at the Department/School/University? [As a student]
6. F6: Were your grievances properly handled at the Department/School/University? [As an Alumnus]
7. F7: Have you obtained sufficient know-how (both in theory and practice) at IFTMU?
8. F8: Is the education imparted at IFTMU useful and relevant in your present job?
9. F9: Were the Head of the Department & Teachers cooperative?

	No	Yes	Grand Total	Agreed Percentage	Disagreed Percentage
F1	8	70	78	90	10
F2	6	72	78	92	8
F3	20	58	78	74	26
F4	16	62	78	79	21
F5	7	71	78	91	9
F6	5	73	78	94	6
F7	4	74	78	95	5
F8	18	60	78	77	23
F9	9	69	78	88	12

The survey revealed that 26% of the respondents did not get to participate in the alumni meet organized by the university. 23% opined that the education imparted (curriculum) at the university did little to their present jobs. 21% of the respondents did not reflect their willingness to make any contribution to the department.

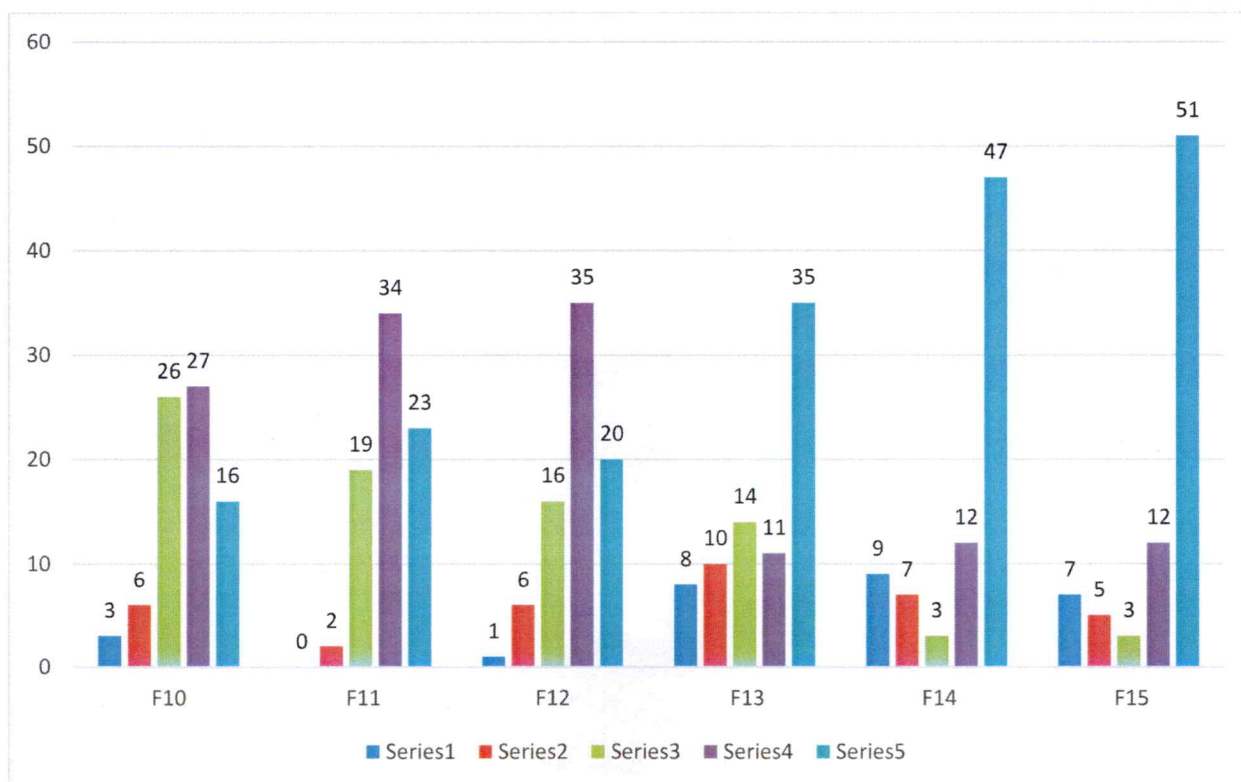




- 10. F10: Laboratories & Equipment's facilities
- 11. F11: Library/Seminar/Reading Room
- 12. F12: Computer Facilities
- 13. F13: Internet & Wi-Fi
- 14. F14: Sports and Cultural
- 15. F15: Classrooms

	Poor	Average	Good	Very Good	Excellent	Grand Total	Satisfied Percentage	Not Satisfied Percentage
F10	3	6	26	27	16	78	88	12
F11	0	2	19	34	23	78	97	3
F12	1	6	16	35	20	78	91	9
F13	8	10	14	11	35	78	77	23
F14	9	7	3	12	47	78	79	21
F15	7	5	3	12	51	78	85	15

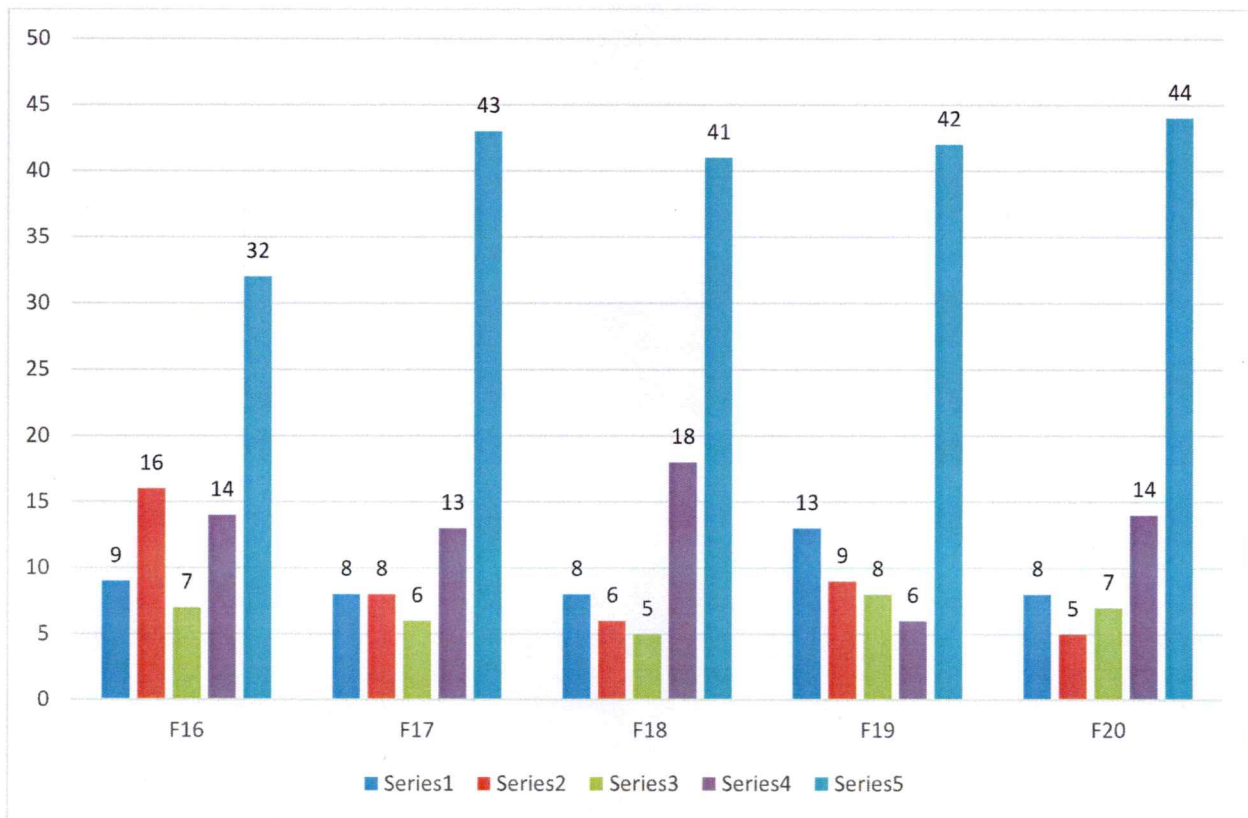
The adequacy of different facilities being provided to the students at the University was also checked. 23% of the erstwhile students were found dissatisfied with the internet services at the university. 21% of the students reflected their dissatisfaction with the sports and cultural events of the department.



- 16. F16: Industry Oriented Projects (if applicable)
- 17. F17: Seminars & Workshop
- 18. F18: Guest Lectures
- 19. F19: Special Training Classes for bridging Industry/Academic gap
- 20. F20: Student Development Activities organized by the University

	Poor	Average	Good	Very Good	Excellent	Grand Total	Satisfied %	Not Satisfied %
F16	9	16	7	14	32	78	68	32
F17	8	8	6	13	43	78	79	21
F18	8	6	5	18	41	78	82	18
F19	13	9	8	6	42	78	72	28
F20	8	5	7	14	44	78	83	17

The University undertakes many academic initiatives for the holistic development of its students and the survey also included the questions to capture the opinion of the alumni in this regard. 32% of the respondents were not satisfied with the industry projects they got as students. 28% shared their dissent with the special training classes organized for them. As per the survey, the seminars and workshops organized by the department did not add much value to the students.





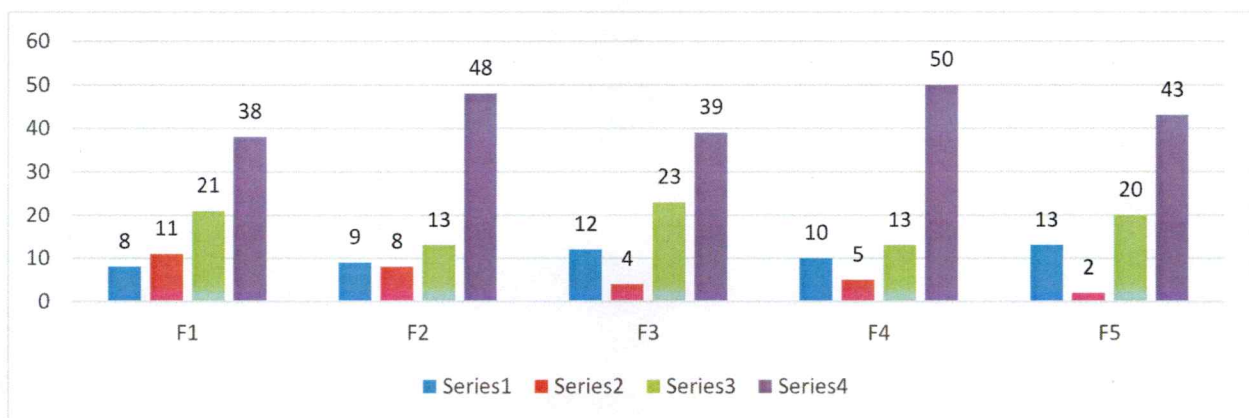
### Regarding Program Educational Objectives:

To evaluate the performance on this parameter, questions were asked in reference to 5 factors viz.

1. F1: Preparation: To educate students for graduate and postgraduate programs and to help them succeed in their chosen/ related fields.
2. F2: Core Competence: To provide students with sound knowledge in their chosen area.
3. F3: Breadth: To train students with knowledge relating to an array of professional fields undertaken so as to comprehend, analyze, design, and create innovative products and find solutions to improve the quality of life
4. F4: Professionalism: To create professionally superior and ethically strong global manpower and to uphold moral values. With effective communication skills, teamwork skills, multidisciplinary approach, and an ability to improve the quality of life.
5. F5: Learning Environment: To create an intellectual environment for research and development aware of emerging technologies leading to continual learning needed for a successful professional career, to create a center of excellence develop technocrats and business leaders.

15% respondents felt that the University should put in more effort to help students build innovative solutions to the problems facing human.

	Very Little	Quite a Bit	Some Extent	Very Much	Total Responses	Satisfied Percentage	Not Satisfied Percentage
F1	8	11	21	38	78	90	10
F2	9	8	13	48	78	88	12
F3	12	4	23	39	78	85	15
F4	10	5	13	50	78	87	13
F5	13	2	20	43	78	83	17

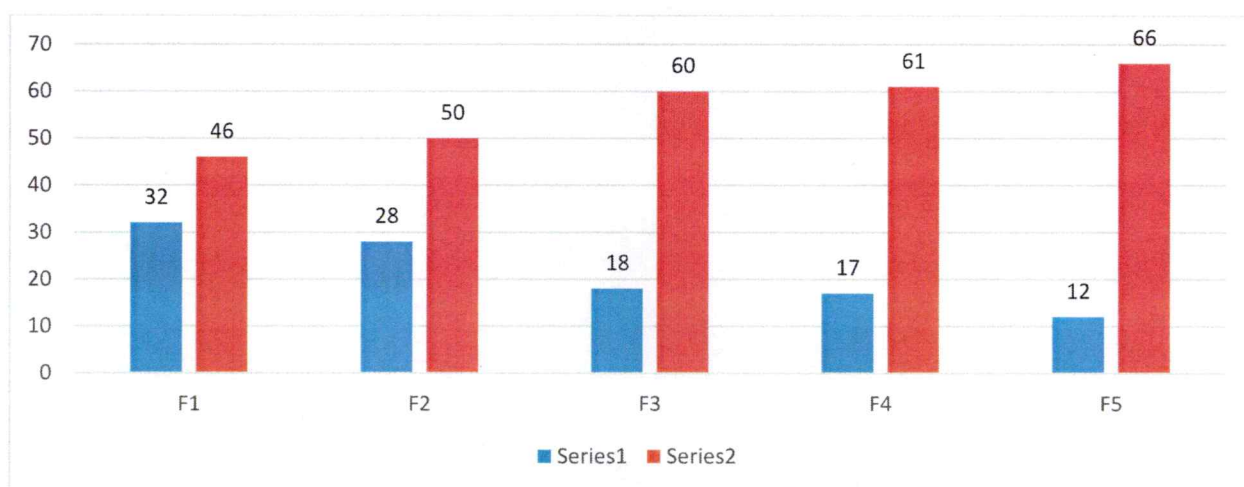


### Feedback about Training & Placement Cell:

1. F1: Has the Training & Placement (T&P) Cell provided ample on campus placement opportunities?
2. F2: Has the Placement Cell provided sufficient off campus placement opportunities?
3. F3: Did you ever avail Career counseling and guidance for higher studies from Placement Cell?
4. F4: If you are invited to deliver a Guest Lecture/a Special Talk/a Motivational Session for your juniors, will you be interested?
5. F5: Do you receive communications from the University/parent department through Mails/ Calls/SMS etc?

	No	Yes	Grand Total	Agreed Percentage	Disagreed Percentage
F1	32	46	78	59	41
F2	28	50	78	64	36
F3	18	60	78	77	23
F4	17	61	78	78	22
F5	12	66	78	85	15

23% respondents opined that career guidance was expected by them for their progression. 41% of the students were found discontented with the performance of Training and Placement Cell of the University.



\*\*\* LAST PAGE OF THE REPORT \*\*\*





आईएफटीएम विश्वविद्यालय, मुरादाबाद, उत्तर प्रदेश  
**IFTM University, Moradabad, Uttar Pradesh**  
NAAC ACCREDITED

**EMPLOYERS' FEEDBACK REPORT**  
**SCHOOL OF ENGINEERING & TECHNOLOGY**  
**2022-23**

## RESEARCH METHODOLOGY

<b>Data Type:</b>	Primary
<b>Data Collection Tool:</b>	Survey (Online)
<b>Sample Size:</b>	26
<b>Sample Frame:</b>	Business Organizations provided employment to students of IFTM University from School of Engineering & Technology
<b>Sampling:</b>	Non Probability
<b>Questionnaire:</b>	5-point Likert scale (with 5 being most satisfied and 1 being least satisfied)



Making student employable is one of the most important outcomes of all the efforts an academic institute puts in. At IFTM University, the faculty works very closely with the students in helping them develop the required skills and competencies. To stay on course, the university conducts an employers' survey and seek their opinion about the students placed with them. This feedback from the corporate helps us make necessary adjustments to our way of working and guides the future course of action.

The responses from the employer are sought in the following 6 areas viz.

1. Group Behavior & Soft Skills
2. Technical Skills
3. Creative & Innovation
4. Functional Competency
5. Leadership Skills
6. Employers' Satisfaction & Future Intention

Performance in these areas gets measured through responses given to specific questions (factors) in the questionnaire (Employers' Survey). In 2022-23, 26 recruiters responded to the survey. The findings of the survey 2022-23 on the above mentioned 6 areas are presented in the following section.



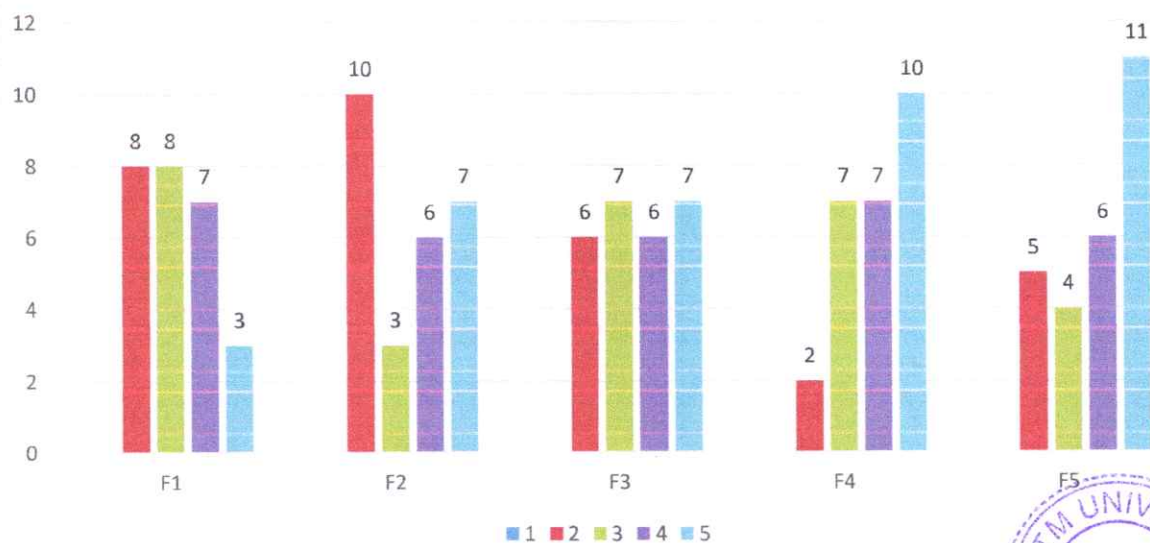
## GROUP BEHAVIOUR & SOFT SKILLS

Amongst the many factors of success in corporate, is group behavior and soft skills. Individuals, who fail to foster good professional relationships at work place, fail to succeed. Alongside good communication skills individuals are expected to be self-motivated and self-driven. In contemporary world, students are expected to be good team players and one with high social quotient. The performance on this parameter was measured through following 5 factors -

- a. F1: General Communication Skills
- b. F2: Self-motivated and taking on appropriate level of responsibility
- c. F3: Involvement in social activities
- d. F4: Relationship with seniors/peers/subordinates
- e. F5: Working as part of a team

26 employers responded to the survey and quite many of them found the students' communication skills, less than satisfactory. 38% of the employers opined that students need to be self driven and have motivation.

GROUP BEHAVIOUR & SOFT SKILLS							
	1	2	3	4	5	Satisfied %	Dissatisfied %
F1	0	8	8	7	3	69	31
F2	0	10	3	6	7	62	38
F3	0	6	7	6	7	77	23
F4	0	2	7	7	10	92	8
F5	0	5	4	6	11	81	19





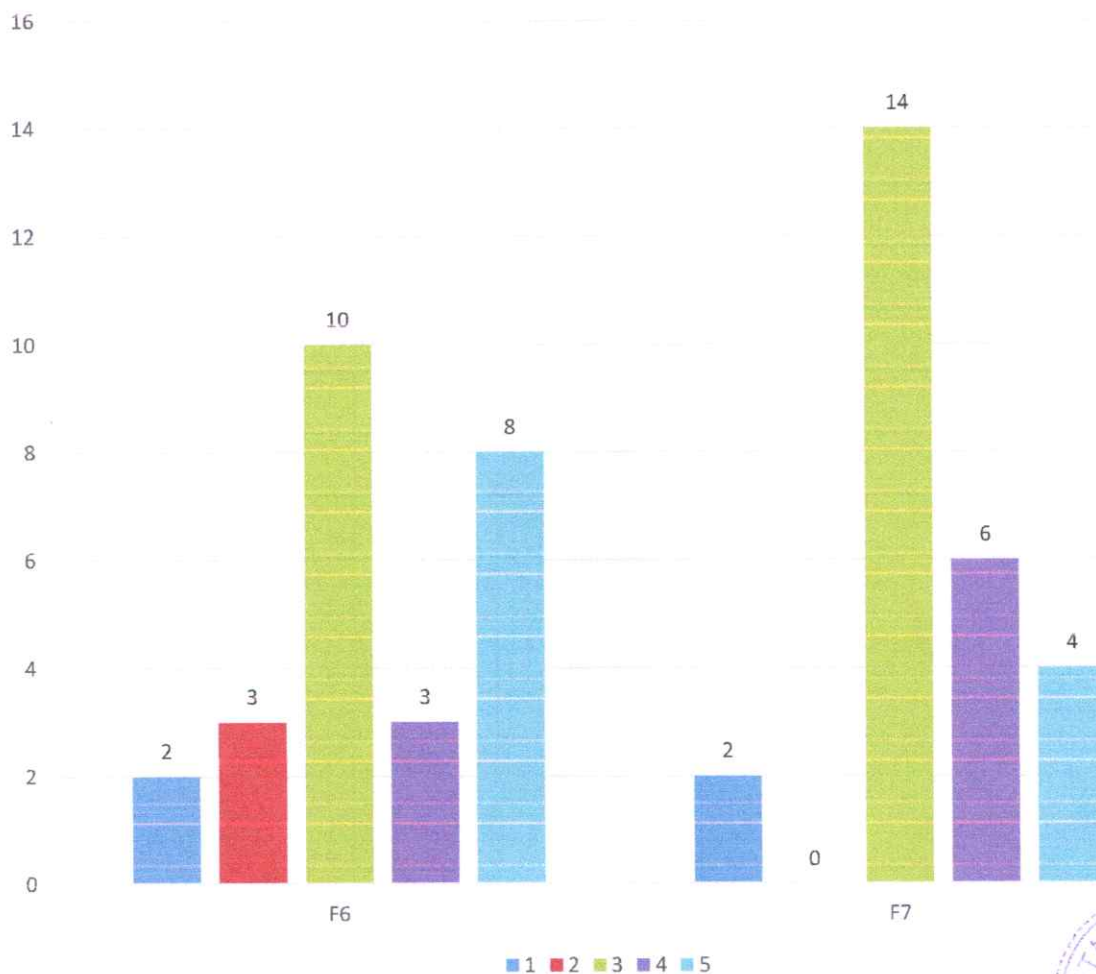
## TECHNICAL SKILLS

The managers shared their observation about the technical competencies of the students they recruited from the university. The performance on this parameter was measured through various factors viz.

- a. F6: Technical knowledge/skill
- b. F7: Using technology and workplace equipment.

Reporting managers felt that students have good understanding about latest technologies and platforms.

TECHNICAL SKILLS							
	1	2	3	4	5	Satisfied %	Dissatisfied %
F6	2	3	10	3	8	81	19
F7	2	0	14	6	4	92	8





## CREATIVE & INNOVATIVE

Novelty in ideas is a much-desired trait in these turbulent times with unprecedented challenges. The students who joined the industry were evaluated with the help of following factors.

- a. F8: Creative in response to workplace challenges
- b. F9: Developing practical solutions to work place problems
- c. F10: Open to new ideas and learning new techniques
- d. F11: Innovativeness and creativity

Most of the employers found the new recruits as above par and their performance satisfactory. However, many lacked the practical solutions to work place problems and were not open to new ideas and learning.

CREATIVE & INNOVATIVE							
	1	2	3	4	5	Satisfied %	Dissatisfied %
<b>F8</b>	1	4	14	1	6	81	19
<b>F9</b>	0	9	9	4	4	65	35
<b>F10</b>	0	10	6	4	6	62	38
<b>F11</b>	0	8	8	6	4	69	31

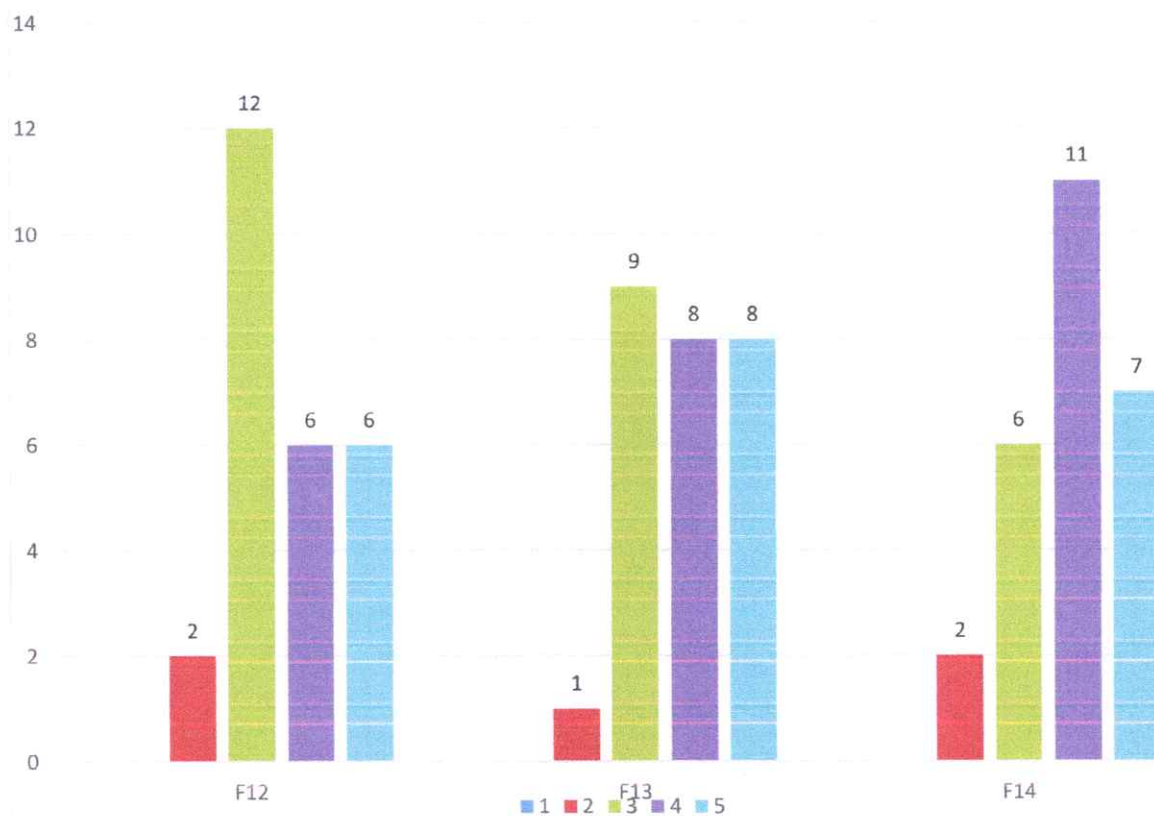


## FUNCTIONAL COMPETENCY

The functional competency of the newly inducted professionals was found above par. Employers felt that the students were well prepared, mentally for the demands of the industry. They found the recruited students were willing to take up extra responsibility and work outside the scheduled hours.

- a. F12: Ability to take up extra responsibility.
- b. F13: Ability to contribute to the goal of the organization
- c. F14: Obligation to work beyond schedule if required

FUNCTIONAL COMPETENCY							
	1	2	3	4	5	Satisfied %	Dissatisfied %
F12	0	2	12	6	6	92	8
F13	0	1	9	8	8	96	4
F14	0	2	6	11	7	92	8



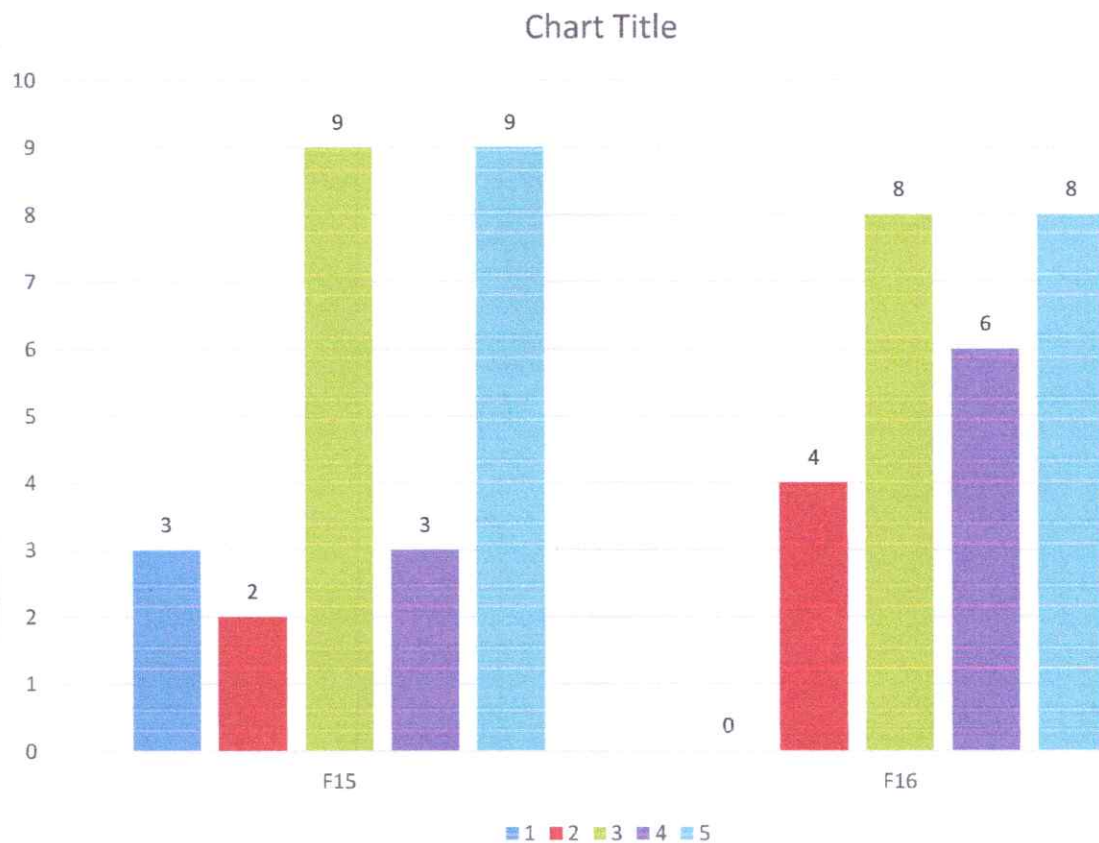
## LEADERSHIP SKILLS

The leadership skill is an inevitable requirement for a modern professional, irrespective of their domain. In the survey it was found that the students need to develop more of them to sustain in a highly competitive environment.

- a. F15: Ability to manage/leadership qualities
- b. F16: Their planning and organization skills

Most of the respondents found the new recruits demonstrating leadership qualities at work place and were happy about the planning and organization skills demonstrated by the recruited students.

LEADERSHIP SKILLS							
	1	2	3	4	5	Satisfied %	Dissatisfied %
F15	3	2	9	3	9	81	19
F16	0	4	8	6	8	85	15





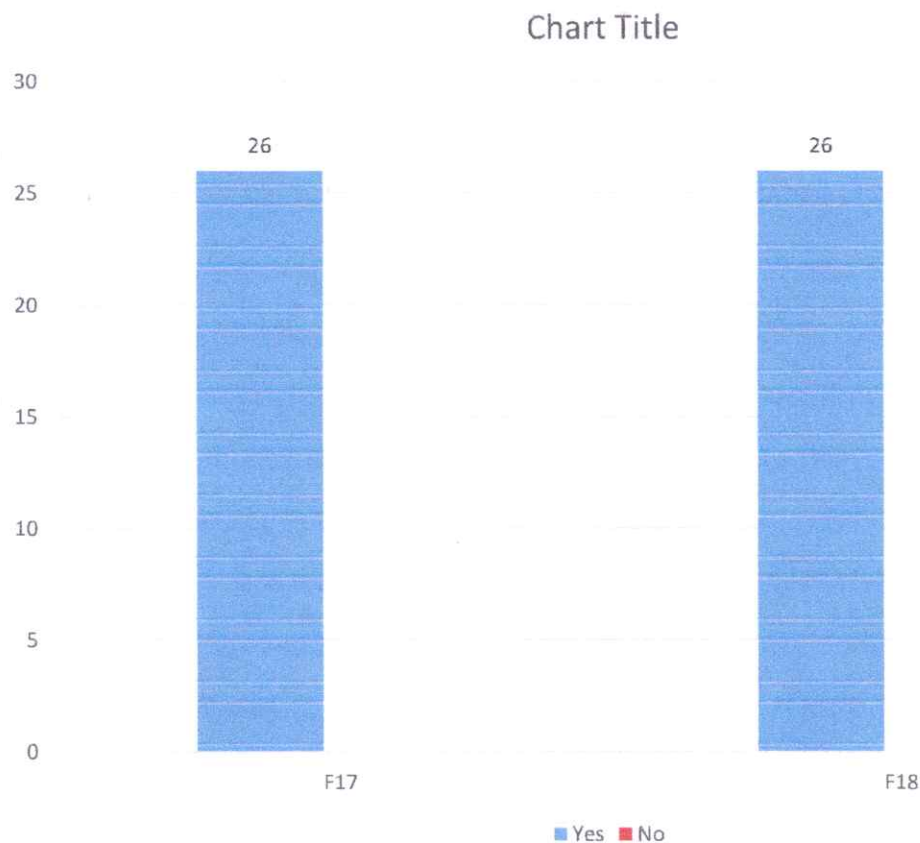
## EMPLOYERS' SATISFACTION & FUTURE INTENTION

The survey revealed that employers have strong preference for IFTM University and its students for their future campus drives. All of them were found to have plans for doing campus drives in future too.

To measure performance in this area, responses were sought on the following factors –

- a. F17: Would you like to recruit more students from IFTMU?
- b. F18: Would you refer us to other organization(s)?

EMPLOYERS' SATISFACTION & FUTURE INTENTION				
	Yes	No	Satisfied %	Dissatisfied %
<b>F17</b>	26	0	100	0
<b>F18</b>	26	0	100	0



\*\*\* LAST PAGE OF THE REPORT \*\*\*