



आईएफटीएम विश्वविद्यालय, मुरादाबाद, उत्तर प्रदेश  
**IFTM University, Moradabad, Uttar Pradesh**  
NAAC ACCREDITED

**CURRICULUM FEEDBACK REPORT**  
**SCHOOL OF PHARMACEUTICAL SCIENCES**  
**2022-23**

## RESEARCH METHODOLOGY

<b>Data Type:</b>	Primary
<b>Data Collection Tool:</b>	Survey (Online)
<b>Sample Size:</b>	102
<b>Sample Frame:</b>	Students of IFTM University studying in 2022-23 in School of Pharmaceutical Sciences
<b>Sampling:</b>	Probability Sampling
<b>Questionnaire:</b>	5-point Likert scale (with 5 being most satisfied and 1 being least satisfied)



Curriculum adopted by a University provides not only a structure for teaching; instead it's a measurable plan. It helps quantify the efforts being put by all the stake holders of the ecosystem. Its acceptance amongst all the stakeholders and suitability is a pre requisite to the ultimate purpose of learning and development, at the University.

To bridge any gap between the expectations and the perception in regards to the curriculum, an annual survey is conducted for all the key stakeholders' viz. students, teachers, alumni and employers.



# **SECTION – STUDENTS**

For students, the questionnaire captured responses on 3 themes viz.:

1. Acceptance of curriculum amongst students
2. Perceived relevance of the curriculum
3. Availability and acceptance of support material for subjects (curriculum)

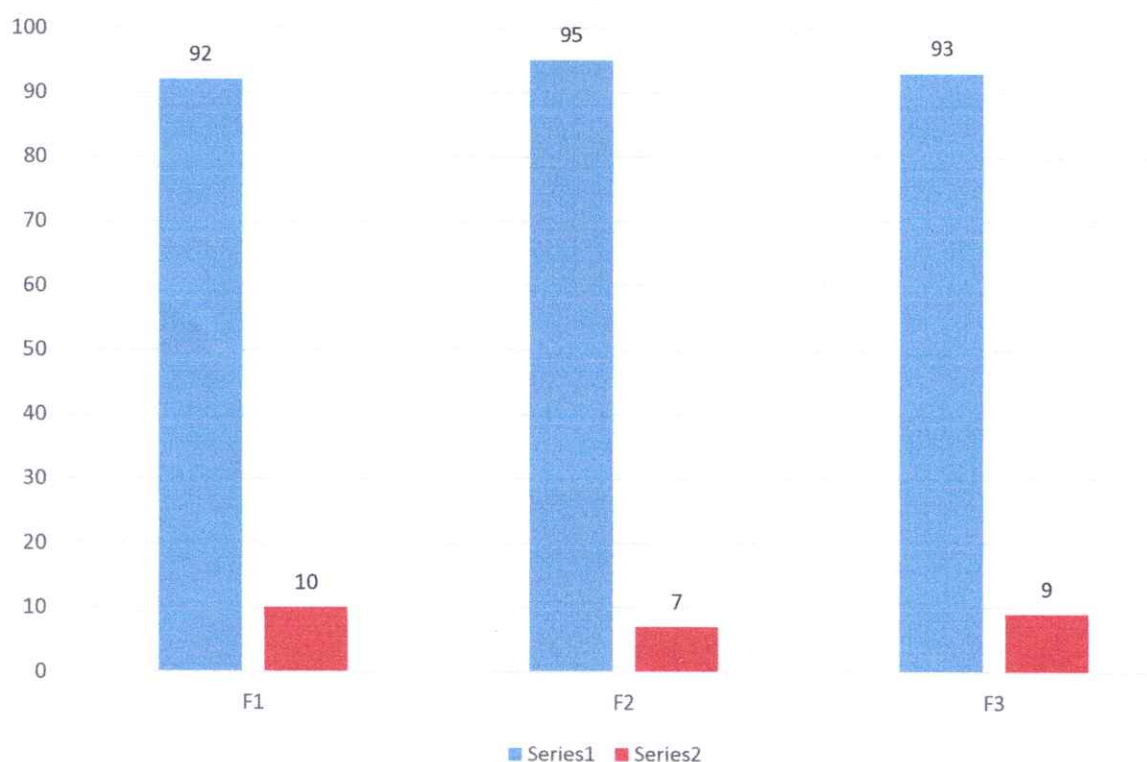


## ACCEPTANCE OF CURRICULUM AMONGST STUDENTS –

1. F1: I found the curriculum easy and interesting
2. F2: The instructions given in the curriculum is easy to follow
3. F3: The syllabus has good balance between theory and practical exercises

	ACCEPTANCE		
	F1	F2	F3
Yes	92	95	93
No	10	7	9
Total Responses	102	102	102
Yes %	90	93	91
No %	10	7	9

90% of the respondents found the curriculum easy, which indicates that the curriculum is designed well according to the aptitude level of the students at large. 93% of the respondents found it easy to follow the instructions given in the curriculum.



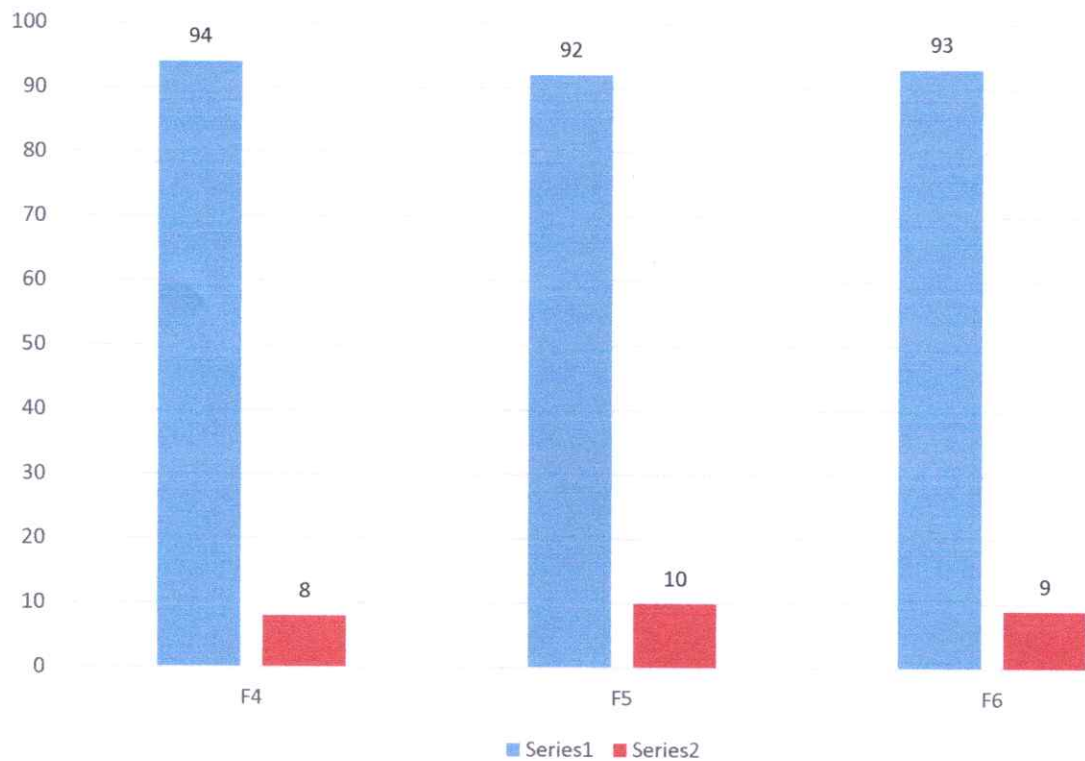
**PERCEIVED RELEVANCE OF THE CURRICULUM –**

- 4. F4: The subjects are relevant to my future job aspirations
- 5. F5: The subjects are very practical and seems applicable in daily life
- 6. F6: The course has helped me develop my personality

	PERCEIVED RELEVANCE		
	F4	F5	F6
Yes	94	92	93
No	8	10	9
Total Responses	102	102	102
Yes %	92	90	91
No %	8	10	9

90% respondents found the subjects practical and having application in real life. 92% of the students found the subjects relevant according to their future job aspirations.

While responses reflect the acceptance, usefulness and contemporary nature of the curriculum at the university; it also highlights the areas for further improvement.

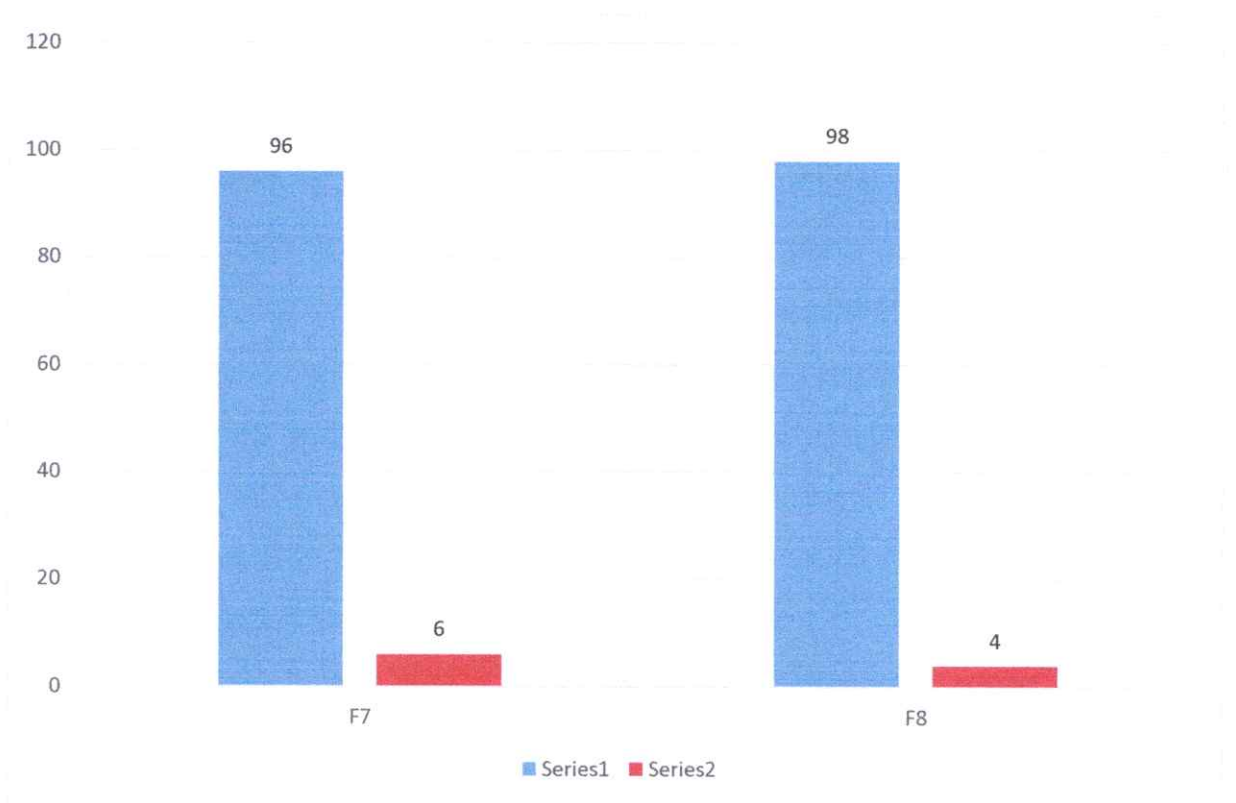


**SUPPORT MATERIAL FOR SUBJECTS (CURRICULUM) –**

- 7. F7: The reading material and references of the subject are easily available
- 8. F8: Course content is followed by corresponding reference materials?
- 9. F9: What other changes would you like to suggest improving the curriculum / course?

	SUPPORT MATERIAL	
	F7	F8
Yes	96	98
No	6	4
Total Responses	102	102
Yes %	94	96
No %	6	4

While, 96% of the respondents opined that they were provided with the reference material, 94% of the students shared that the required reading material is ubiquitously available.





# **SECTION – TEACHERS**

## RESEARCH METHODOLOGY

<b>Data Type:</b>	Primary
<b>Data Collection Tool:</b>	Survey (Online)
<b>Sample Size:</b>	40
<b>Sample Frame:</b>	Teachers of IFTM University in 2022-23 in School of Pharmaceutical Sciences
<b>Sampling:</b>	Probability Sampling
<b>Questionnaire:</b>	5-point Likert scale (with 5 being most satisfied and 1 being least satisfied)

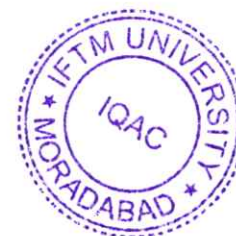


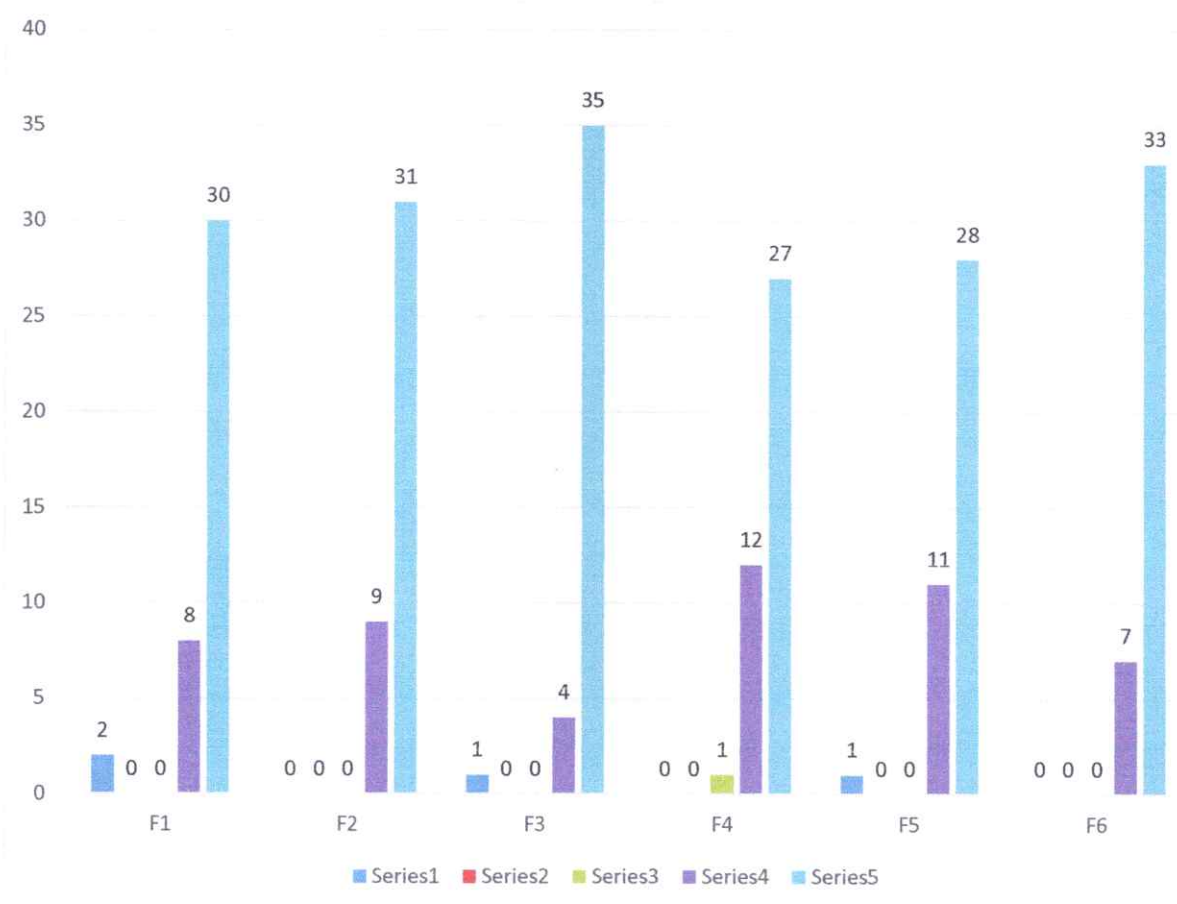
The curriculum is the road map for a student. If well designed, it helps them embark upon the journey of personal joy and professional success.

1. F1: Syllabus is suitable to the course.
2. F2: Syllabus is need based.
3. F3: Aims and objectives of the syllabi are well defined and clear to teachers and students.
4. F4: The course/syllabus has good balance between theory and application.
5. F5: The course/syllabus has made me interested in the subject area.
6. F6: The course/syllabus of this subject increased my knowledge and perspective in the subject area.

5% of the respondents opined that the syllabus of the courses has some scope for further improvement.

SYLLABUS / CURRICULUM							
	F1	F2	F3	F4	F5	F6	Average Rating
1	2	0	1	0	1	0	5
2	0	0	0	0	0	0	
3	0	0	0	1	0	0	
4	8	9	4	12	11	7	
5	30	31	35	27	28	33	
Average Rating	5	5	5	5	5	5	
No. of Participants in the survey	40	40	40	40	40	40	
% of teachers satisfied	95	100	98	100	98	100	
% of teachers dissatisfied	5	0	3	0	3	0	





# **SECTION – ALUMNI**

## RESEARCH METHODOLOGY

<b>Data Type:</b>	Primary
<b>Data Collection Tool:</b>	Survey (Online)
<b>Sample Size:</b>	41
<b>Sample Frame:</b>	Students of IFTM University who passed out of the University before 2022-23 in School of Pharmaceutical Sciences
<b>Sampling:</b>	Non Probability Sampling
<b>Questionnaire:</b>	5-point Likert scale (with 5 being most satisfied and 1 being least satisfied)



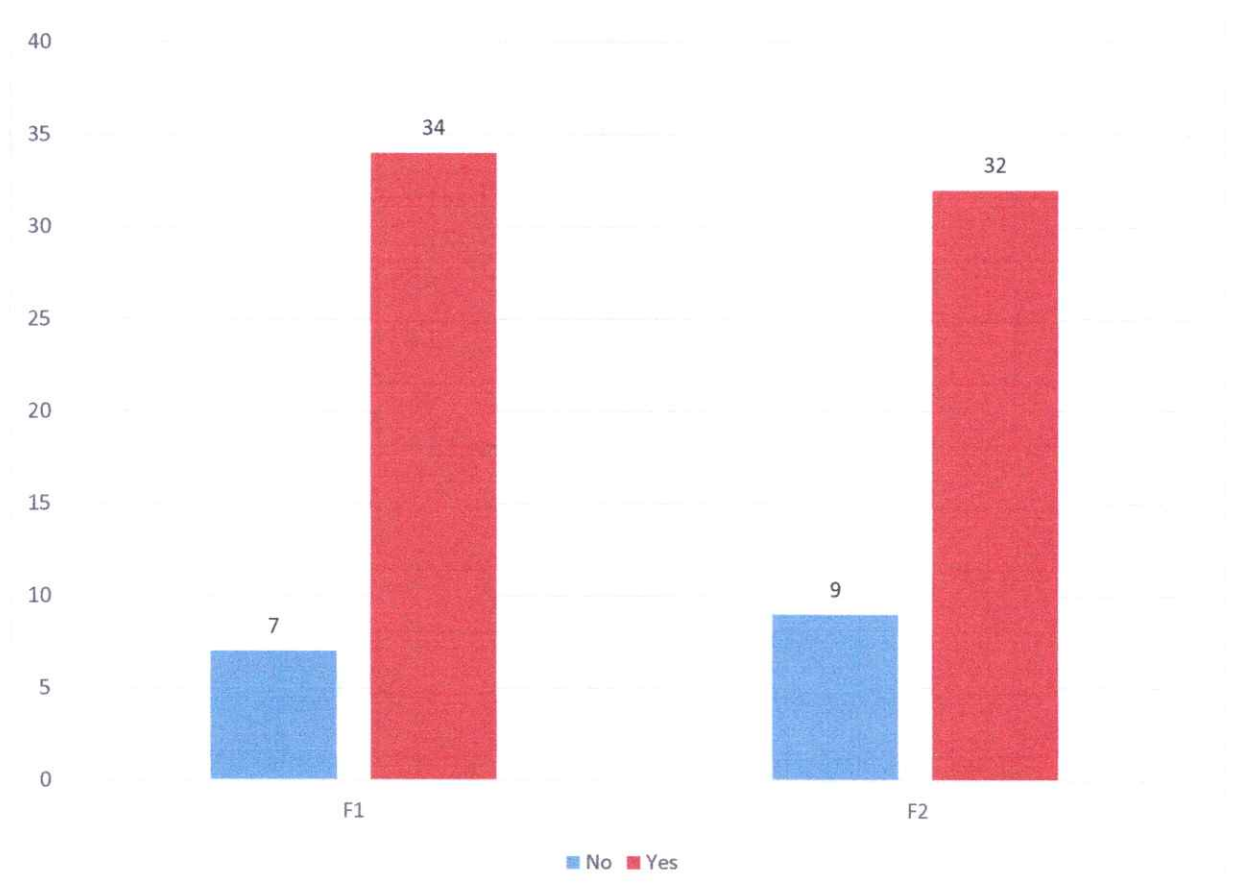
The responses of the alumni are likely to be free of any biases of any kind. To capture the responses of these erstwhile students of the University, an online survey is conducted every year. Amongst the many other dimensions, curriculum stands as the most important one.

The former students were asked dichotomous questions about:

- a. F1: Have you obtained sufficient know-how (both in theory and practice) at IFTMU?
- b. F2: Is the education imparted at IFTMU useful and relevant in your present job?

	No	Yes	Grand Total	Agreed Percentage	Disagreed Percentage
F1	7	34	41	83	17
F2	9	32	41	78	22

The survey revealed that most of the alumni found the education imparted i.e. curriculum at the University sufficient, useful and relevant. However, 22% respondents found the education not relevant to their current vocation.

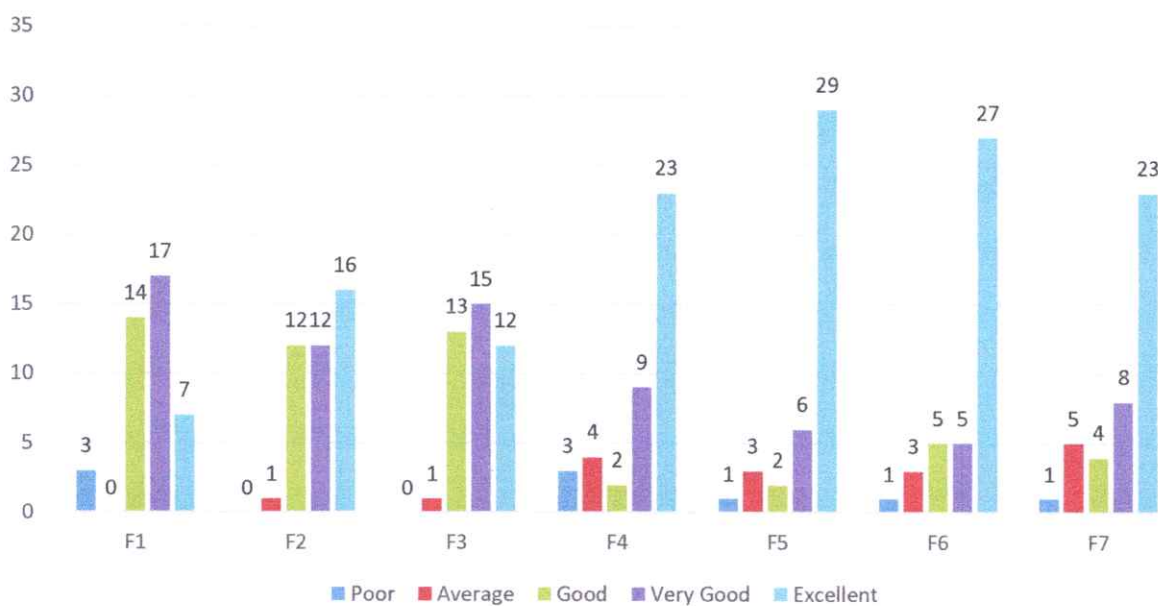


To understand the scenario better, some responses were sought on a 5 point scale, viz. for the factors:

- a. F1: Significance of the course(s) that you learnt in relation to your current job
- b. F2: Learning experience in terms of their relevance to the real life application
- c. F3: Professional courses and their suitability to the Industry
- d. F4: Industry Oriented Projects (if applicable)
- e. F5: Seminars & Workshop
- f. F6: Guest Lectures
- g. F7: Special Training Classes for bridging Industry/Academic gap

	Poor	Average	Good	Very Good	Excellent	Grand Total	Satisfied Percentage	Not Satisfied Percentage
F1	3	0	14	17	7	41	93	7
F2	0	1	12	12	16	41	98	2
F3	0	1	13	15	12	41	98	2
F4	3	4	2	9	23	41	83	17
F5	1	3	2	6	29	41	90	10
F6	1	3	5	5	27	41	90	10
F7	1	5	4	8	23	41	85	15

While most of the alumni shared their satisfaction in regards to curriculum, 17% found the industry-oriented projects not meeting their expectations. 15% respondents also expressed their dissent with the special training classes being conducted for them.



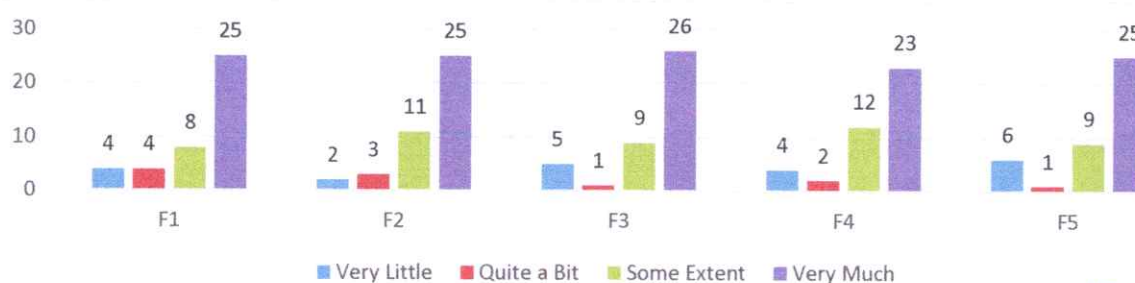


To evaluate the performance on this parameter of Program Educational Objectives, questions were asked in reference to 5 factors viz.

1. F1: Preparation: To educate students for graduate and postgraduate programs and to help them succeed in their chosen/ related fields.
2. F2: Core Competence: To provide students with sound knowledge in their chosen area.
3. F3: Breadth: To train students with knowledge relating to an array of professional fields undertaken so as to comprehend, analyze, design, and create innovative products and find solutions to improve the quality of life
4. F4: Professionalism: To create professionally superior and ethically strong global manpower and to uphold moral values. With effective communication skills, teamwork skills, multidisciplinary approach, and an ability to improve the quality of life.
5. F5: Learning Environment: To create an intellectual environment for research and development aware of emerging technologies leading to continual learning needed for a successful professional career, to create a center of excellence develop technocrats and business leaders.

	Very Little	Quite a Bit	Some Extent	Very Much	Total Responses	Satisfied Percentage	Not Satisfied Percentage
F1	4	4	8	25	41	90	10
F2	2	3	11	25	41	95	5
F3	5	1	9	26	41	88	12
F4	4	2	12	23	41	90	10
F5	6	1	9	25	41	85	15

Majority of the students agreed that the educational program of the University has helped them succeed in their chosen field and has provided them sound knowledge in their area. However, 15% respondents felt that the academic environment at the campus needs to be worked upon.



**SECTION – EMPLOYER  
(INDUSTRY)**

The technical skills demonstrated by the employed / professionals at workplace is a very important indicator of the quality and sufficiency of the curriculum. Responses were sought on the following parameters:

- a. F1: *Technical knowledge/skill*
- b. F2: *Using technology and workplace equipment.*
- c. F3: *Developing practical solutions to work place problems*
- d. F4: *Innovativeness and creativity*

No responses were received from the concerned employers.



\*\*\* LAST PAGE OF THE REPORT \*\*\*



आईएफटीएम विश्वविद्यालय, मुरादाबाद, उत्तर प्रदेश  
**IFTM University, Moradabad, Uttar Pradesh**  
NAAC ACCREDITED

**STUDENT FEEDBACK REPORT**  
**SCHOOL OF PHARMACEUTICAL SCIENCES**  
**2022-23**

# SECTION – FACILITIES



## RESEARCH METHODOLOGY

<b>Data Type:</b>	Primary
<b>Data Collection Tool:</b>	Survey (Online)
<b>Sample Size:</b>	119
<b>Sample Frame:</b>	Students of IFTM University studying in 2022-23 in School of Pharmaceutical Sciences
<b>Sampling:</b>	Probability
<b>Questionnaire:</b>	5-point Likert scale (with 5 being most satisfied and 1 being least satisfied)



In its pursuit of excellence, IQAC at IFTM University conducts a student survey every year; to learn about any scope of improvement in its functioning.

The student responses are sought in the following 5 areas viz.

1. Library
2. Institutional Facilities
3. Examination & Evaluation
4. Placement Cell
5. Student Support

Performance in these areas gets measured through responses given to specific questions (factors) in the questionnaire (Student Survey). In 2022-23, 1984 students participated in the survey. Of these 119 responses were from School of Pharmaceutical Sciences. The findings of the survey on the above mentioned 5 areas are presented in the following section.



## LIBRARY

Library is the epicenter of knowledge in any academic institute. It provides its users place to brain storm and learn. The effectiveness of library facility was measured through the following factors.

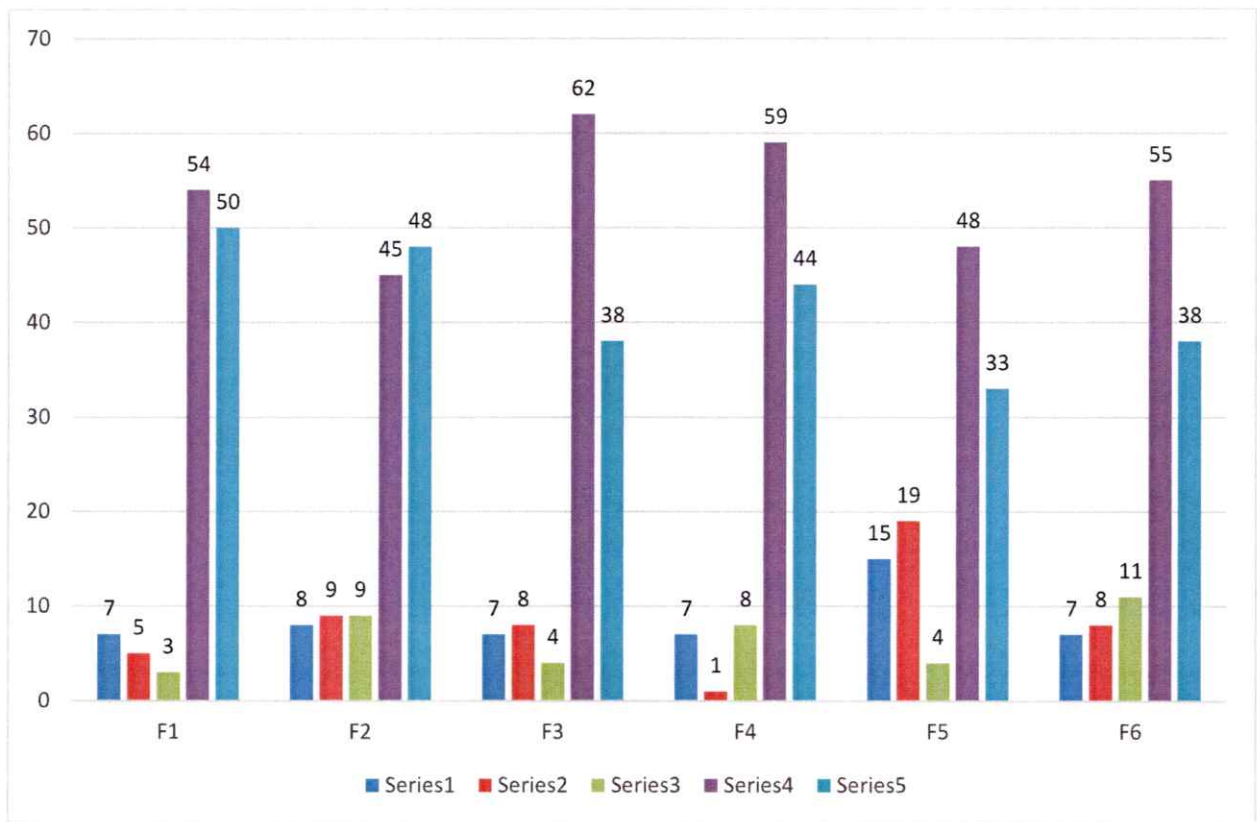
1. F1: The prescribed books/reading materials are available in the library.
2. F2: Reading room and common room are available in the faculty/college building
3. F3: Available reading space in library is satisfactory
4. F4: The library staff are cooperative and helpful
5. F5: Photocopying facility in the library/Department is available and satisfactory
6. F6: Online educational resources are available and accessible

29% respondents felt that reprography services in library need improvement. The survey also revealed the need of a separate reading room by 14% students responding to the survey.

LIBRARY							
Ratings	F1	F2	F3	F4	F5	F6	Cumulative Rating
1	7	8	7	7	15	7	4
2	5	9	8	1	19	8	
3	3	9	4	8	4	11	
4	54	45	62	59	48	55	
5	50	48	38	44	33	38	
<b>Average Rating</b>	4	4	4	4	4	4	
<b>No. of Participants in the survey</b>	119	119	119	119	119	119	
<b>% of students satisfied</b>	90	86	87	93	71	87	
<b>% of students dissatisfied</b>	10	14	13	7	29	13	







## INSTITUTIONAL FACILITIES

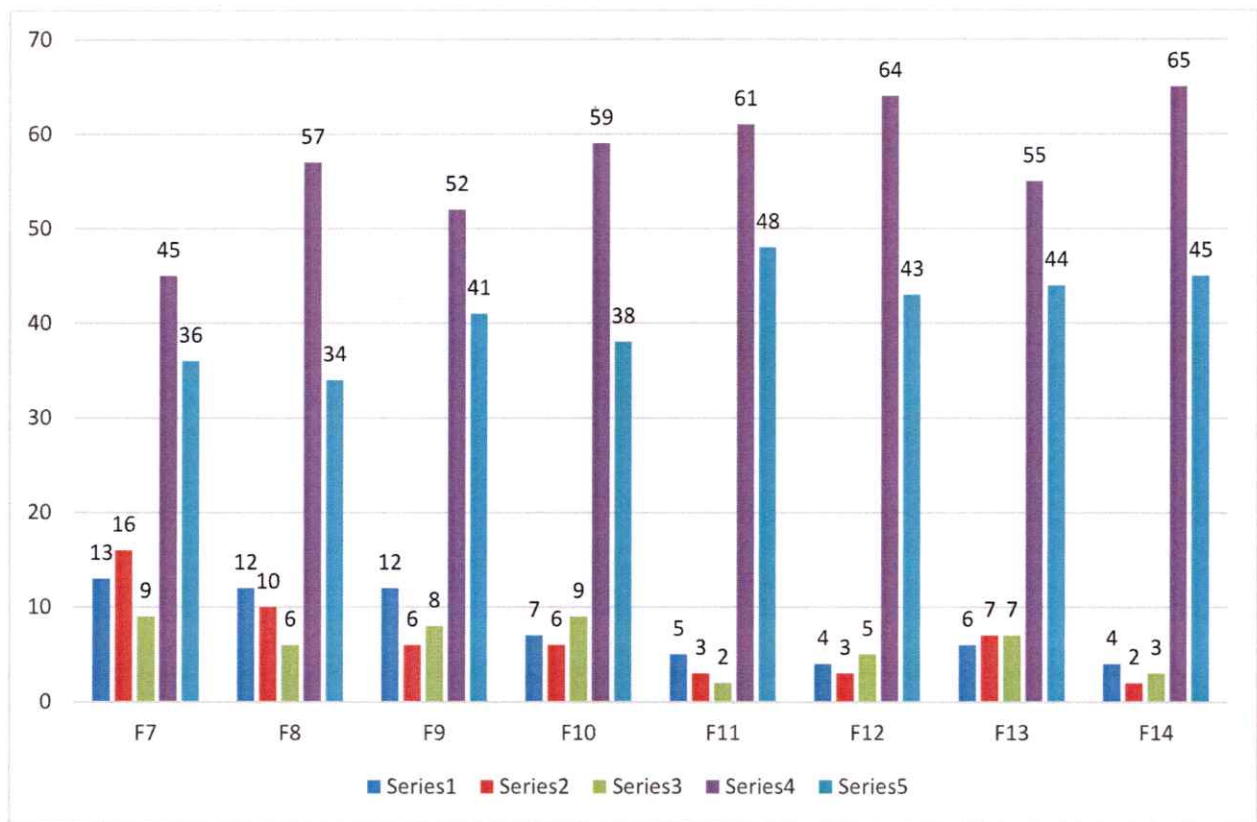
The institutional facilities provide students an environment conducive to learning and help them realize their true potential. The performance on this parameter was measured through various factors viz.

1. F7: Internet facilities are available in the department
2. F8: Toilets/washrooms are hygienic and properly maintained.
3. F9: Clean drinking water is available in the department and on the campus
4. F10: Equipment in the lab(s) is in working condition.
5. F11: The campus is green and Eco friendly
6. F12: The buildings/classrooms are accessible to differently abled persons.
7. F13: The classrooms are clean and well maintained
8. F14: The campus has adequate power supply.

Out of 119 respondents, 93% agreed that the environment at IFTM is ecofriendly and green. 95% of respondents also agreed that the university campus has adequate power supply. 94% of the respondents found the campus buildings friendly and having suitable provisions for differently abled people. However, 24% of the respondents viewed internet connectivity as not satisfactory. 18% of the respondents also felt that more cleanliness and hygiene is required to be maintained in the wash rooms.

INSTITUTIONAL FACILITIES									
Ratings	F7	F8	F9	F10	F11	F12	F13	F14	Cumulative Rating
1	13	12	12	7	5	4	6	4	4
2	16	10	6	6	3	3	7	2	
3	9	6	8	9	2	5	7	3	
4	45	57	52	59	61	64	55	65	
5	36	34	41	38	48	43	44	45	
Average Rating	4	4	4	4	4	4	4	4	
No. of Participants in the survey	119	119	119	119	119	119	119	119	
% of students satisfied	76	82	85	89	93	94	89	95	
% of students dissatisfied	24	18	15	11	7	6	11	5	





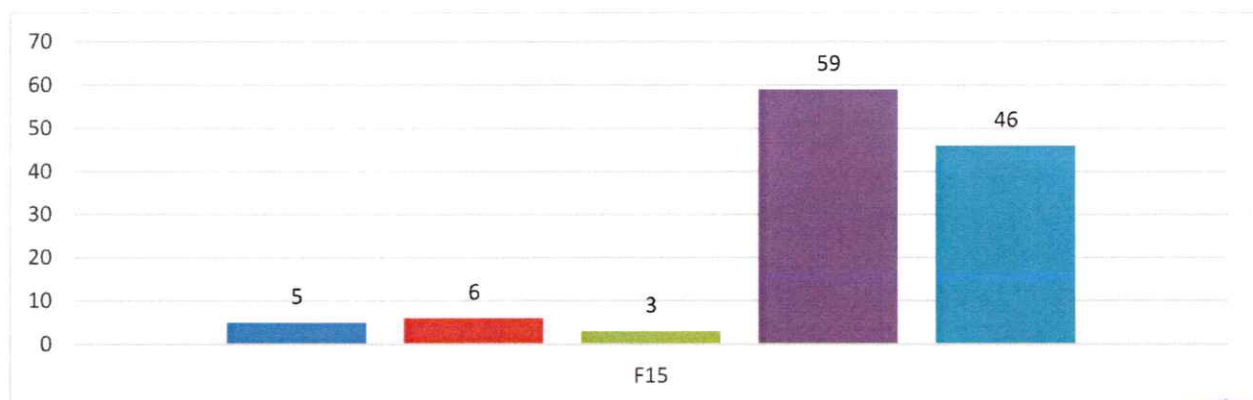
## EXAMINATION & EVALUATION

Examination and its evaluation were measured with the help of following factor.

1. F15: Results and attendance records are displayed on time

91% of the respondents agreed that the results and attendance records are displayed on time. The average rating for this factor was 4.

EXAMINATION & EVALUATION		
Ratings	F15	Cumulative Rating
1	5	4
2	6	
3	3	
4	59	
5	46	
Average Rating	4	
No. of Participants in the survey	119	
% of students satisfied	91	
% of students dissatisfied	9	

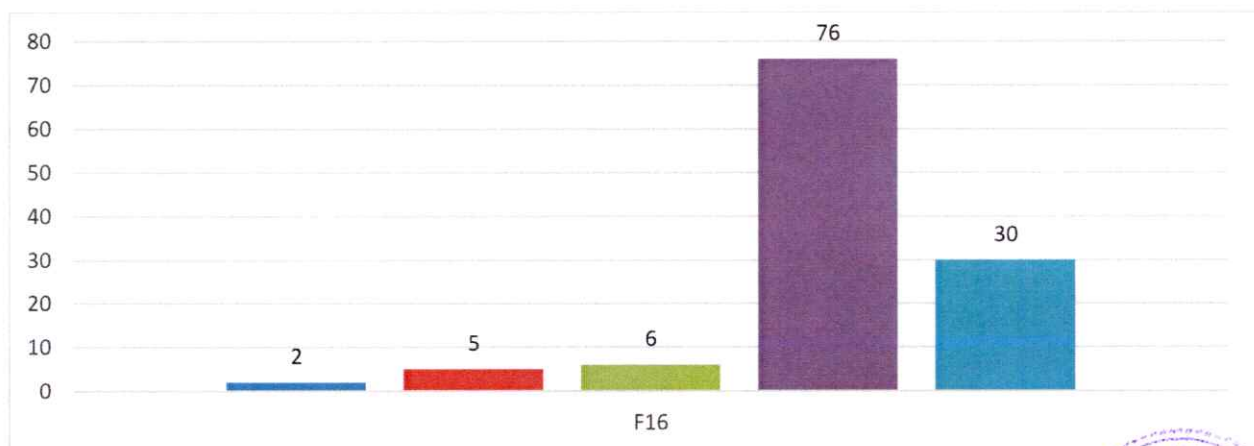


## PLACEMENT CELL

The performance of placement cell and its functioning was found satisfactory by 94% of the respondents. The average rating being given to the university on this parameter was 4. Student's perception and experience with the placement cell was sought.

1. F16: The functioning of the placement cell(s) in the university/department is satisfactory.

PLACEMENT CELL		
Ratings	F16	Cumulative Rating
1	2	4
2	5	
3	6	
4	76	
5	30	
<b>Average Rating</b>	4	
<b>No. of Participants in the survey</b>	119	
<b>% of students satisfied</b>	94	
<b>% of students dissatisfied</b>	6	



## STUDENT SUPPORT

Though university aims to facilitate its students proactively, it may happen that students have some grievances and suggestions. To get their concerns addressed, they may require meeting functionaries across departments.

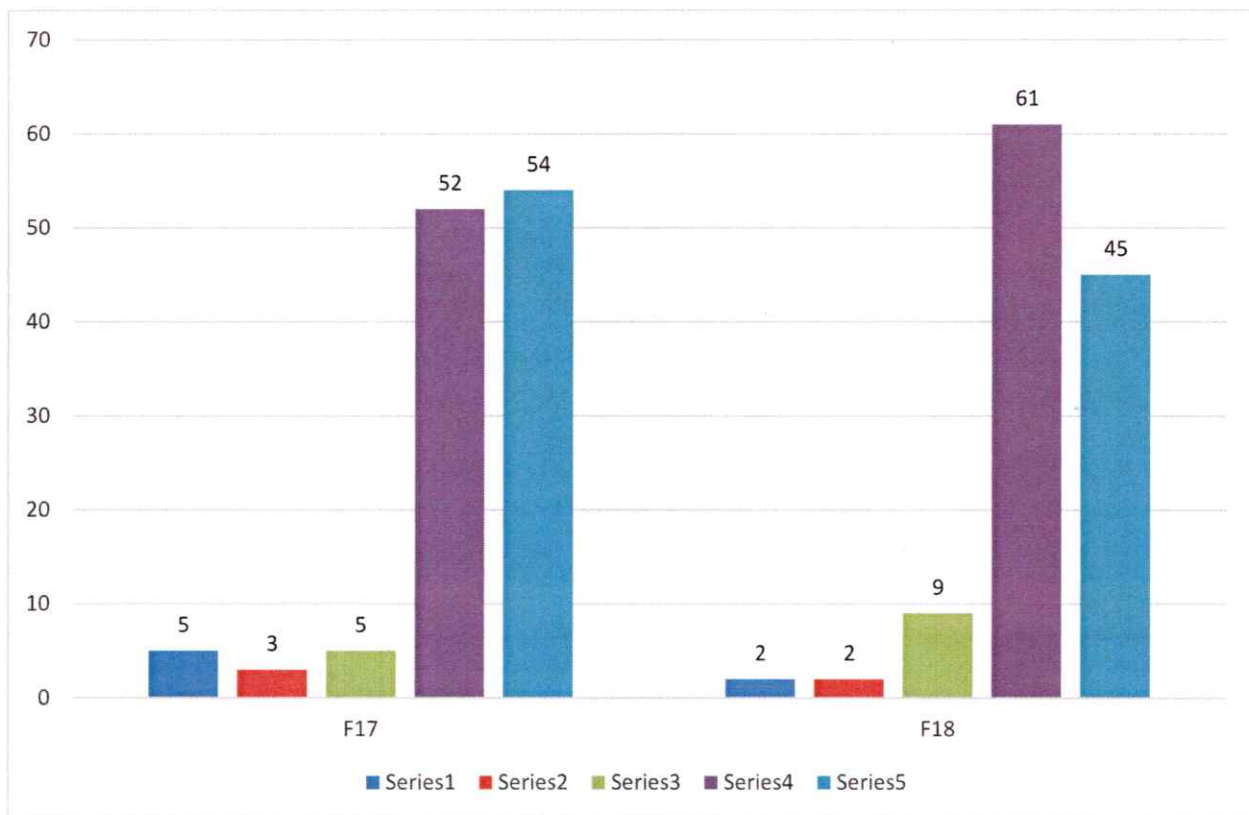
To measure performance in this area, responses were sought on the following factors –

1. F17: The office staff in the department is helpful.
2. F18: Grievances/problems are redressed/ solved well in time.

93% of the respondents found their interaction with office staff as helpful. 97% respondents shared their contentment with the grievance redressal mechanism of the university.

<b>STUDENT SUPPORT</b>			
<b>Ratings</b>	<b>F17</b>	<b>F18</b>	<b>Cumulative Rating</b>
<b>1</b>	5	2	4
<b>2</b>	3	2	
<b>3</b>	5	9	
<b>4</b>	52	61	
<b>5</b>	54	45	
<b>Average Rating</b>	4	4	
<b>No. of Participants in the survey</b>	119	119	
<b>% of students satisfied</b>	93	97	
<b>% of students dissatisfied</b>	7	3	





# **SECTION – TEACHING & EVALUATION**





## RESEARCH METHODOLOGY

<b>Data Type:</b>	Primary
<b>Data Collection Tool:</b>	Survey (Online)
<b>Sample Size:</b>	113
<b>Sample Frame:</b>	Students of IFTM University studying in 2022-23 in School of Pharmaceutical Sciences
<b>Sampling:</b>	Probability
<b>Questionnaire:</b>	5-point Likert scale (with 5 being most satisfied and 1 being least satisfied)



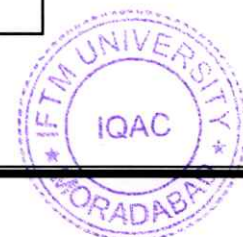
Teaching and evaluation of students are at the core of any academic institute. It helps in bringing the desired change in the students and helps them contribute in making society a better place. To learn about the performance in these two areas, a questionnaire was prepared and administered through a survey.

## TEACHING

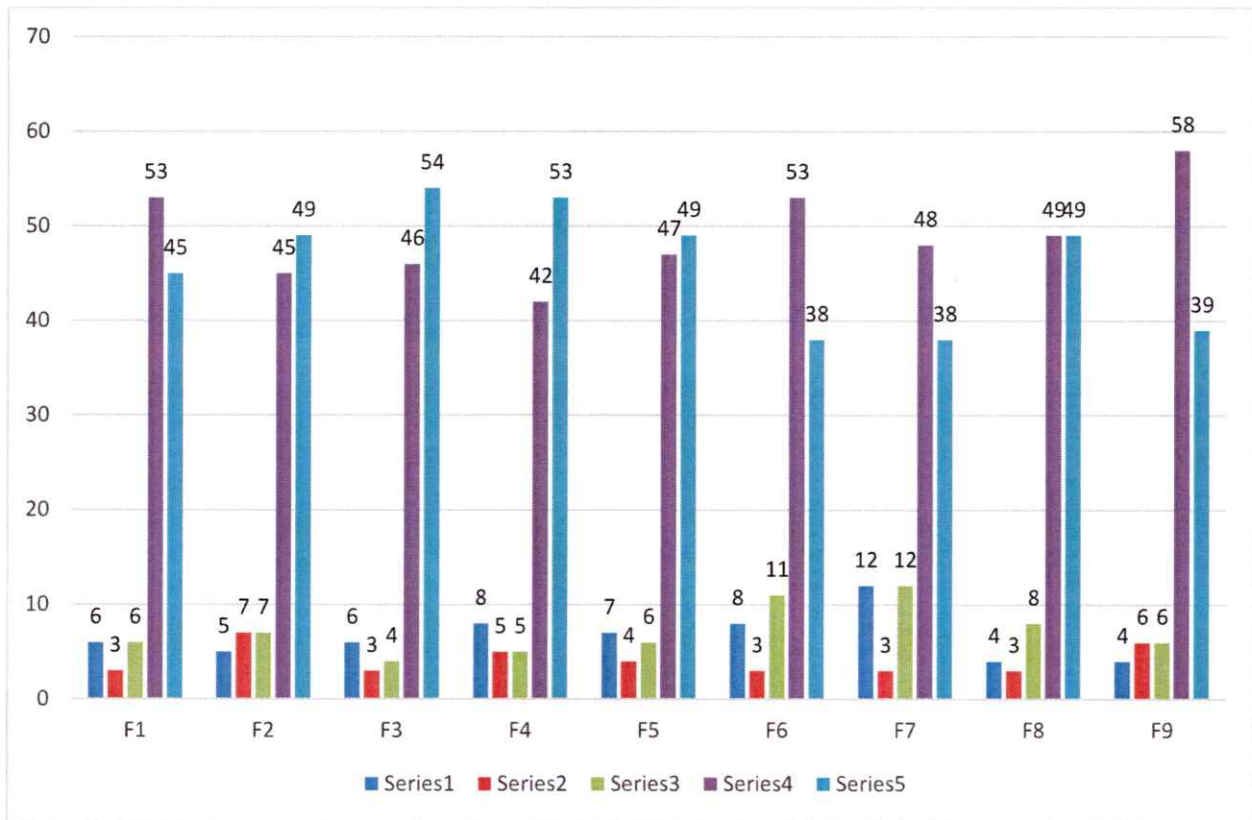
Performance on teaching was evaluated through following 9 factors –

1. F1: The teacher is punctual in the class.
2. F2: The teacher comes well prepared for the lecture
3. F3: The teacher communicates clearly and inspires me by his/ her teaching.
4. F4: The teacher completes the entire syllabus in time.
5. F5: The teacher discusses topics and interacts in the class
6. F6: The teacher encourages for participation and discussion in class.
7. F7: The teacher uses modern teaching aids, handouts, suitable references, power-point presentations (PPT), web-resources, etc.
8. F8: The teacher's attitude towards the students is friendly & helpful.
9. F9: The teacher is available and accessible in Department.

TEACHING										
Ratings	F1	F2	F3	F4	F5	F6	F7	F8	F9	Average Rating
1	6	5	6	8	7	8	12	4	4	4
2	3	7	3	5	4	3	3	3	6	
3	6	7	4	5	6	11	12	8	6	
4	53	45	46	42	47	53	48	49	58	
5	45	49	54	53	49	38	38	49	39	
Average Rating	4	4	4	4	4	4	4	4	4	
No. of Participants in the survey	113	113	113	113	113	113	113	113	113	
% of students satisfied	92	89	92	88	90	90	87	94	91	
% of students dissatisfied	8	11	8	12	10	10	13	6	9	



90% of respondents rated classroom discussions as meaningful and help understanding the topic in a lucid manner. 94% respondents found their teachers friendly and inspire students to learn and participate in discussion. However, 13% students felt that modern teaching aids including AV systems are required and will enhance their class room experience and learning process.



## EVALUATION

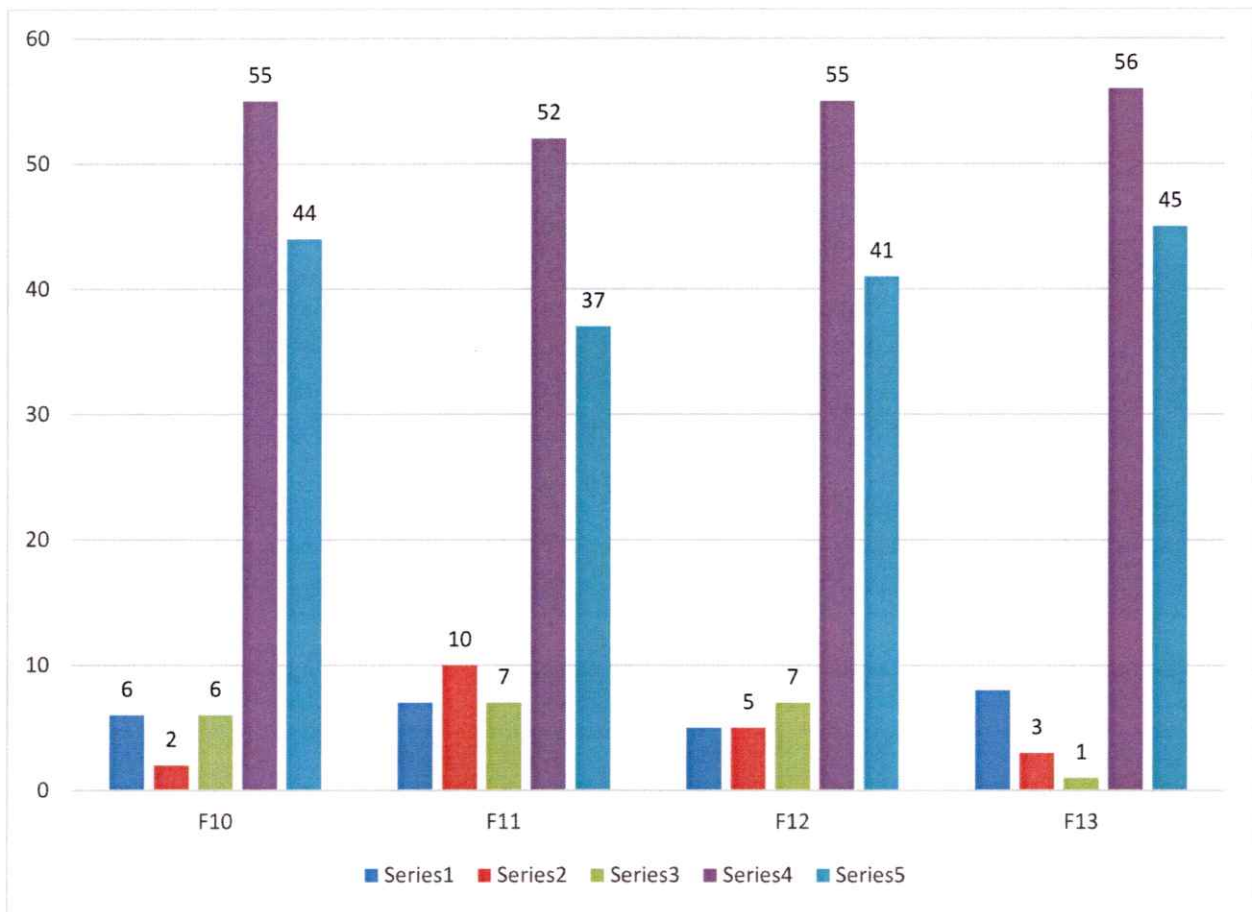
Performance of the “evaluation” criteria is based on 4 factors viz.

1. F10: The evaluation process is fair and unbiased.
2. F11: Regular and timely feedback is given on our (students’) performance.
3. F12: Periodical assessments are conducted as per schedule.
4. F13: I have learnt and understood the subject material/s in this course.

EVALUATION					
Ratings	F10	F11	F12	F13	Average Rating
1	6	7	5	8	4
2	2	10	5	3	
3	6	7	7	1	
4	55	52	55	56	
5	44	37	41	45	
Average Rating	4	4	4	4	
No. of Participants in the survey	113	113	113	113	
% of students satisfied	93	85	91	90	
% of students dissatisfied	7	15	9	10	

93% of the students were satisfied with the process and performance of evaluation exercise in the university. They agreed that the evaluation process is fair and unbiased. 91% of the students agreed that assessment is done as per the schedule and timely feedback on their performance is provided. However, 15% of the respondents felt that the regular and timely feedback on their performance is required.





# SECTION – CURRICULUM



## RESEARCH METHODOLOGY

<b>Data Type:</b>	Primary
<b>Data Collection Tool:</b>	Survey (Online)
<b>Sample Size:</b>	102
<b>Sample Frame:</b>	Students of IFTM University studying in 2022-23 in School of Pharmaceutical Sciences
<b>Sampling:</b>	Probability Sampling
<b>Questionnaire:</b>	5-point Likert scale (with 5 being most satisfied and 1 being least satisfied)



Curriculum adopted by a university provides not only a structure for teaching; instead it's a measurable plan. It helps quantify the efforts being put by the students along with the other participants of the ecosystem. Its acceptance with all the stake holders is a pre requisite to the ultimate purpose, it tries to achieve.

To bridge any gap between the expectations and the perception about the curriculum, an annual survey is conducted by the university. The questionnaire captures responses on 3 themes viz. acceptance amongst students, perceived relevance and support material. The factors are as follows:

- a. *Acceptance of curriculum amongst students*
- b. *Perceived relevance of the curriculum*
- c. *Support Material for subjects (curriculum)*



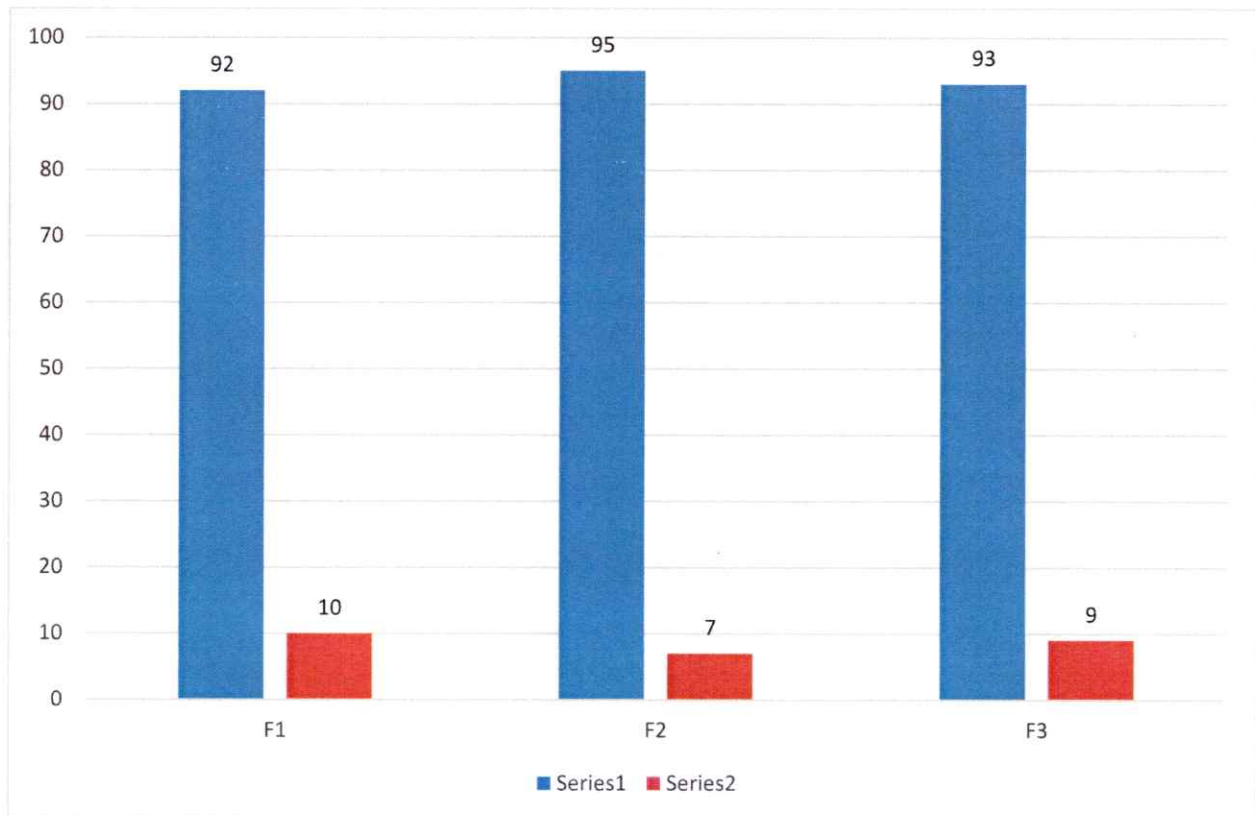


### ACCEPTANCE OF CURRICULUM AMONGST STUDENTS –

1. F1: I found the curriculum easy and interesting
2. F2: The instructions given in the curriculum is easy to follow
3. F3: The syllabus has good balance between theory and practical exercises

	ACCEPTANCE		
	F1	F2	F3
Yes	92	95	93
No	10	7	9
Total Responses	102	102	102
Yes %	90	93	91
No %	10	7	9

90% of the respondents found the curriculum easy, which indicates that the curriculum is designed well according to the aptitude level of the students at large. 93% of the respondents found it easy to follow the instructions given in the curriculum.



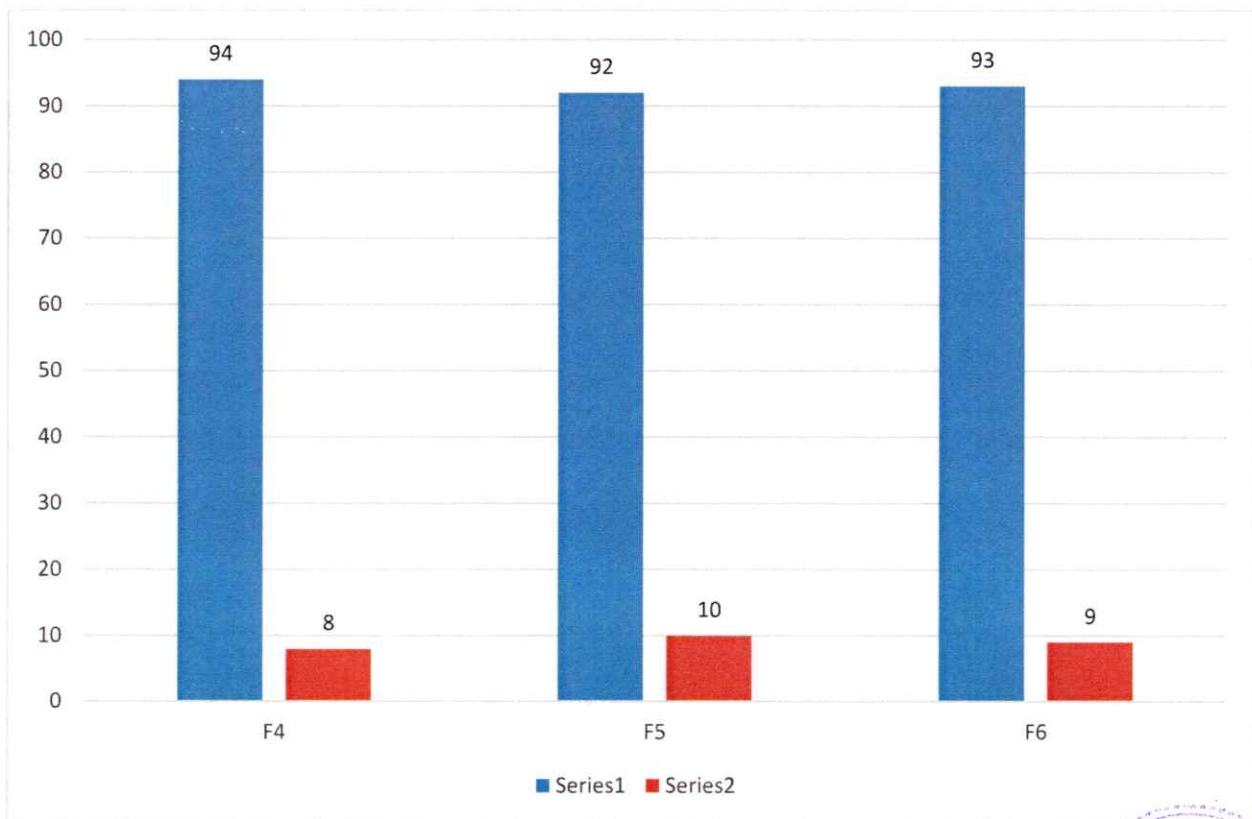
**PERCEIVED RELEVANCE OF THE CURRICULUM –**

- 4. F4: The subjects are relevant to my future job aspirations
- 5. F5: The subjects are very practical and seems applicable in daily life
- 6. F6: The course has helped me develop my personality

	PERCEIVED RELEVANCE		
	F4	F5	F6
Yes	94	92	93
No	8	10	9
Total Responses	102	102	102
Yes %	92	90	91
No %	8	10	9

90% respondents found the subjects practical and having application in real life. 92% of the students found the subjects relevant according to their future job aspirations.

While responses reflect the acceptance, usefulness and contemporary nature of the curriculum at the university; it also highlights the areas for further improvement.

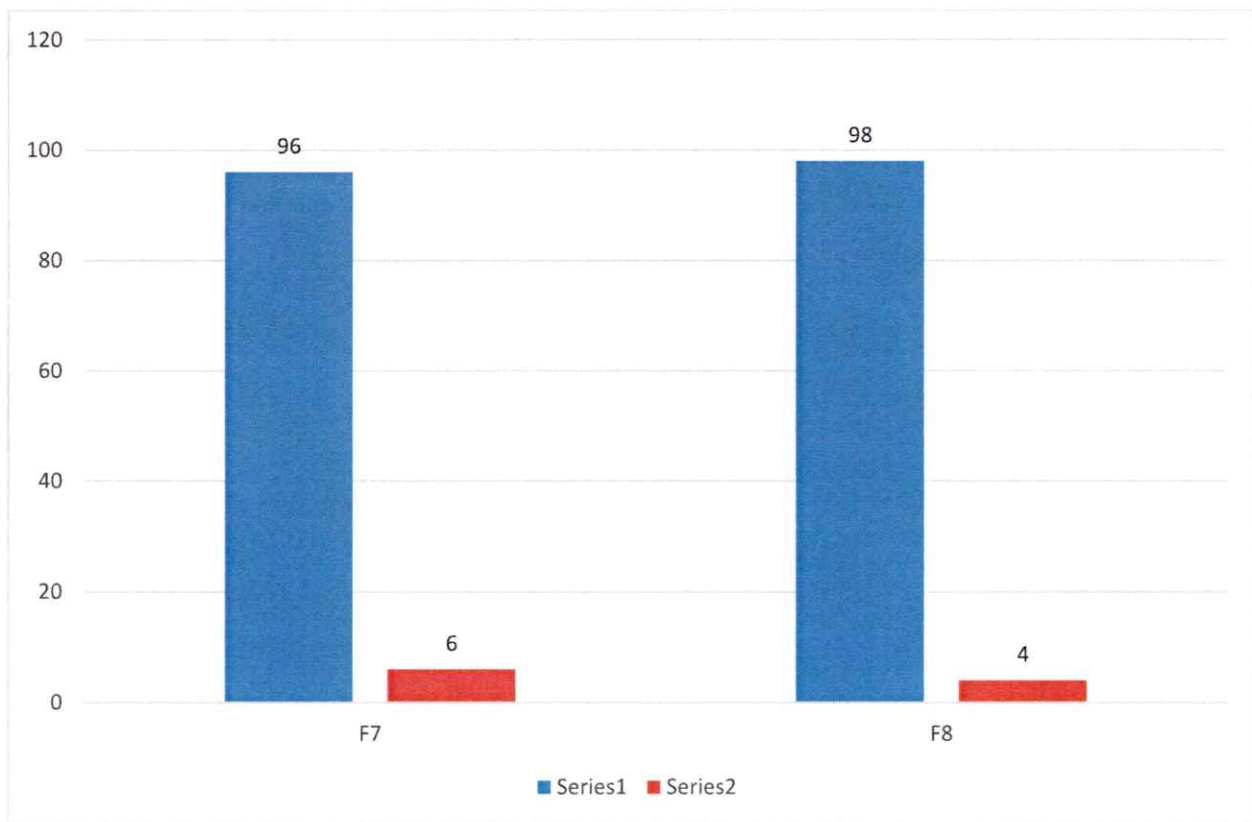


**SUPPORT MATERIAL FOR SUBJECTS (CURRICULUM) –**

- 7. F7: The reading material and references of the subject are easily available
- 8. F8: Course content is followed by corresponding reference materials?
- 9. F9: What other changes would you like to suggest improving the curriculum / course?

	SUPPORT MATERIAL	
	F7	F8
Yes	96	98
No	6	4
<b>Total Responses</b>	<b>102</b>	<b>102</b>
Yes %	94	96
No %	6	4

While, 96% of the respondents opined that they were provided with the reference material, 94% of the students shared that the required reading material is ubiquitously available.





आईएफटीएम विश्वविद्यालय, मुरादाबाद, उत्तर प्रदेश  
**IFTM University, Moradabad, Uttar Pradesh**  
NAAC ACCREDITED

**TEACHERS' FEEDBACK REPORT**  
**SCHOOL OF PHARMACEUTICAL SCIENCES**  
**2022-23**

## RESEARCH METHODOLOGY

<b>Data Type:</b>	Primary
<b>Data Collection Tool:</b>	Survey (Online)
<b>Sample Size:</b>	40
<b>Sample Frame:</b>	Teachers teaching at IFTM University in 2022-23 in School of Pharmaceutical Sciences
<b>Sampling:</b>	Probability Sampling
<b>Questionnaire:</b>	5-point Likert scale (Strongly Disagree – 1, Disagree – 2, Neither Agree Nor Disagree – 3, Agree – 4, Strongly Agree - 5)



Teachers are the backbone of any academic institute. No academic institute can thrive, unless its faculty is not satisfied. In its pursuit of excellence, IQAC at IFTM University conducts a teacher's survey every year; to learn about any scope of improvement in its functioning.

The survey attempted to capture the satisfaction level of teachers in reference to the following 6 areas viz.

- a. *Curriculum / Syllabus*
- b. *Examination & Evaluation*
- c. *Facilities*
- d. *Course Content & Books*
- e. *Freedom*
- f. *Friendly & Favorable Environment*

Performance in these areas gets measured through responses given to specific questions (factors) in the questionnaire (Teachers' Feedback Survey). In 2022-23, 40 faculty members participated in the survey from School of Pharmaceutical Sciences. The findings of the survey 2022-23 on the above mentioned 6 areas are presented in the following section.



## CURRICULUM / SYLLABUS

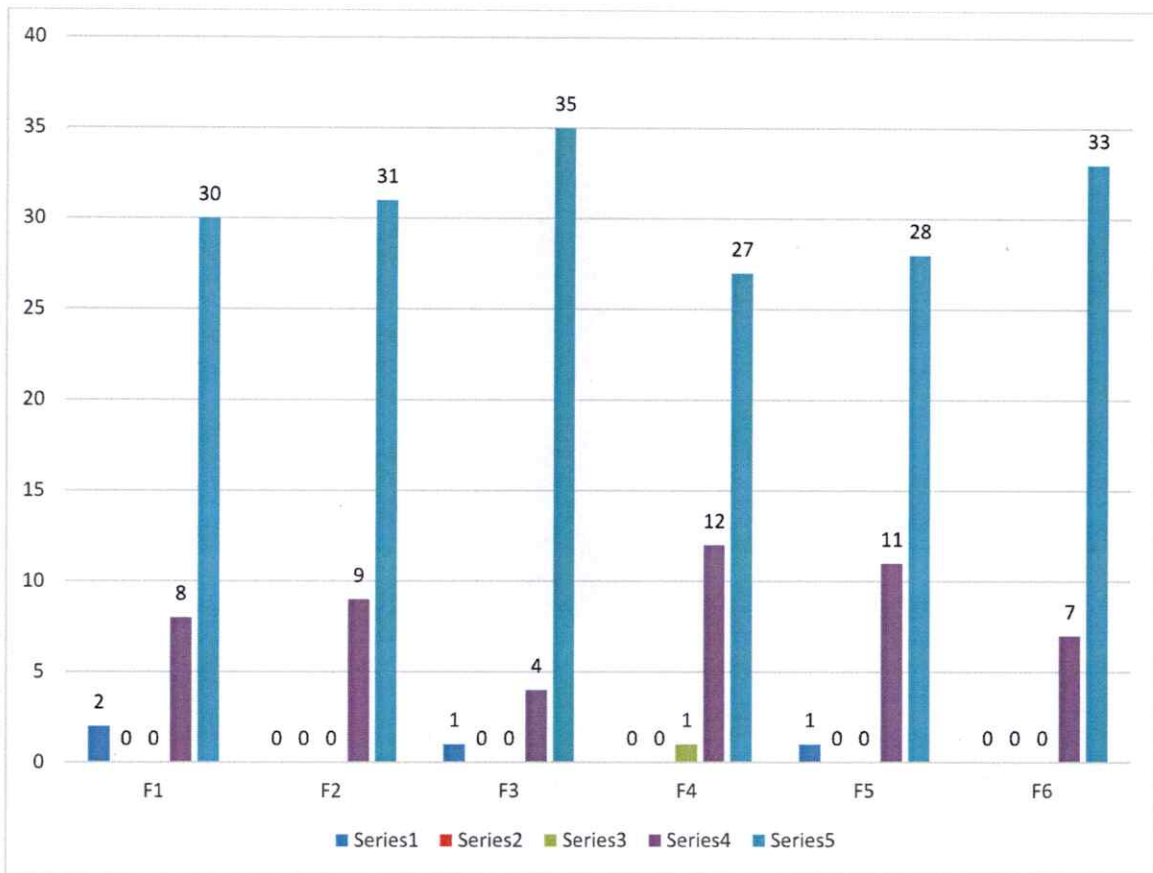
The curriculum is the road map for a student. If well designed, it helps them embark upon the journey of personal joy and professional success.

1. F1: Syllabus is suitable to the course.
2. F2: Syllabus is need based.
3. F3: Aims and objectives of the syllabi are well defined and clear to teachers and students.
4. F4: The course/syllabus has good balance between theory and application.
5. F5: The course/syllabus has made me interested in the subject area.
6. F6: The course/syllabus of this subject increased my knowledge and perspective in the subject area.

98% of the respondents agreed that the aims and objectives of syllabi are well defined and clear to both teachers and students. All the teachers agreed that the syllabus is well curated with a good balance between theory and practice. 98% agreed that the syllabus has made them inquisitive and interested in their respective subjects.

SYLLABUS / CURRICULUM							
	F1	F2	F3	F4	F5	F6	Average Rating
1	2	0	1	0	1	0	5
2	0	0	0	0	0	0	
3	0	0	0	1	0	0	
4	8	9	4	12	11	7	
5	30	31	35	27	28	33	
Average Rating	5	5	5	5	5	5	
No. of Participants in the survey	40	40	40	40	40	40	
% of teachers satisfied	95	100	98	100	98	100	
% of teachers dissatisfied	5	0	3	0	3	0	







## EXAMINATION & EVALUATION

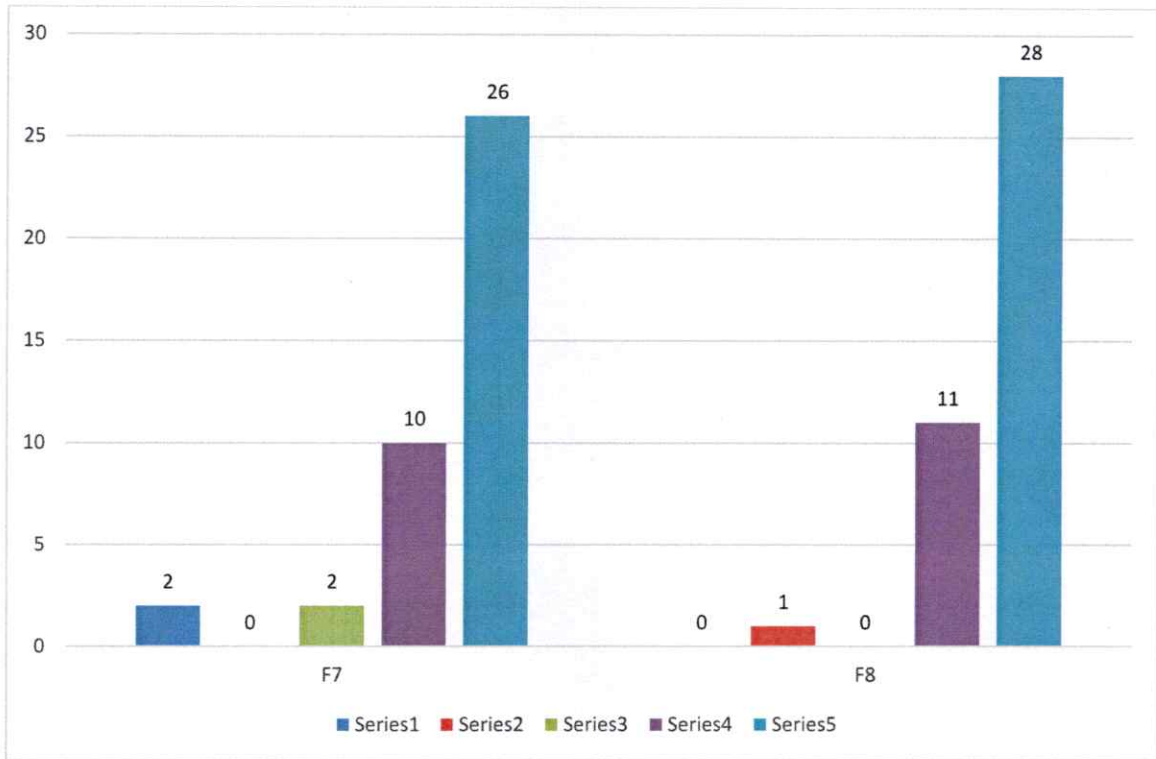
The examination and evaluation process at the university is rigorous and conducive to the development of its students.

1. F7: The course/ programme of studies carries sufficient number of optional papers.
2. F8: Tests and examinations are conducted well in time with proper coverage of all units in the syllabus.

Out of 40 respondents, all the faculty members agreed that the examinations are conducted well on time and covers the entire syllabus. 95% faculty members opined that courses have ample number of optional papers. 98% respondents shared their contentment with the examination process and its adequacy.

EXAMINATION & EVALUATION			
	F7	F8	Average Rating
1	2	0	5
2	0	1	
3	2	0	
4	10	11	
5	26	28	
Average Rating	4	5	
No. of Participants in the survey	40	40	
% of teachers satisfied	95	98	
% of teachers dissatisfied	5	3	





## FACILITIES

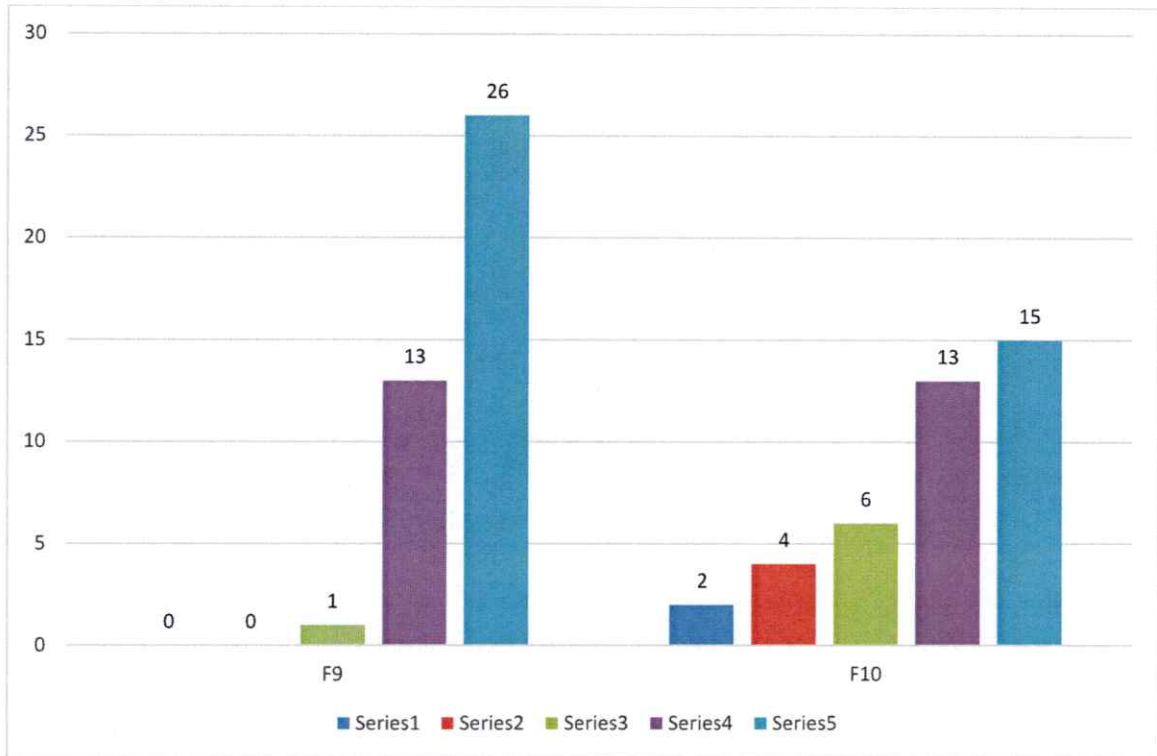
The University also believes that basic amenities like hygienic washrooms, a neat personal space to work, and reading room are essential to a teacher.

1. F9: Infrastructural facilities, such as teacher's rooms/carrels, class rooms, reading rooms and toilets are available in the Department.
2. F10: Staff canteen is available at the faculty level.

FACILITIES			
	F9	F10	Average Rating
1	0	2	4
2	0	4	
3	1	6	
4	13	13	
5	26	15	
Average Rating	5	4	
No. of Participants in the survey	40	40	
% of teachers satisfied	100	85	
% of teachers dissatisfied	0	15	

While all the faculty members were found satisfied with various facilities and infrastructure meant for them; about 15% of the faculty members felt the need of a dedicated canteen at the department level.





## COURSE CONTENT & BOOKS

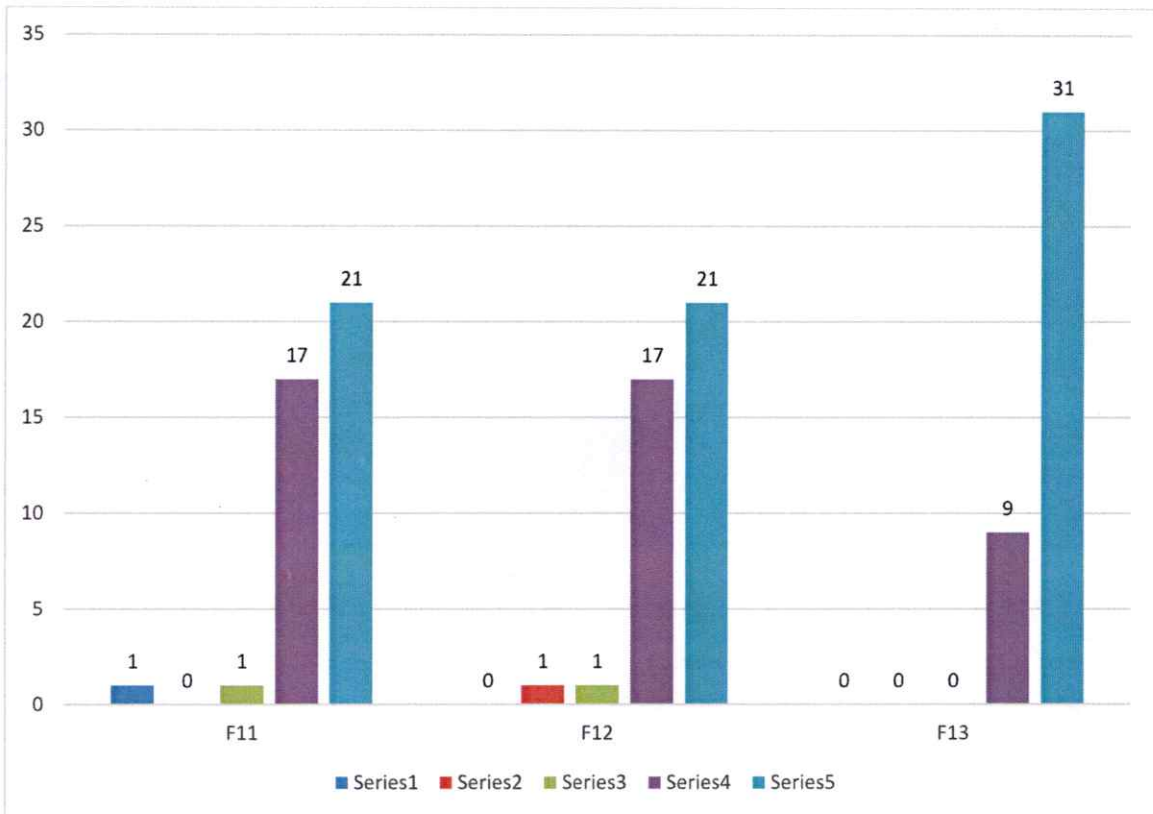
Availability of reference material, books and other forms of literature is important not only for students but teachers too. The performance on course content and books was measured through following 3 factors:

1. F11: Course content is followed by corresponding reference materials.
2. F12: Sufficient number of prescribed books is available in the library.
3. F13: The books prescribed/ listed as reference materials are relevant, updated appropriate.

98% of the respondents agreed that the course content is followed by relevant reference material. The similar number of respondents reflected their contentment with the availability of books in the library and their quality.

COURSE CONTENT & BOOKS				
	F11	F12	F13	Average Rating
1	1	0	0	5
2	0	1	0	
3	1	1	0	
4	17	17	9	
5	21	21	31	
Average Rating	4	4	5	
No. of Participants in the survey	40	40	40	
% of teachers satisfied	98	98	100	
% of teachers dissatisfied	3	3	0	





## FREEDOM

Freedom to bring novelty at work place, including in curriculum and pedagogy sans any reservations help an academician unleash his true potential. It not only benefits the academia but also enrich the experience of all the stake holders.

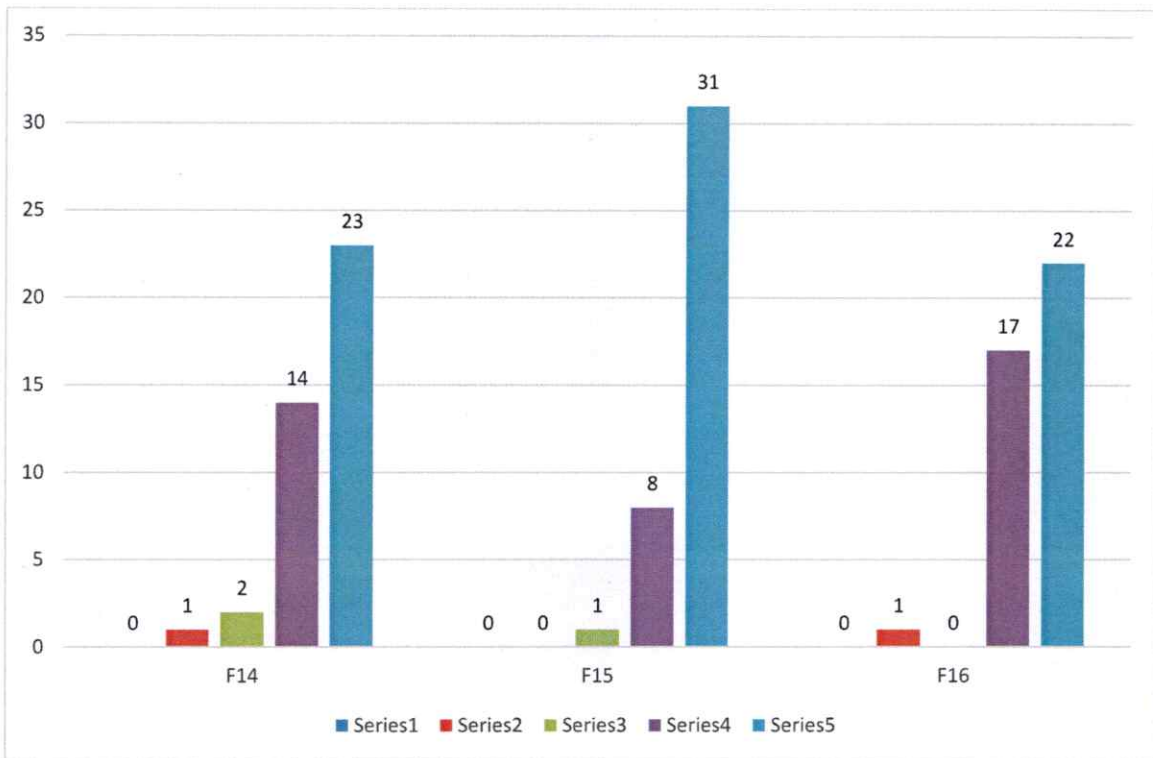
To measure performance in this area, responses were sought on the following factors –

1. F14: I have the freedom to propose, modify, suggest and incorporate new topics in the syllabus.
2. F15: I have the freedom to adopt new techniques/strategies of teaching such as seminar presentations, group discussions and learners' participation.
3. F16: I have the freedom to adopt/adapt new techniques/strategies of testing and assessment of students.

Most of the respondents agreed that they have the required freedom to propose new topics in the syllabus. All the respondents confirmed that they have the freedom to adopt new techniques of teaching. All the teachers also confirmed that they have the freedom to use new methods of assessment in the class.

FREEDOM				
	F14	F15	F16	Average Rating
1	0	0	0	5
2	1	0	1	
3	2	1	0	
4	14	8	17	
5	23	31	22	
Average Rating	4	5	5	
No. of Participants in the survey	40	40	40	
% of teachers satisfied	98	100	98	
% of teachers dissatisfied	3	0	3	







## FRIENDLY & FAVOURABLE ENVIRONMENT

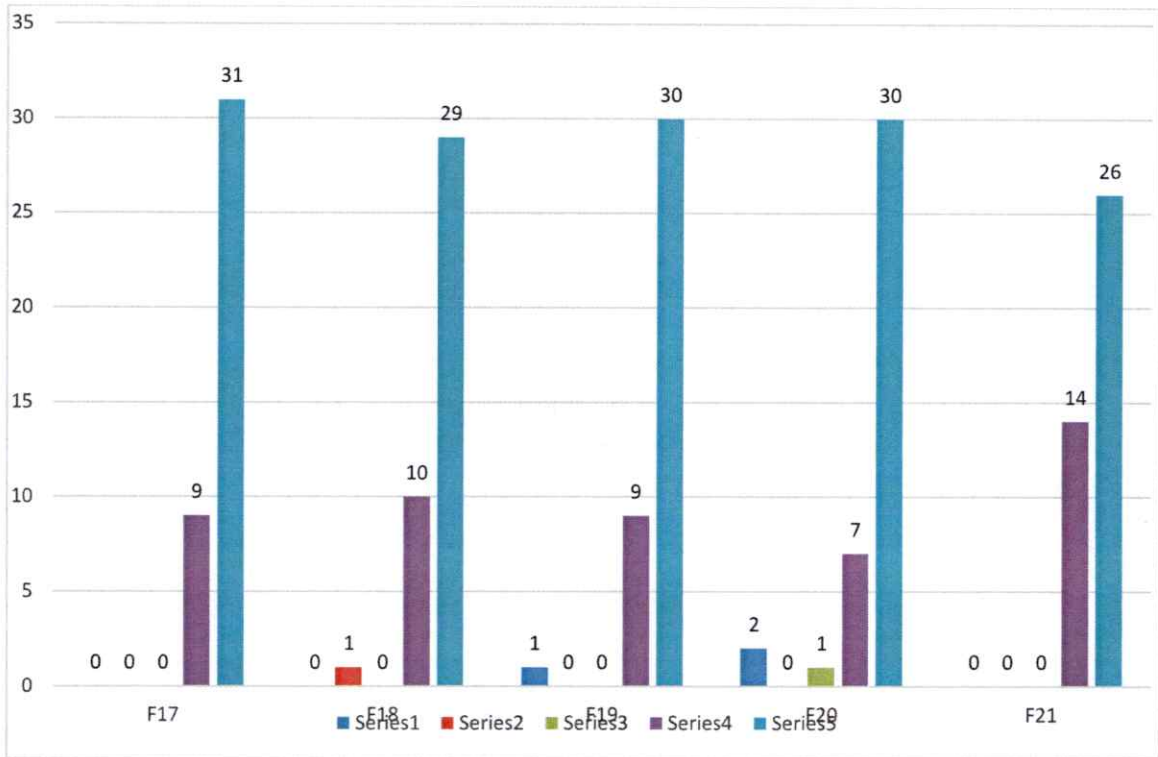
A friendly environment and favorable policies help faculty delivering their best. To measure the performance in this area, responses from faculty members were sought on the following factors –

1. F17: The environment in the department is conducive to teaching and research.
2. F18: The administration is teacher friendly.
3. F19: The University provides adequate and smooth support for projects and research facilities.
4. F20: The University provides adequate funding and support to faculty members for upgrading their skills and qualifications.
5. F21: Provisions for professional development are non-discriminatory and fair.

FRIENDLY & FAVOURABLE ENVIRONMENT						
	F17	F18	F19	F20	F21	Average Rating
1	0	0	1	2	0	5
2	0	1	0	0	0	
3	0	0	0	1	0	
4	9	10	9	7	14	
5	31	29	30	30	26	
Average Rating	5	5	5	5	5	
No. of Participants in the survey	40	40	40	40	40	
% of teachers satisfied	100	98	98	95	100	
% of teachers dissatisfied	0	3	3	5	0	

Most of the faculty members agreed that the environment at the University and its policies are very conducive for teaching and undertaking research projects. Most of the respondents agreed that the support they get from the administration has enabled them to perform their duties in a better manner.





\*\*\* LAST PAGE OF THE REPORT \*\*\*



आईएफटीएम विश्वविद्यालय, मुरादाबाद, उत्तर प्रदेश

**IFTM University, Moradabad, Uttar Pradesh**

**NAAC ACCREDITED**

**ALUMNI FEEDBACK REPORT**  
**SCHOOL OF PHARMACEUTICAL SCIENCES**  
**2022-23**

## RESEARCH METHODOLOGY

<b>Data Type:</b>	Primary
<b>Data Collection Tool:</b>	Survey (Online)
<b>Sample Size:</b>	41
<b>Sample Frame:</b>	Individuals who have been student at IFTM University in School of Pharmaceutical Sciences before 2022-23
<b>Sampling:</b>	Non-Probability
<b>Questionnaire:</b>	5-point Likert scale (with 5 being most satisfied and 1 being least satisfied)

\* Scale with 5 points viz. *excellent, very good, good, average and poor* is interpreted and presented as satisfied and dissatisfied.

\*\* Responses excellent, very good and good are interpreted as *satisfied respondent* and responses average and poor are interpreted as dissatisfied.

Alumni of any institute or a university are the true reflections of the quality of services rendered there. They are the ones having the complete experience, and their suggestions are evenhanded and valuable.

To learn about any possible need for improvement, the University tries to connect with its alumni every year. An online survey is administered to get their feedback, improve its functioning and fix any shortcoming if found.

The survey attempted to capture the satisfaction level of alumni in reference to the following 4 areas viz.

1. University Facilities & Overall Infrastructure
2. Grievances, Facilities & Academic Initiatives
3. Educational Objectives of the Program
4. Feedback about Training & Placement Cell

Performance in these areas gets measured through responses given to specific questions (factors) in the questionnaire (Alumni Feedback Survey). In 2022-23, responses could be elicited from 41 alumni of School of Pharmaceutical Sciences.

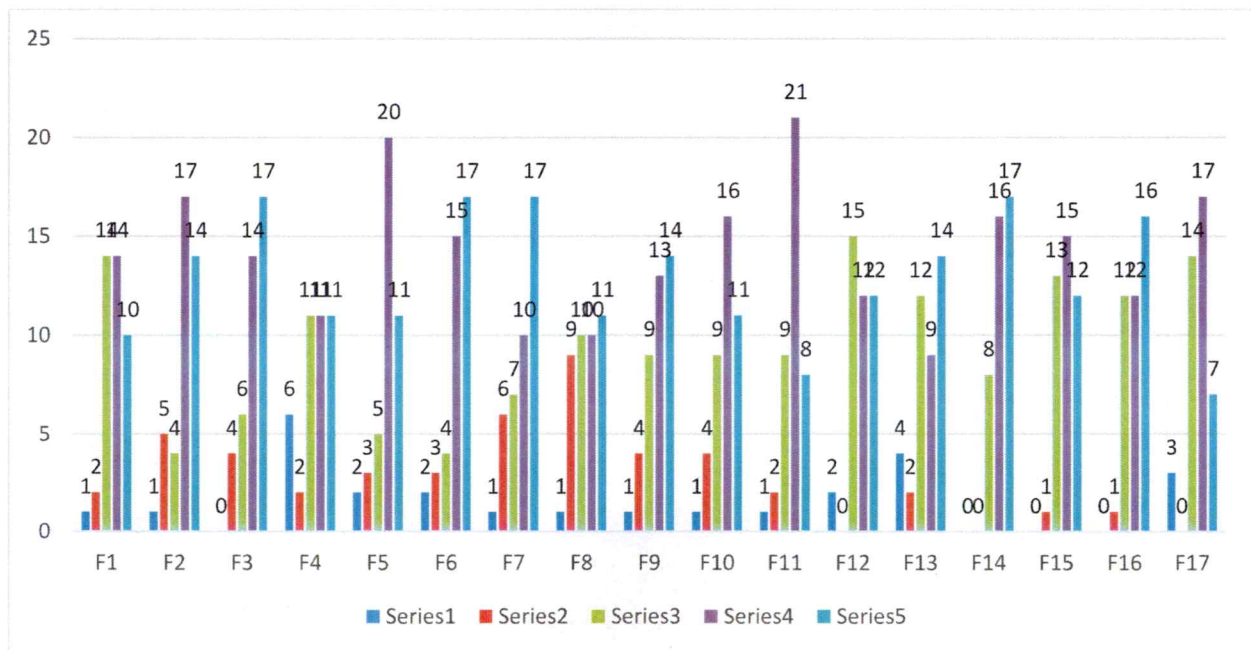
#### **University Facilities & Overall Infrastructure:**

To evaluate the performance on this parameter, questions were asked in reference to 17 factors viz.

1. F1: Admission Procedure
2. F2: Fee structure
3. F3: Environment
4. F4: Infrastructure & Lab facilities
5. F5: Faculty
6. F6: Project Guidance
7. F7: Quality of support material
8. F8: Training & Placement
9. F9: Library
10. F10: Canteen Facilities
11. F11: Hostel Facilities
12. F12: Overall Rating of the University
13. F13: Alumni Association/Network of Old Friends
14. F14: Caliber of students passing out of this University
15. F15: Professional courses and their suitability to the Industry
16. F16: Learning experience in terms of their relevance to the real life application
17. F17: Significance of the course(s) that you learnt in relation to your current job

20% respondents were found dissatisfied with the infrastructure and lab facilities at the department. 24% of the respondents voiced their dissatisfaction with the Training and Placement Cell.

	Poor	Average	Good	Very Good	Excellent	Total Responses	Satisfied Percentage	Not Satisfied Percentage
F1	1	2	14	14	10	41	93	7
F2	1	5	4	17	14	41	85	15
F3	0	4	6	14	17	41	90	10
F4	6	2	11	11	11	41	80	20
F5	2	3	5	20	11	41	88	12
F6	2	3	4	15	17	41	88	12
F7	1	6	7	10	17	41	83	17
F8	1	9	10	10	11	41	76	24
F9	1	4	9	13	14	41	88	12
F10	1	4	9	16	11	41	88	12
F11	1	2	9	21	8	41	93	7
F12	2	0	15	12	12	41	95	5
F13	4	2	12	9	14	41	85	15
F14	0	0	8	16	17	41	100	0
F15	0	1	13	15	12	41	98	2
F16	0	1	12	12	16	41	98	2
F17	3	0	14	17	7	41	93	7



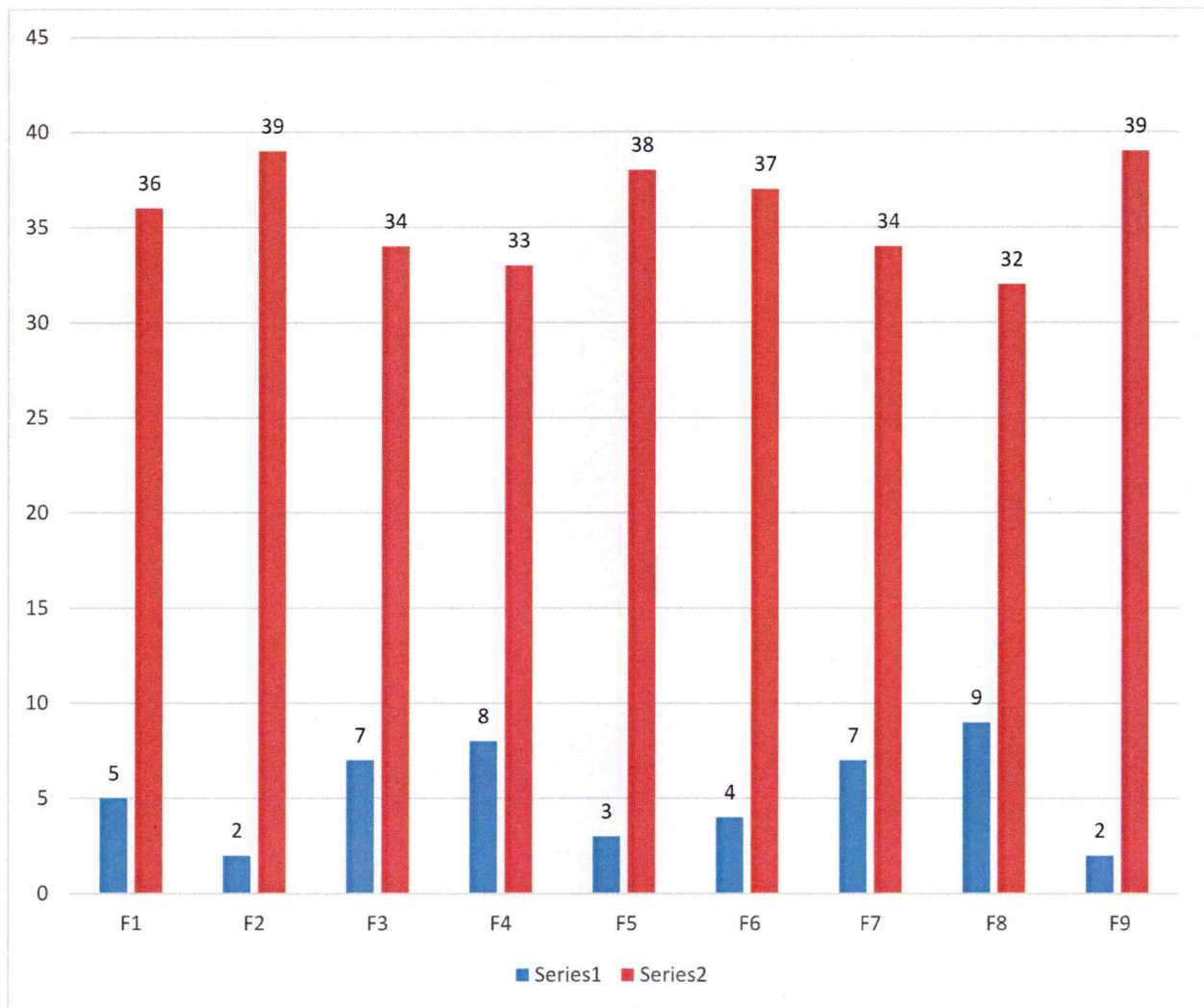
### Grievances, Facilities & Academic Initiatives:

Responses were also sought to capture the opinion of alumni about the different aspects of the University including handling of grievances, adequacy of various facilities and academic initiatives being taken by the University. The factors / questions are as follows:

1. F1: Do you feel proud to be associated with IFTM University as an Alumnus?
2. F2: Would you like to join the Department/School Alumni Association?
3. F3: Have you participated in any Alumni meet as of now (organized by your parent department)?
4. F4: Are you willing to contribute to the development of the Department/School?
5. F5: Were your grievances properly handled at the Department/School/University? [As a student]
6. F6: Were your grievances properly handled at the Department/School/University? [As an Alumnus]
7. F7: Have you obtained sufficient know-how (both in theory and practice) at IFTMU?
8. F8: Is the education imparted at IFTMU useful and relevant in your present job?
9. F9: Were the Head of the Department & Teachers cooperative?

	No	Yes	Grand Total	Agreed Percentage	Disagreed Percentage
F1	5	36	41	88	12
F2	2	39	41	95	5
F3	7	34	41	83	17
F4	8	33	41	80	20
F5	3	38	41	93	7
F6	4	37	41	90	10
F7	7	34	41	83	17
F8	9	32	41	78	22
F9	2	39	41	95	5

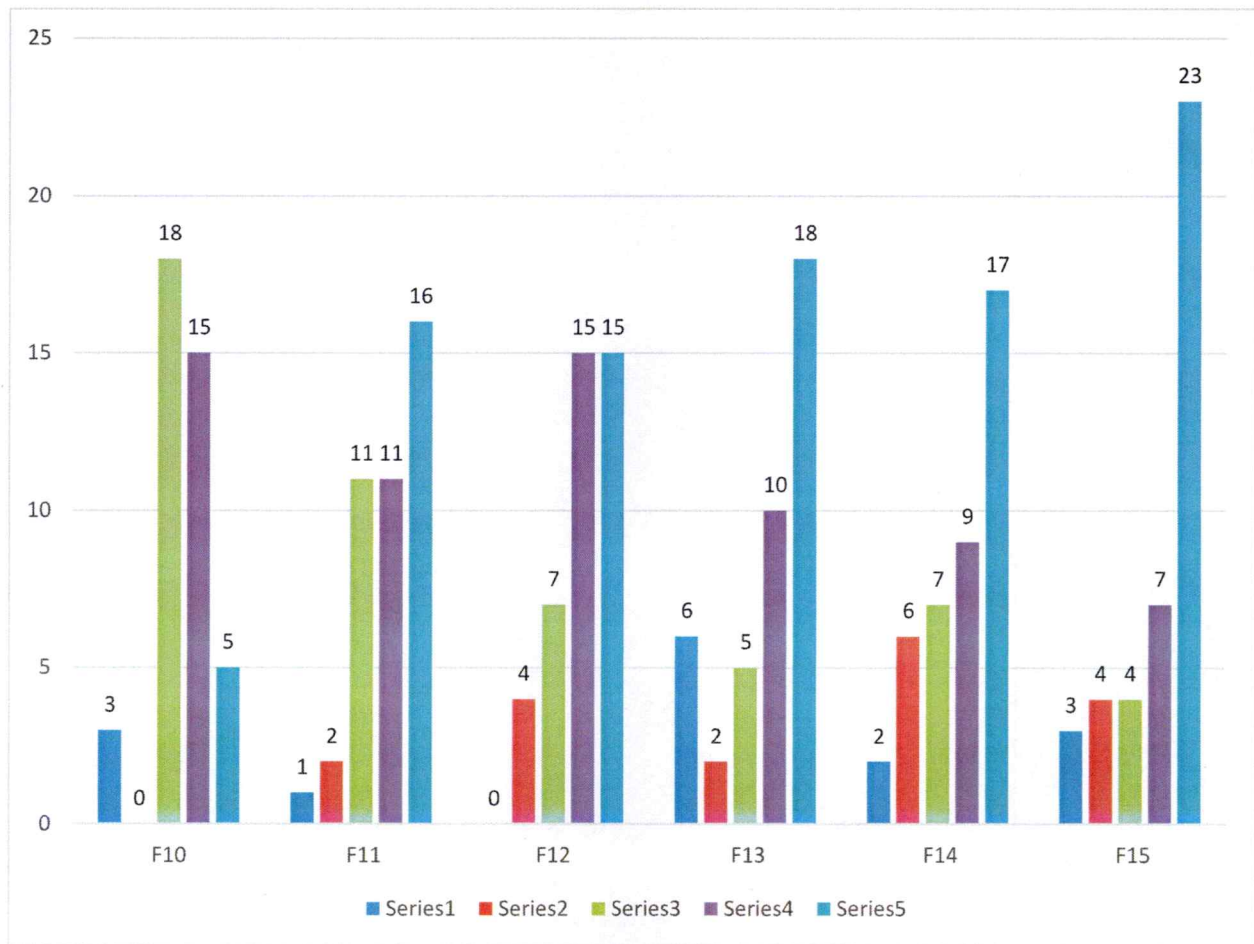
The survey revealed that 22% of the respondents did not consider their learning as useful and relevant to their jobs. 20% of the alumni respondents also feel that they do not want to contribute to the development of the department.





- 10. F10: Laboratories & Equipment's facilities
- 11. F11: Library/Seminar/Reading Room
- 12. F12: Computer Facilities
- 13. F13: Internet & Wi-Fi
- 14. F14: Sports and Cultural
- 15. F15: Classrooms

	Poor	Average	Good	Very Good	Excellent	Grand Total	Satisfied Percentage	Not Satisfied Percentage
F10	3	0	18	15	5	41	93	7
F11	1	2	11	11	16	41	93	7
F12	0	4	7	15	15	41	90	10
F13	6	2	5	10	18	41	80	20
F14	2	6	7	9	17	41	80	20
F15	3	4	4	7	23	41	83	17

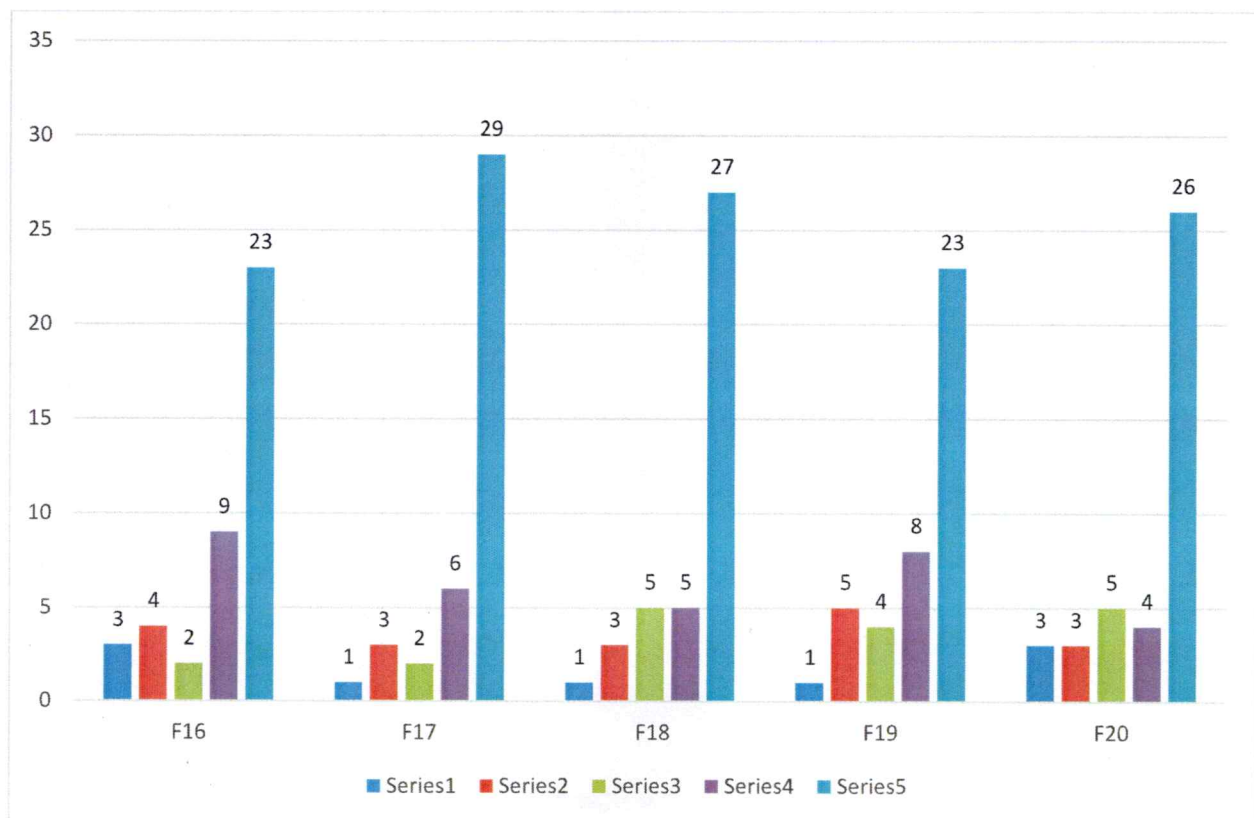


- 16. F16: Industry Oriented Projects (if applicable)
- 17. F17: Seminars & Workshop
- 18. F18: Guest Lectures
- 19. F19: Special Training Classes for bridging Industry/Academic gap
- 20. F20: Student Development Activities organized by the University

	Poor	Average	Good	Very Good	Excellent	Grand Total	Satisfied %	Not Satisfied %
F16	3	4	2	9	23	41	83	17
F17	1	3	2	6	29	41	90	10
F18	1	3	5	5	27	41	90	10
F19	1	5	4	8	23	41	85	15
F20	3	3	5	4	26	41	85	15

The University undertakes many academic initiatives for the holistic development of its students and the survey also included the questions to capture the opinion of the alumni in this regard.

However, 17% respondents opined that the industry oriented projects offered to them as students were not of appropriate quality / profile..



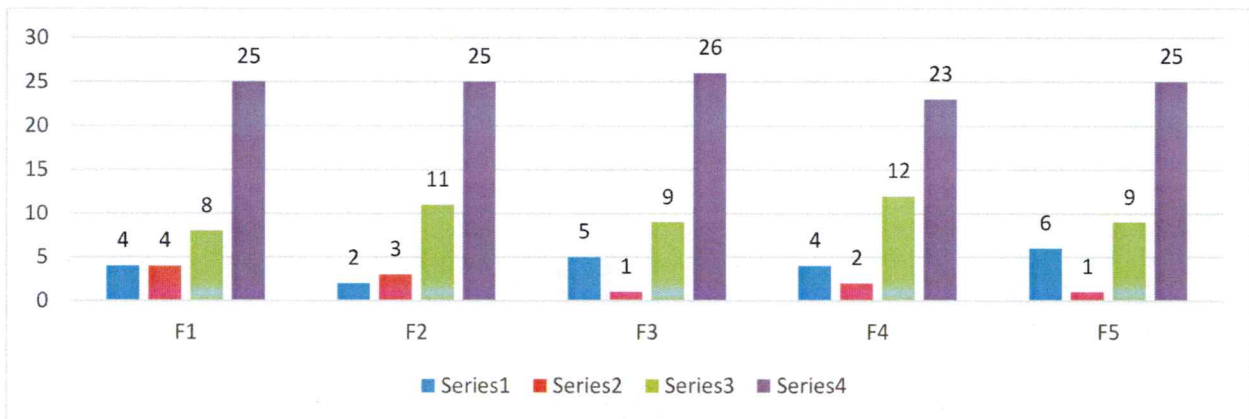
**Regarding Program Educational Objectives:**

To evaluate the performance on this parameter, questions were asked in reference to 5 factors viz.

1. F1: Preparation: To educate students for graduate and postgraduate programs and to help them succeed in their chosen/ related fields.
2. F2: Core Competence: To provide students with sound knowledge in their chosen area.
3. F3: Breadth: To train students with knowledge relating to an array of professional fields undertaken so as to comprehend, analyze, design, and create innovative products and find solutions to improve the quality of life
4. F4: Professionalism: To create professionally superior and ethically strong global manpower and to uphold moral values. With effective communication skills, teamwork skills, multidisciplinary approach, and an ability to improve the quality of life.
5. F5: Learning Environment: To create an intellectual environment for research and development aware of emerging technologies leading to continual learning needed for a successful professional career, to create a center of excellence develop technocrats and business leaders.

Majority of the students agreed that the educational program of the University has helped them succeed in their chosen field.

	Very Little	Quite a Bit	Some Extent	Very Much	Total Responses	Satisfied Percentage	Not Satisfied Percentage
F1	4	4	8	25	41	90	10
F2	2	3	11	25	41	95	5
F3	5	1	9	26	41	88	12
F4	4	2	12	23	41	90	10
F5	6	1	9	25	41	85	15

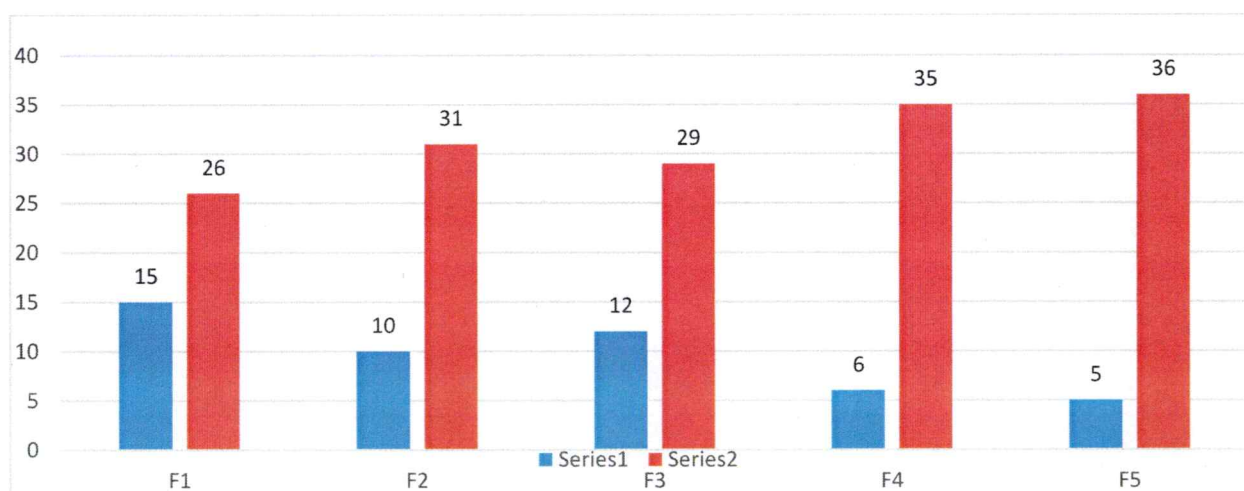


### Feedback about Training & Placement Cell:

1. F1: Has the Training & Placement (T&P) Cell provided ample on campus placement opportunities?
2. F2: Has the Placement Cell provided sufficient off campus placement opportunities?
3. F3: Did you ever avail Career counseling and guidance for higher studies from Placement Cell?
4. F4: If you are invited to deliver a Guest Lecture/a Special Talk/a Motivational Session for your juniors, will you be interested?
5. F5: Do you receive communications from the University/parent department through Mails/ Calls/SMS etc?

	No	Yes	Grand Total	Agreed Percentage	Disagreed Percentage
F1	15	26	41	63	37
F2	10	31	41	76	24
F3	12	29	41	71	29
F4	6	35	41	85	15
F5	5	36	41	88	12

The training and placement cell activities at the department need to improve.



\*\*\* LAST PAGE OF THE REPORT \*\*\*