



आईएफटीएम विश्वविद्यालय, मुरादाबाद, उत्तर प्रदेश
IFTM University, Moradabad, Uttar Pradesh
NAAC ACCREDITED

STUDENT FEEDBACK REPORT
SCHOOL OF SOCIAL SCIENCES
2022-23

SECTION – FACILITIES



RESEARCH METHODOLOGY

Data Type:	Primary
Data Collection Tool:	Survey (Online)
Sample Size:	169
Sample Frame:	Students of IFTM University studying in 2022-23 in School of Social Sciences
Sampling:	Probability
Questionnaire:	5-point Likert scale (with 5 being most satisfied and 1 being least satisfied)



In its pursuit of excellence, IQAC at IFTM University conducts a student survey every year; to learn about any scope of improvement in its functioning.

The student responses are sought in the following 5 areas viz.

1. Library
2. Institutional Facilities
3. Examination & Evaluation
4. Placement Cell
5. Student Support

Performance in these areas gets measured through responses given to specific questions (factors) in the questionnaire (Student Survey). In 2022-23, 1984 students participated in the survey. Of all the responses 169 were from School of Social Sciences. The findings of the survey on the above mentioned 5 areas are presented in the following section.



LIBRARY

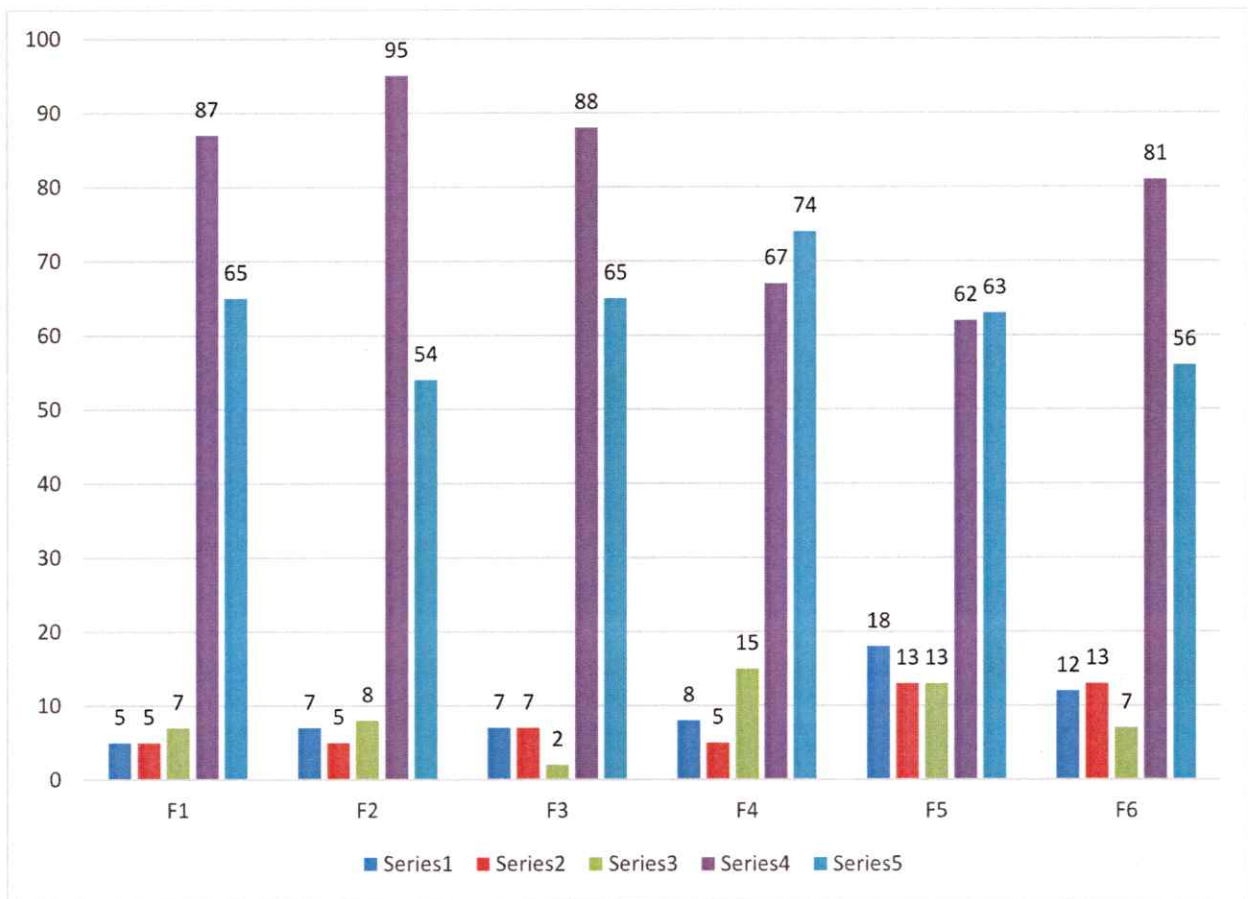
Library is the epicenter of knowledge in any academic institute. It provides its users place to brain storm and learn. The effectiveness of library facility was measured through the following factors.

1. F1: The prescribed books/reading materials are available in the library.
2. F2: Reading room and common room are available in the faculty/college building
3. F3: Available reading space in library is satisfactory
4. F4: The library staff are cooperative and helpful
5. F5: Photocopying facility in the library/Department is available and satisfactory
6. F6: Online educational resources are available and accessible

18% respondents felt that reprography services in library need improvement. The survey also revealed that 15% of the respondents faced some issues in assessing the online educational resources available in the library.

LIBRARY							
Ratings	F1	F2	F3	F4	F5	F6	Cumulative Rating
1	5	7	7	8	18	12	4
2	5	5	7	5	13	13	
3	7	8	2	15	13	7	
4	87	95	88	67	62	81	
5	65	54	65	74	63	56	
Average Rating	4	4	4	4	4	4	
No. of Participants in the survey	169	169	169	169	169	169	
% of students satisfied	94	93	92	92	82	85	
% of students dissatisfied	6	7	8	8	18	15	





INSTITUTIONAL FACILITIES

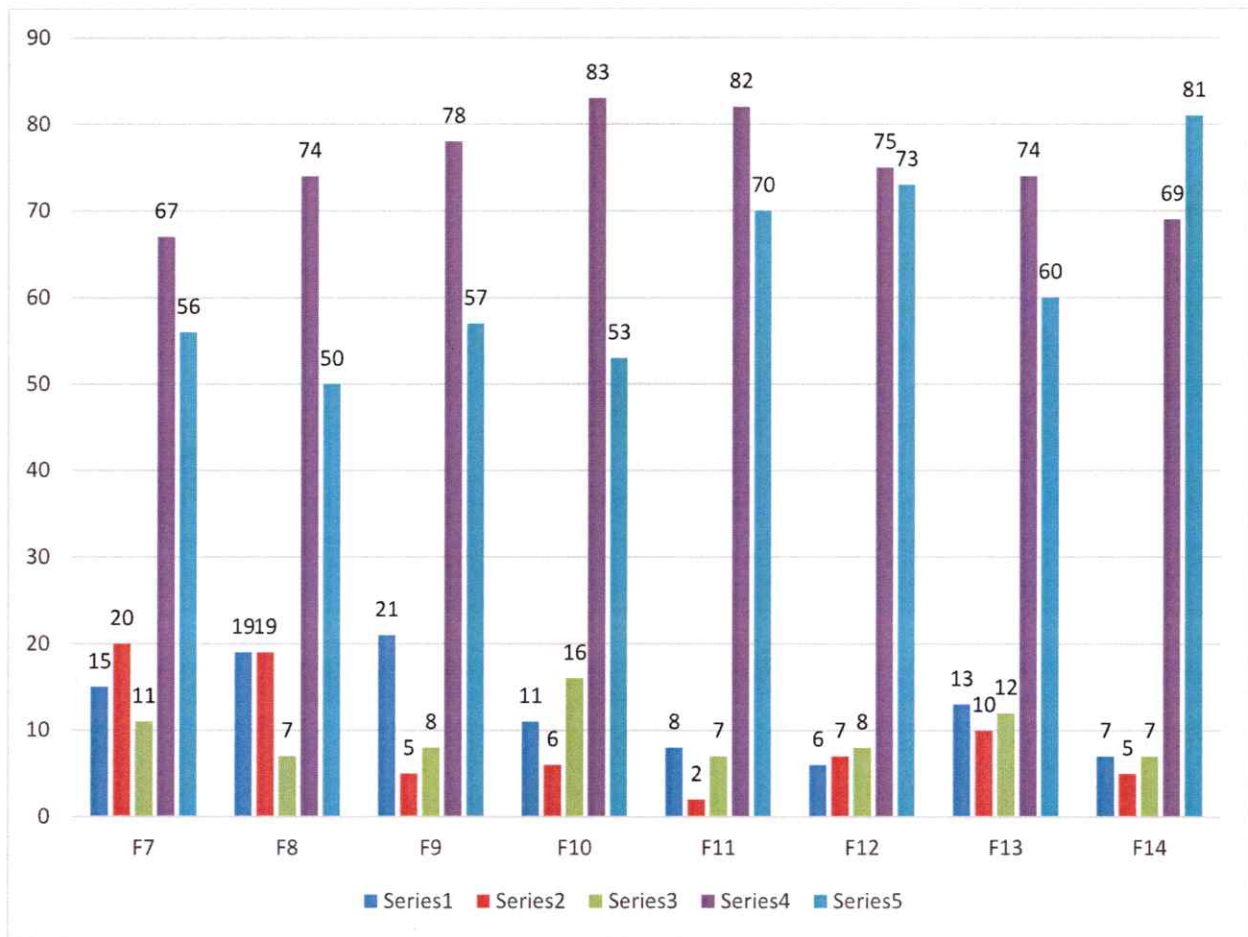
The institutional facilities provide students an environment conducive to learning and help them realize their true potential. The performance on this parameter was measured through various factors viz.

1. F7: Internet facilities are available in the department
2. F8: Toilets/washrooms are hygienic and properly maintained.
3. F9: Clean drinking water is available in the department and on the campus
4. F10: Equipment in the lab(s) is in working condition.
5. F11: The campus is green and Eco friendly
6. F12: The buildings/classrooms are accessible to differently abled persons.
7. F13: The classrooms are clean and well maintained
8. F14: The campus has adequate power supply.

Out of 169 respondents, 94% agreed that the environment at IFTM is ecofriendly and green. 93% respondents also agreed that the university campus has adequate power supply. However, 21% of the respondents viewed internet connectivity at their respective departments as not satisfactory. 22% of the respondents also felt that more cleanliness and hygiene is required to be maintained in the wash rooms.

INSTITUTIONAL FACILITIES									
Ratings	F7	F8	F9	F10	F11	F12	F13	F14	Cumulative Rating
1	15	19	21	11	8	6	13	7	4
2	20	19	5	6	2	7	10	5	
3	11	7	8	16	7	8	12	7	
4	67	74	78	83	82	75	74	69	
5	56	50	57	53	70	73	60	81	
Average Rating	4	4	4	4	4	4	4	4	
No. of Participants in the survey	169	169	169	169	169	169	169	169	
% of students satisfied	79	78	85	90	94	92	86	93	
% of students dissatisfied	21	22	15	10	6	8	14	7	





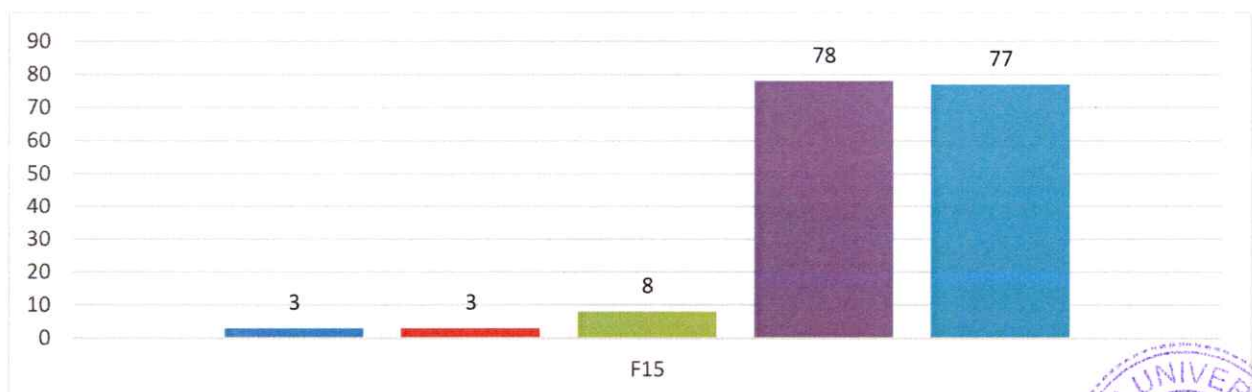
EXAMINATION & EVALUATION

Examination and its evaluation were measured with the help of following factor.

1. F15: Results and attendance records are displayed on time

96% of the respondents agreed that the results and attendance records are displayed on time. The average rating for this factor was 4.

EXAMINATION & EVALUATION		
Ratings	F15	Cumulative Rating
1	3	4
2	3	
3	8	
4	78	
5	77	
Average Rating	4	
No. of Participants in the survey	169	
% of students satisfied	96	
% of students dissatisfied	4	

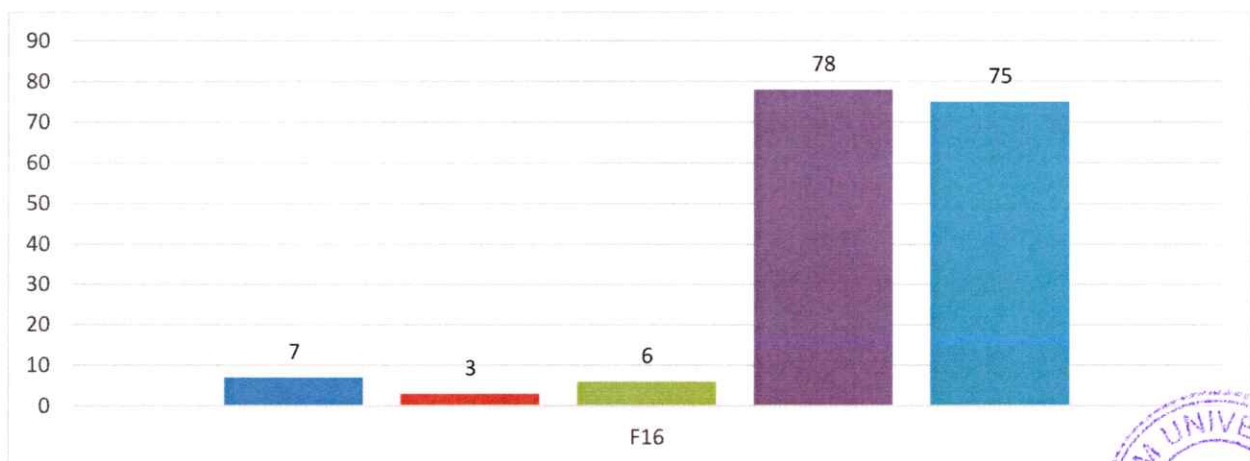


PLACEMENT CELL

The performance of placement cell and its functioning was found satisfactory by 94% of the respondents. The average rating being given to the university on this parameter was 4. Student's perception and experience with the placement cell was sought.

1. F16: The functioning of the placement cell(s) in the university/department is satisfactory.

PLACEMENT CELL		
Ratings	F16	Cumulative Rating
1	7	4
2	3	
3	6	
4	78	
5	75	
Average Rating	4	
No. of Participants in the survey	169	
% of students satisfied	94	
% of students dissatisfied	6	



STUDENT SUPPORT

Though university aims to facilitate its students proactively, it may happen that students have some grievances and suggestions. To get their concerns addressed, they may require meeting functionaries across departments.

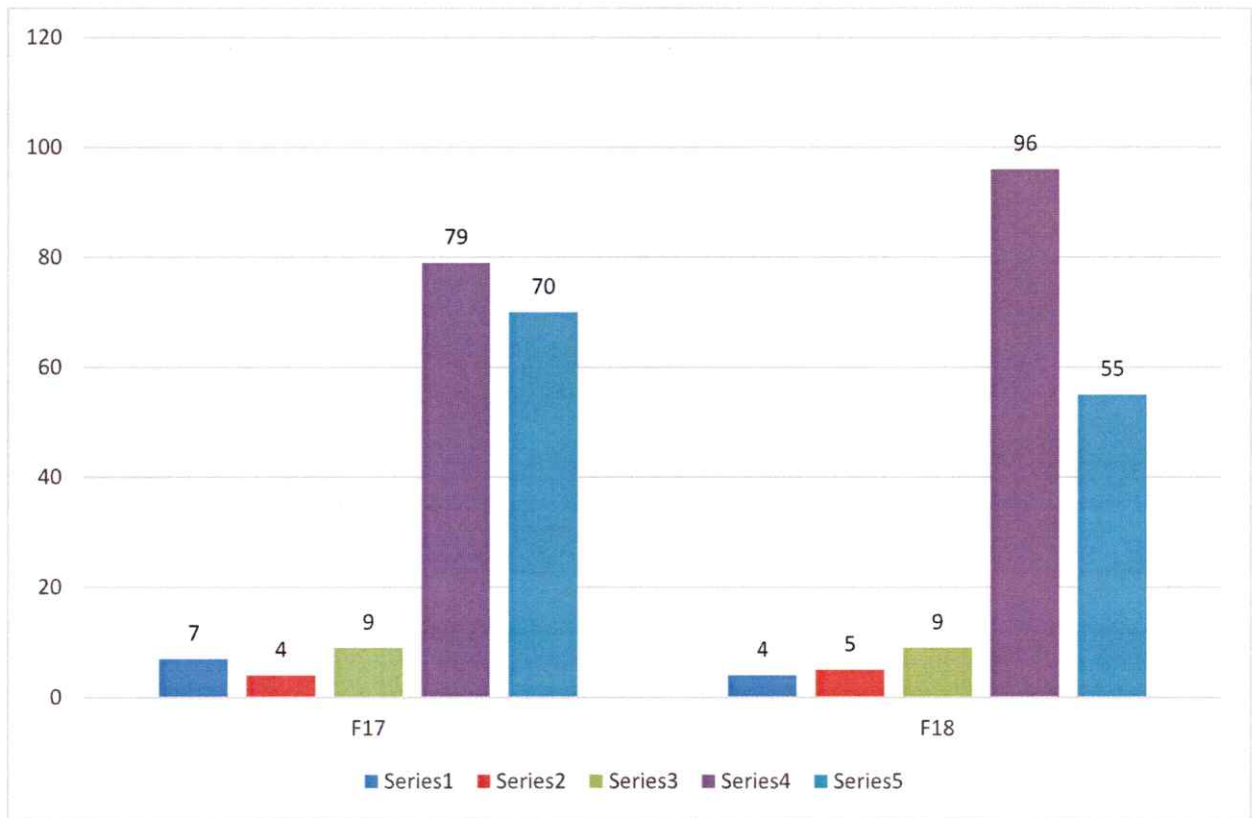
To measure performance in this area, responses were sought on the following factors –

1. F17: The office staff in the department is helpful.
2. F18: Grievances/problems are redressed/ solved well in time.

93% of the respondents found their interaction with office staff as helpful. Almost the same percentage of respondents shared their satisfaction with the grievance redressal mechanism available at the department.

STUDENT SUPPORT			
Ratings	F17	F18	Cumulative Rating
1	7	4	4
2	4	5	
3	9	9	
4	79	96	
5	70	55	
Average Rating	4	4	
No. of Participants in the survey	169	169	
% of students satisfied	93	95	
% of students dissatisfied	7	5	





SECTION – TEACHING & EVALUATION



RESEARCH METHODOLOGY

Data Type:	Primary
Data Collection Tool:	Survey (Online)
Sample Size:	195
Sample Frame:	Students of IFTM University studying in 2022-23 in School of Social Sciences
Sampling:	Probability
Questionnaire:	5-point Likert scale (with 5 being most satisfied and 1 being least satisfied)



Teaching and evaluation of students are at the core of any academic institute. It helps in bringing the desired change in the students and helps them contribute in making society a better place. To learn about the performance in these two areas, a questionnaire was prepared and administered through a survey.

TEACHING

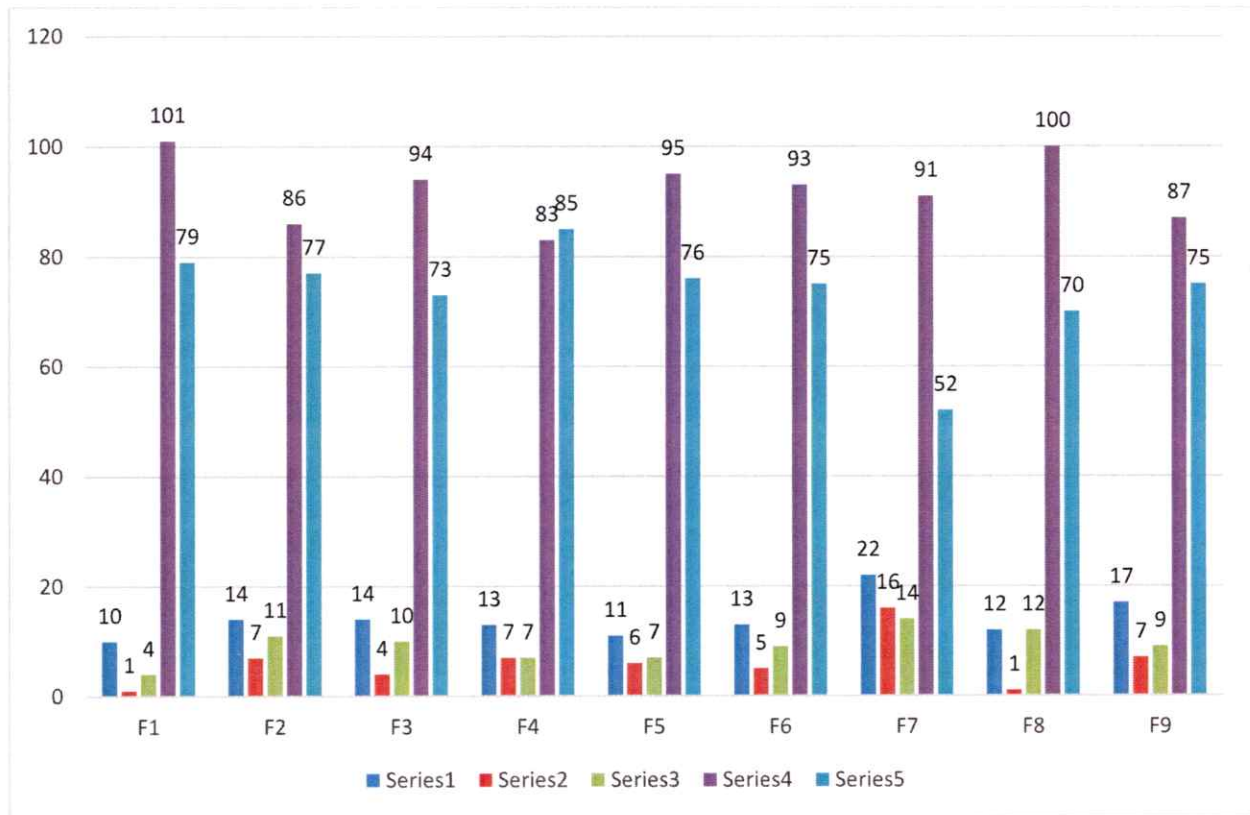
Performance on teaching was evaluated through following 9 factors –

1. F1: The teacher is punctual in the class.
2. F2: The teacher comes well prepared for the lecture
3. F3: The teacher communicates clearly and inspires me by his/ her teaching.
4. F4: The teacher completes the entire syllabus in time.
5. F5: The teacher discusses topics and interacts in the class
6. F6: The teacher encourages for participation and discussion in class.
7. F7: The teacher uses modern teaching aids, handouts, suitable references, power-point presentations (PPT), web-resources, etc.
8. F8: The teacher's attitude towards the students is friendly & helpful.
9. F9: The teacher is available and accessible in Department.

TEACHING										
Ratings	F1	F2	F3	F4	F5	F6	F7	F8	F9	Average Rating
1	10	14	14	13	11	13	22	12	17	4
2	1	7	4	7	6	5	16	1	7	
3	4	11	10	7	7	9	14	12	9	
4	101	86	94	83	95	93	91	100	87	
5	79	77	73	85	76	75	52	70	75	
Average Rating	4	4	4	4	4	4	4	4	4	
No. of Participants in the survey	195	195	195	195	195	195	195	195	195	
% of students satisfied	94	89	91	90	91	91	81	93	88	
% of students dissatisfied	6	11	9	10	9	9	19	7	12	



19% students felt that modern teaching aids including AV systems are required and will enhance their class room experience and learning process. 12% respondents opined that they faced problems in catching up with the teacher and their availability was at times a concern.



EVALUATION

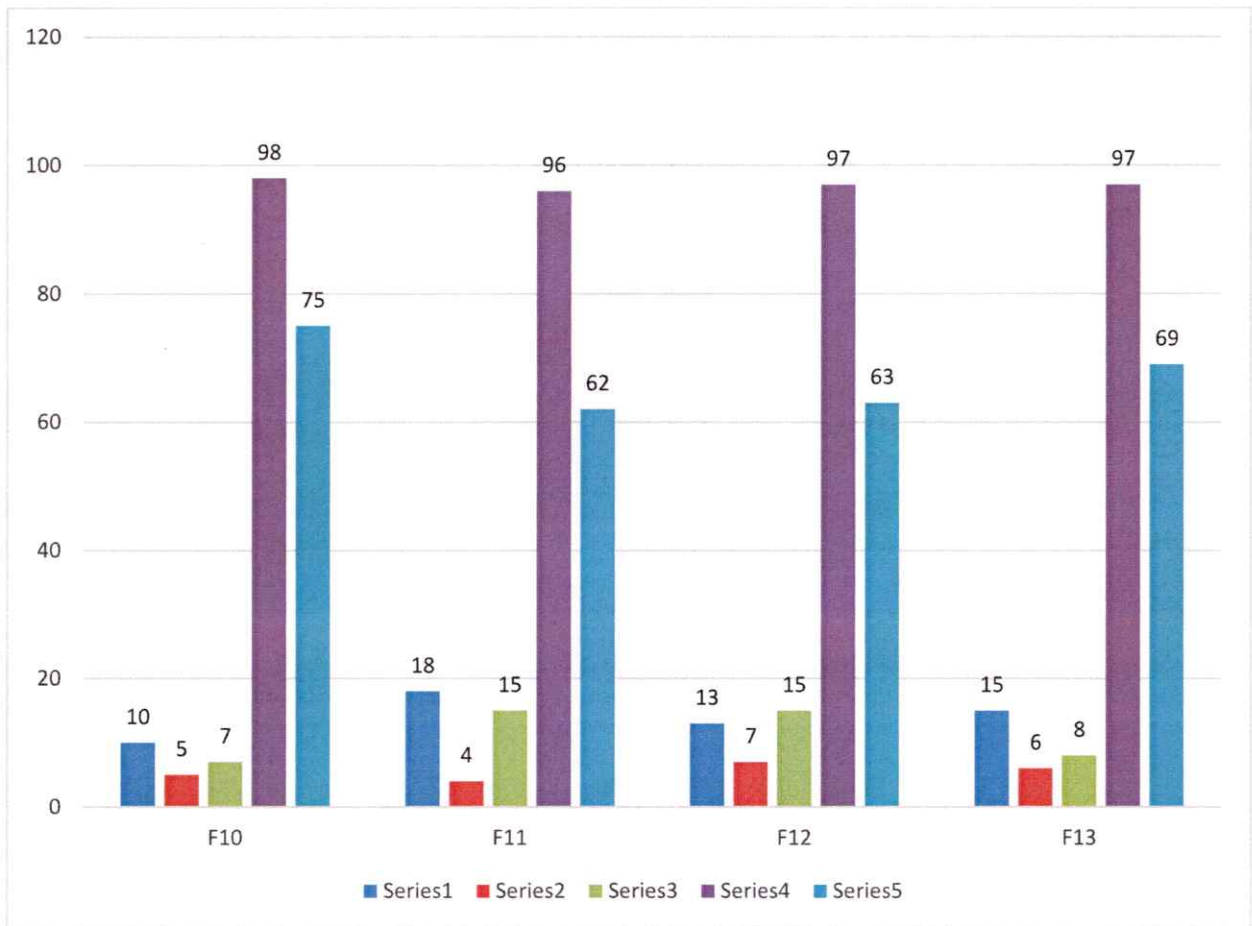
Performance of the “evaluation” criteria is based on 4 factors viz.

1. F10: The evaluation process is fair and unbiased.
2. F11: Regular and timely feedback is given on our (students’) performance.
3. F12: Periodical assessments are conducted as per schedule.
4. F13: I have learnt and understood the subject material/s in this course.

EVALUATION					
Ratings	F10	F11	F12	F13	Average Rating
1	10	18	13	15	4
2	5	4	7	6	
3	7	15	15	8	
4	98	96	97	97	
5	75	62	63	69	
Average Rating	4	4	4	4	
No. of Participants in the survey	195	195	195	195	
% of students satisfied	92	89	90	89	
% of students dissatisfied	8	11	10	11	

About 90% of the students were satisfied with the process and performance of evaluation exercise in the university.





SECTION – CURRICULUM



RESEARCH METHODOLOGY

Data Type:	Primary
Data Collection Tool:	Survey (Online)
Sample Size:	137
Sample Frame:	Students of IFTM University studying in 2022-23 in School of Social Sciences
Sampling:	Probability Sampling
Questionnaire:	5-point Likert scale (with 5 being most satisfied and 1 being least satisfied)



Curriculum adopted by a university provides not only a structure for teaching; instead it's a measurable plan. It helps quantify the efforts being put by the students along with the other participants of the ecosystem. Its acceptance with all the stake holders is a pre requisite to the ultimate purpose, it tries to achieve.

To bridge any gap between the expectations and the perception about the curriculum, an annual survey is conducted by the university. The questionnaire captures responses on 3 themes viz. acceptance amongst students, perceived relevance and support material. The factors are as follows:

- a. *Acceptance of curriculum amongst students*
- b. *Perceived relevance of the curriculum*
- c. *Support Material for subjects (curriculum)*

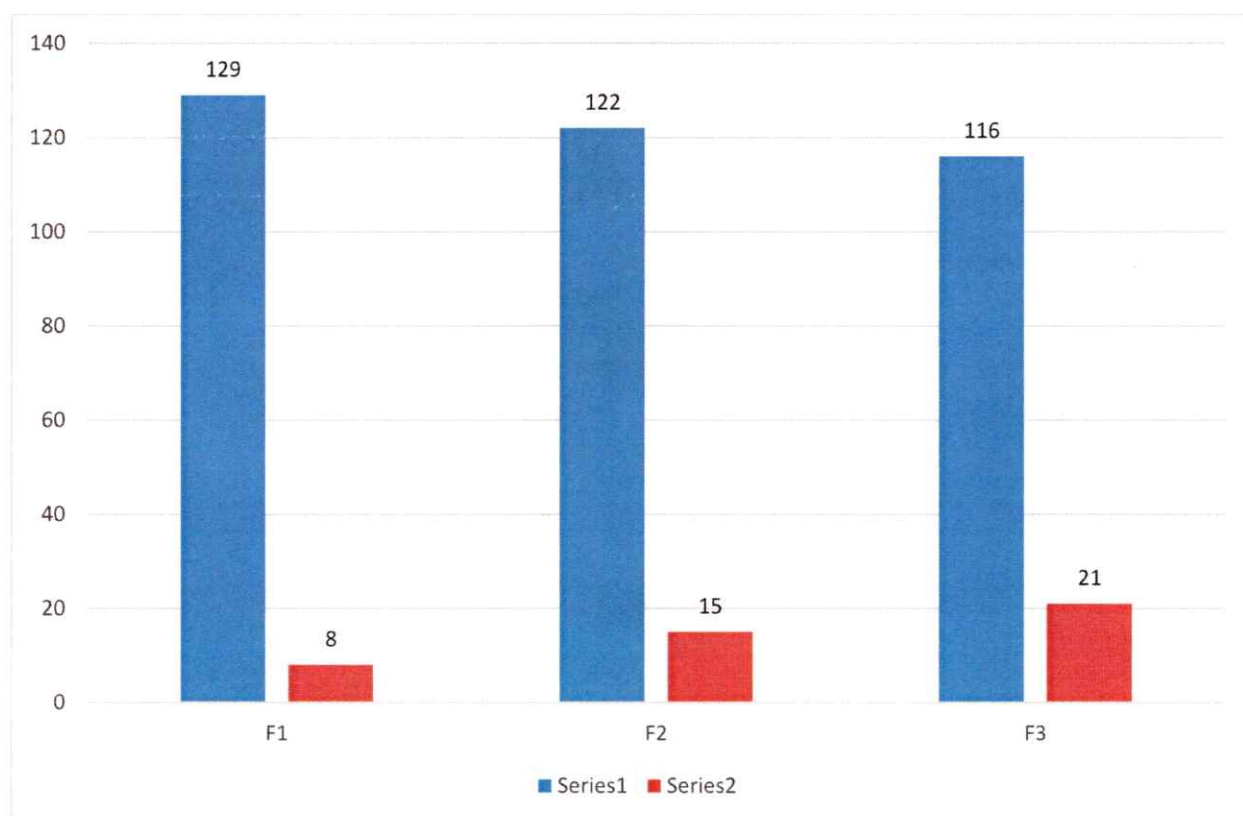


ACCEPTANCE OF CURRICULUM AMONGST STUDENTS –

1. F1: I found the curriculum easy and interesting
2. F2: The instructions given in the curriculum is easy to follow
3. F3: The syllabus has good balance between theory and practical exercises

	ACCEPTANCE		
	F1	F2	F3
Yes	129	122	116
No	8	15	21
Total Responses	137	137	137
Yes %	94	89	85
No %	6	11	15

94% of the respondents found the curriculum easy, which indicates that the curriculum is designed well according to the aptitude level of the students at large. However, 15% of the students felt the need for some adjustment between theory and practical activities.



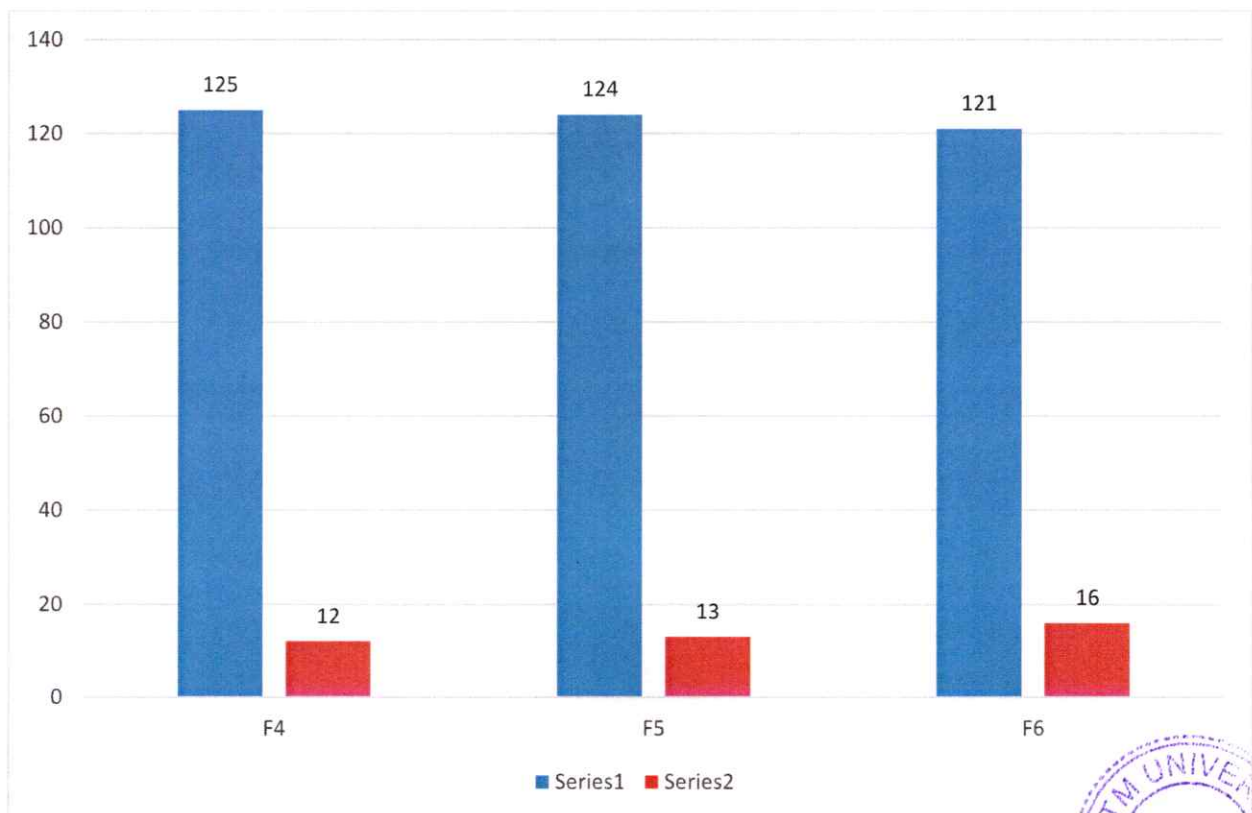
PERCEIVED RELEVANCE OF THE CURRICULUM –

- 4. F4: The subjects are relevant to my future job aspirations
- 5. F5: The subjects are very practical and seems applicable in daily life
- 6. F6: The course has helped me develop my personality

		PERCEIVED RELEVANCE		
		F4	F5	F6
Yes		125	124	121
No		12	13	16
Total Responses		137	137	137
Yes %		91	91	88
No %		9	9	12

91% respondents found the subjects practical and having application in real life. 91% of the students found the subjects relevant according to their future job aspirations. However, 12% of the respondents felt the need for personality development classes in their course.

While responses reflect the acceptance, usefulness and contemporary nature of the curriculum at the university; it also highlights the areas for further improvement.

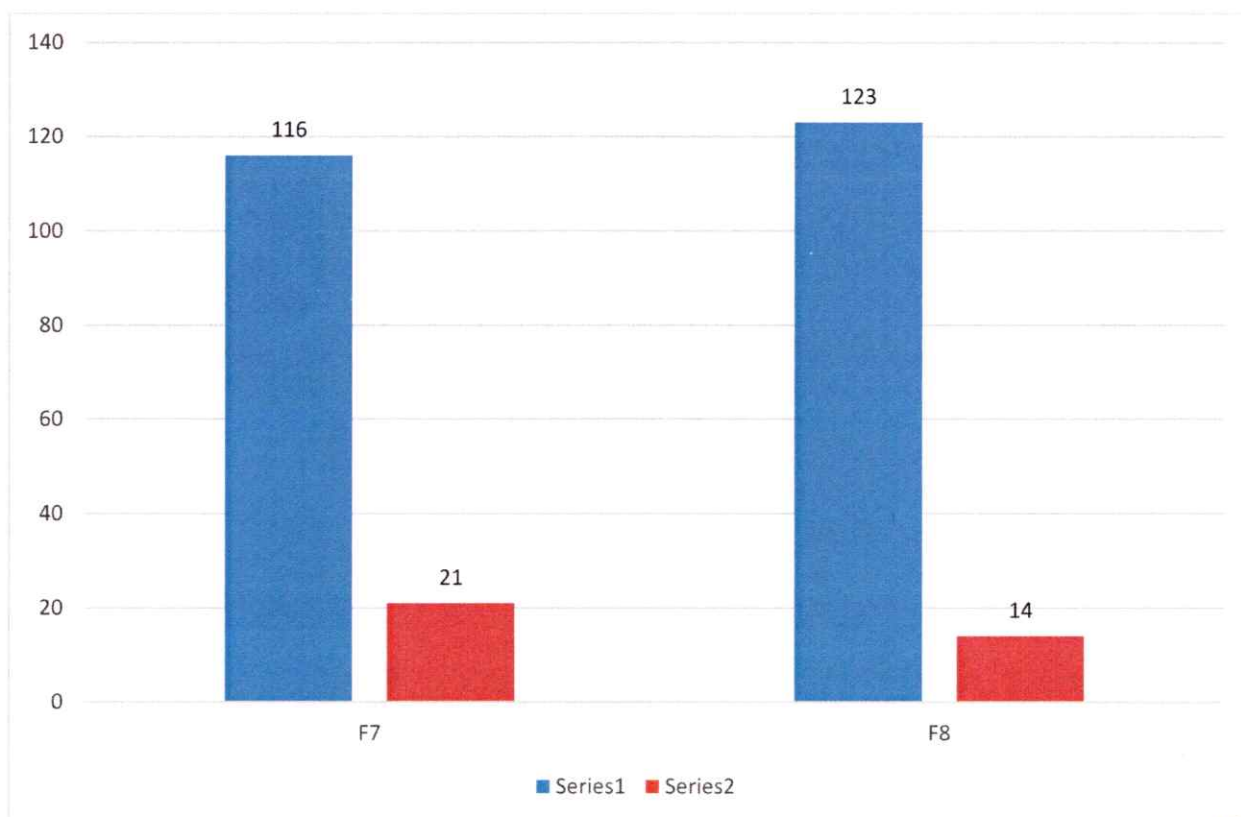


SUPPORT MATERIAL FOR SUBJECTS (CURRICULUM) –

- 7. F7: The reading material and references of the subject are easily available
- 8. F8: Course content is followed by corresponding reference materials?
- 9. F9: What other changes would you like to suggest improving the curriculum / course?

	SUPPORT MATERIAL	
	F7	F8
Yes	116	123
No	21	14
Total Responses	137	137
Yes %	85	90
No %	15	10

While, 90% of the respondents opined that they were provided with the reference material, 15% of the students shared that they faces difficulty in sourcing the required reading material and references.



***** LAST PAGE OF THE REPORT *****